

# Anti-MRPL41 antibody ab121821

**1 References**   **3 图像**

### 概述

产品名称	Anti-MRPL41抗体
描述	兔多克隆抗体to MRPL41
宿主	Rabbit
经测试应用	适用于: IHC-P, WB, ICC/IF
种属反应性	与反应: Human
免疫原	antigen sequence: KPYVSYLAPE SEETPLTAAQ LFSEAVAPAI EKDFKDGTFD PDNLEKYGFE PTQEGKLFQL YPRNFLR, corresponding to amino acids 71-137 of Human MRPL41. <a href="#">Run BLAST with</a> <a href="#">Expasy</a> <a href="#">Run BLAST with</a> <a href="#">NCBI</a>
阳性对照	Human rectum tissue; RT-4 and U-251 MG cell lysates; U-251MG cells
常规说明	<p>The Life Science industry has been in the grips of a reproducibility crisis for a number of years. Abcam is leading the way in addressing this with our range of recombinant monoclonal antibodies and knockout edited cell lines for gold-standard validation. Please check that this product meets your needs before purchasing.</p> <p>If you have any questions, special requirements or concerns, please send us an inquiry and/or contact our Support team ahead of purchase. Recommended alternatives for this product can be found below, along with publications, customer reviews and Q&amp;As</p>

### 性能

形式	Liquid
存放说明	Shipped at 4°C. Upon delivery aliquot and store at -20°C. Avoid freeze / thaw cycles.
存储溶液	pH: 7.20 Preservative: 0.02% Sodium azide Constituents: 59% PBS, 40% Glycerol (glycerin, glycerine)
纯度	Immunogen affinity purified
克隆	多克隆
同种型	IgG

### 应用

The Abpromise guarantee

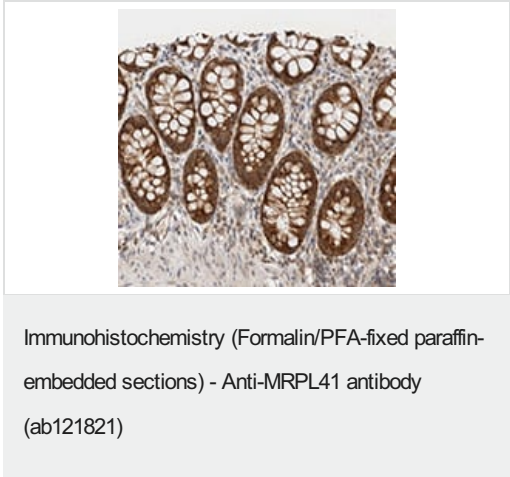
Abpromise™承诺保证使用ab121821于以下的经测试应用

“应用说明”部分 下显示的仅为推荐的起始稀释度;实际最佳的稀释度/浓度应由使用者检定。

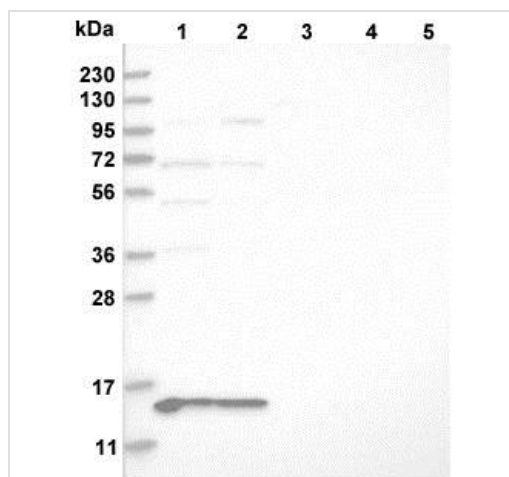
应用	Ab评论	说明
IHC-P		1/200 - 1/500. Perform heat mediated antigen retrieval with citrate buffer pH 6 before commencing with IHC staining protocol.
WB		Use a concentration of 0.04 - 0.4 µg/ml.
ICC/IF		Use a concentration of 0.25 - 2 µg/ml.

靶标	
功能	Component of the mitochondrial ribosome large subunit. Also involved in apoptosis and cell cycle. Enhances p53/TP53 stability, thereby contributing to p53/TP53-induced apoptosis in response to growth-inhibitory condition. Enhances p53/TP53 translocation to the mitochondria. Has the ability to arrest the cell cycle at the G1 phase, possibly by stabilizing the CDKN1A and CDKN1B (p27Kip1) proteins.
组织特异性	Present in kidney, liver, thymus and testis, and at lower level in brain and spleen (at protein level).
序列相似性	Belongs to the ribosomal protein L41 family.
细胞定位	Mitochondrion.

图片



ab121821, at 1/300 dilution, staining MRPL41 in paraffin-embedded Human rectum tissue by Immunohistochemistry.



Western blot - Anti-MRPL41 antibody (ab121821)

**All lanes :** Anti-MRPL41 antibody (ab121821) at 1/250 dilution

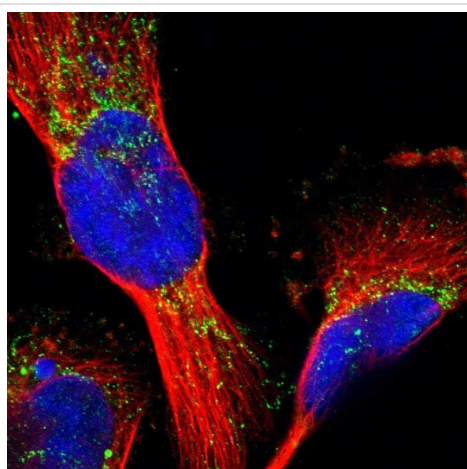
**Lane 1 :** RT-4 cell lysate

**Lane 2 :** U-251 MG cell lysate

**Lane 3 :** Human Plasma lysate

**Lane 4 :** Human Liver lysate

**Lane 5 :** Human Tonsil lysate



Immunocytochemistry/ Immunofluorescence - Anti-MRPL41 antibody (ab121821)

ab121821, at 4µg/ml, staining MRPL41 in U-251MG cells by Immunofluorescence. Antibody staining is shown in green.

**Please note:** All products are "FOR RESEARCH USE ONLY. NOT FOR USE IN DIAGNOSTIC PROCEDURES"

### Our Abpromise to you: Quality guaranteed and expert technical support

- Replacement or refund for products not performing as stated on the datasheet
- Valid for 12 months from date of delivery
- Response to your inquiry within 24 hours

- We provide support in Chinese, English, French, German, Japanese and Spanish
- Extensive multi-media technical resources to help you
- We investigate all quality concerns to ensure our products perform to the highest standards

If the product does not perform as described on this datasheet, we will offer a refund or replacement. For full details of the Abpromise, please visit <https://www.abcam.cn/abpromise> or contact our technical team.

#### **Terms and conditions**

---

- Guarantee only valid for products bought direct from Abcam or one of our authorized distributors