

Anti-MRP2 antibody [M2III-5] ab15603

敲除 验证

[13 References](#) [1 图像](#)

概述

| | |
|--------------|---|
| 产品名称 | Anti-MRP2抗体[M2III-5] |
| 描述 | 小鼠单克隆抗体[M2III-5] to MRP2 |
| 宿主 | Mouse |
| 特异性 | This antibody does not cross-react with the human MDR1 P-gp, MRP1, MRP3, or MRP5 gene products. |
| 经测试应用 | 适用于: WB |
| 种属反应性 | 与反应: Human 不与反应: Mouse |
| 免疫原 | This antibody was raised against a fusion protein of the bacterial maltose binding protein and rat MRP2, containing the 202-amino acid C terminal end of the transporter protein. |
| 表位 | ab15603 reacts with an internal epitope of MRP2; a 190-200 kD transmembrane protein earlier known as the canalicular multi-organic anion transporter cMOAT, absent in patients with the Dubin-Johnson syndrome. |
| 常规说明 | <p>The Life Science industry has been in the grips of a reproducibility crisis for a number of years. Abcam is leading the way in addressing this with our range of recombinant monoclonal antibodies and knockout edited cell lines for gold-standard validation. Please check that this product meets your needs before purchasing.</p> <p>If you have any questions, special requirements or concerns, please send us an inquiry and/or contact our Support team ahead of purchase. Recommended alternatives for this product can be found below, along with publications, customer reviews and Q&As</p> |

性能

| | |
|-------------|--|
| 形式 | Liquid |
| 存放说明 | Shipped at 4°C. Store at +4°C short term (1-2 weeks). Upon delivery aliquot. Store at -20°C or -80°C. Avoid freeze / thaw cycle. |
| 存储溶液 | pH: 7.3 Preservative: 0.1% Sodium azide Constituents: Tissue culture supernatant, 0.7% BSA |
| 纯度 | Tissue culture supernatant |

| | |
|------|---------|
| 克隆 | 单克隆 |
| 克隆编号 | M2III-5 |
| 同种型 | IgG2b |

应用

The Abpromise guarantee **Abpromise™**承诺保证使用ab15603于以下的经测试应用

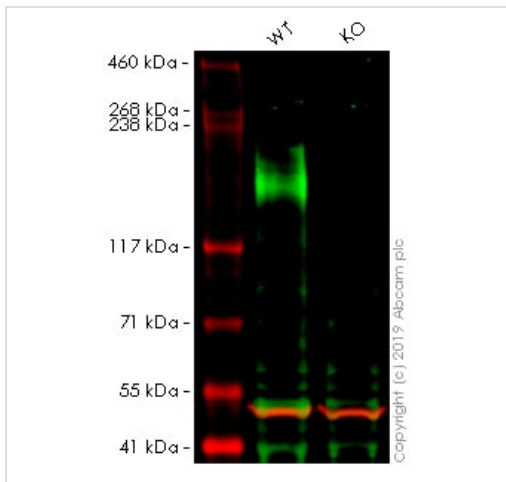
“应用说明”部分 下显示的仅为推荐的起始稀释度;实际最佳的稀释度/浓度应由使用者检定。

| 应用 | Ab评论 | 说明 |
|----|------|---|
| WB | | 1/20 - 1/50. Predicted molecular weight: 185.4 kDa. |

靶标

| | |
|--------------|--|
| 功能 | Mediates hepatobiliary excretion of numerous organic anions. May function as a cellular cisplatin transporter. |
| 组织特异性 | Found on the apical membrane of polarized cells in liver, kidney and intestine. The highest expression is found in liver. |
| 疾病相关 | Defects in ABCC2 are the cause of Dubin-Johnson syndrome (DJS) [MIM:237500]. DJS is an autosomal recessive disorder characterized by conjugated hyperbilirubinemia, an increase in the urinary excretion of coproporphyrin isomer I, deposition of melanin-like pigment in hepatocytes, and prolonged retention of sulfobromophthalein, but otherwise normal liver function. |
| 序列相似性 | Belongs to the ABC transporter superfamily. ABCC family. Conjugate transporter (TC 3.A.1.208) subfamily. Contains 2 ABC transmembrane type-1 domains. Contains 2 ABC transporter domains. |
| 细胞定位 | Membrane. |

图片



Western blot - Anti-MRP2 antibody [M2III-5] (ab15603)

All lanes : Anti-MRP2 antibody [M2III-5] (ab15603) at 1/20 dilution

Lane 1 : Wild-type A549 (Human lung carcinoma cell line) whole cell lysate

Lane 2 : ABCC2 knockout A549 (Human lung carcinoma cell line) whole cell lysate

Lysates/proteins at 20 µg per lane.

Performed under reducing conditions.

Predicted band size: 185.4 kDa

Lanes 1 - 2: Merged signal (red and green). Green - ab15603 observed at 210 kDa. Red - loading control, **ab52866**, observed at 50 kDa.

ab15603 was shown to recognize ABCC2 in wild-type A549 cells as signal was lost at the expected MW in ABCC2 knockout cells. Additional cross-reactive bands were observed in the wild-type and knockout cells. Wild-type and ABCC2 knockout samples were subjected to SDS-PAGE. The membrane was blocked with 3% Milk. Ab15603 and **ab52866** (Rabbit anti-alpha Tubulin loading control) were incubated overnight at 4°C at 1/20 dilution and 1/20000 dilution respectively. Blots were developed with Goat anti-Mouse IgG H&L (IRDye® 800CW) preabsorbed **ab216772** and Goat anti-Rabbit IgG H&L (IRDye® 680RD) preabsorbed **ab216777** secondary antibodies at 1/20000 dilution for 1 hour at room temperature before imaging.

Please note: All products are "FOR RESEARCH USE ONLY. NOT FOR USE IN DIAGNOSTIC PROCEDURES"

Our Abpromise to you: Quality guaranteed and expert technical support

- Replacement or refund for products not performing as stated on the datasheet
- Valid for 12 months from date of delivery
- Response to your inquiry within 24 hours
- We provide support in Chinese, English, French, German, Japanese and Spanish
- Extensive multi-media technical resources to help you
- We investigate all quality concerns to ensure our products perform to the highest standards

If the product does not perform as described on this datasheet, we will offer a refund or replacement. For full details of the Abpromise, please visit <https://www.abcam.cn/abpromise> or contact our technical team.

Terms and conditions

- Guarantee only valid for products bought direct from Abcam or one of our authorized distributors