




Anti-MRas antibody ab26303

2 图像

概述	
产品名称	Anti-MRas抗体
描述	兔多克隆抗体to MRas
宿主	Rabbit
经测试应用	适用于: WB, ICC/IF
种属反应性	与反应: Human 预测可用于: Rat 
免疫原	Synthetic peptide: KKKKTKWRGDRATGTHKLQ , corresponding to C terminal amino acids 186-204 of Human MRas  <a href="#">Run BLAST with</a>  <a href="#">Run BLAST with</a>
常规说明	<p>The Life Science industry has been in the grips of a reproducibility crisis for a number of years. Abcam is leading the way in addressing this with our range of recombinant monoclonal antibodies and knockout edited cell lines for gold-standard validation. Please check that this product meets your needs before purchasing.</p> <p>If you have any questions, special requirements or concerns, please send us an inquiry and/or contact our Support team ahead of purchase. Recommended alternatives for this product can be found below, along with publications, customer reviews and Q&amp;As</p>
性能	
形式	Liquid
存放说明	Shipped at 4°C. Upon delivery aliquot and store at -20°C or -80°C. Avoid repeated freeze / thaw cycles.
存储溶液	Constituent: Whole serum
纯度	Whole antiserum
克隆	多克隆
同种型	IgG
应用	

The Abpromise guarantee

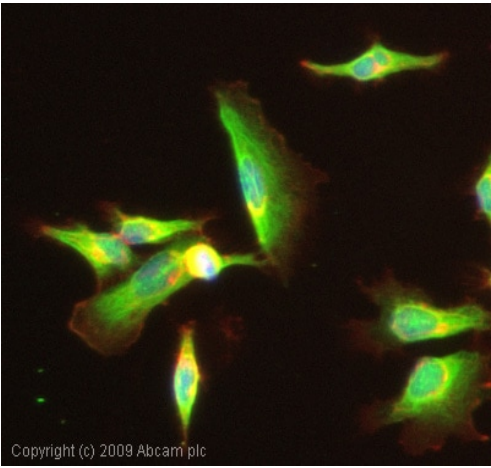
Abpromise™承诺保证使用ab26303于以下的经测试应用

“应用说明”部分 下显示的仅为推荐的起始稀释度;实际最佳的稀释度/浓度应由使用者检定。

应用	Ab评论	说明
WB		1/2500. Detects a band of approximately 32 kDa (predicted molecular weight: 24 kDa). Block with 5% milk and dilute in TBST only.
ICC/IF		1/1000.

靶标	
功能	May serve as an important signal transducer for a novel upstream stimuli in controlling cell proliferation. Weakly activates the MAP kinase pathway.
组织特异性	Expression highly restricted to the brain and heart.
序列相似性	Belongs to the small GTPase superfamily. Ras family.
细胞定位	Cell membrane.

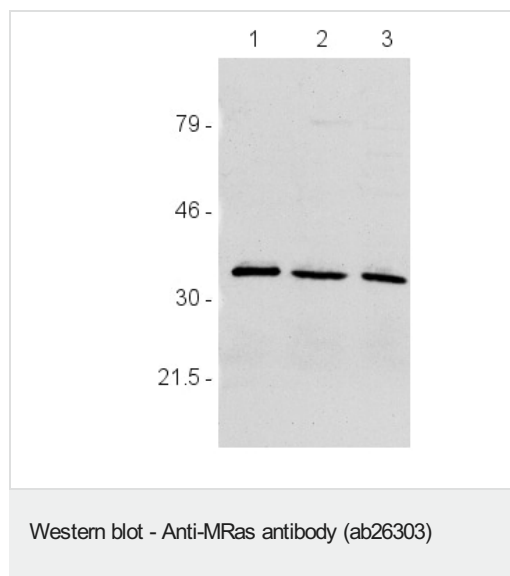
图片



Copyright (c) 2009 Abcam plc

ICC/IF image of ab26303 stained MCF7 cells. The cells were 4% PFA fixed (10 min) and then incubated in 1%BSA / 10% normal goat serum / 0.3M glycine in 0.1% PBS-Tween for 1h to permeabilise the cells and block non-specific protein-protein interactions. The cells were then incubated with the antibody (ab26303, 1/1000 dilution) overnight at +4°C. The secondary antibody (green) was Alexa Fluor® 488 goat anti-rabbit IgG (H+L) used at a 1/1000 dilution for 1h. Alexa Fluor® 594 WGA was used to label plasma membranes (red) at a 1/200 dilution for 1h. DAPI was used to stain the cell nuclei (blue) at a concentration of 1.43µM.

Immunocytochemistry/ Immunofluorescence - Anti-MRas antibody (ab26303)



**All lanes :** Anti-MRas antibody (ab26303)

**Lane 1 :** HEK 293T cell lysate

**Lane 2 :** MCF-7 cell lysate

**Lane 3 :** HeLa cell lysate

**Secondary**

**All lanes :** anti-rabbit HRP conjugated

Developed using the ECL technique.

**Predicted band size:** 24 kDa

**Observed band size:** 32 kDa

Observed band larger than predicted size, thought to be due to post-translational modifications.

**Please note:** All products are "FOR RESEARCH USE ONLY. NOT FOR USE IN DIAGNOSTIC PROCEDURES"

### Our Abpromise to you: Quality guaranteed and expert technical support

- Replacement or refund for products not performing as stated on the datasheet
- Valid for 12 months from date of delivery
- Response to your inquiry within 24 hours
- We provide support in Chinese, English, French, German, Japanese and Spanish
- Extensive multi-media technical resources to help you
- We investigate all quality concerns to ensure our products perform to the highest standards

If the product does not perform as described on this datasheet, we will offer a refund or replacement. For full details of the Abpromise, please visit <https://www.abcam.cn/abpromise> or contact our technical team.

### Terms and conditions

- Guarantee only valid for products bought direct from Abcam or one of our authorized distributors

