

Mouse IgG1, kappa monoclonal [15-6E10A7] - Isotype Control - BSA and Azide free ab221848

[4 References](#) [1 图像](#)

概述

产品名称	小鼠IgG1, kappa单克隆抗体[15-6E10A7]-同型对照- BSA and Azide free
特异性	This Mouse IgG1 Isotype Control Antibody was raised in mouse against a yeast-specific protein making it unsuitable for yeast experiments.
经测试应用	适用于: IHC-P, Flow Cyt, ELISA, ICC/IF
免疫原	Recombinant full length protein. ab221848 binds specifically to DNA-binding domain of the yeast GAL4 protein transcription activator.
常规说明	<p>This antibody clone is manufactured by Abcam.</p> <p>ab221848 is a PBS only buffer formulated version of ab170190.</p> <p>Isotype controls are used to confirm that the primary antibody binding is specific and not a result of non-specific Fc receptor binding or other protein interactions. The isotype control antibody should match the primary antibody's host species, isotype, and possible conjugation.</p> <p>If you require this antibody in a particular buffer formulation or a particular conjugate for your experiments, please contact orders@abcam.com or you can find further information here.</p> <p>The Life Science industry has been in the grips of a reproducibility crisis for a number of years. Abcam is leading the way in addressing this with our range of recombinant monoclonal antibodies and knockout edited cell lines for gold-standard validation. Please check that this product meets your needs before purchasing.</p> <p>If you have any questions, special requirements or concerns, please send us an inquiry and/or contact our Support team ahead of purchase. Recommended alternatives for this product can be found below, along with publications, customer reviews and Q&As</p>

性能

形式	Liquid
存放说明	Shipped at 4°C. Store at +4°C.
存储溶液	pH: 7.5 Constituent: 100% PBS
无载体	是
纯度	Ammonium Sulphate Precipitation

克隆	单克隆
克隆编号	15-6E10A7
同种型	IgG1
轻链类型	kappa

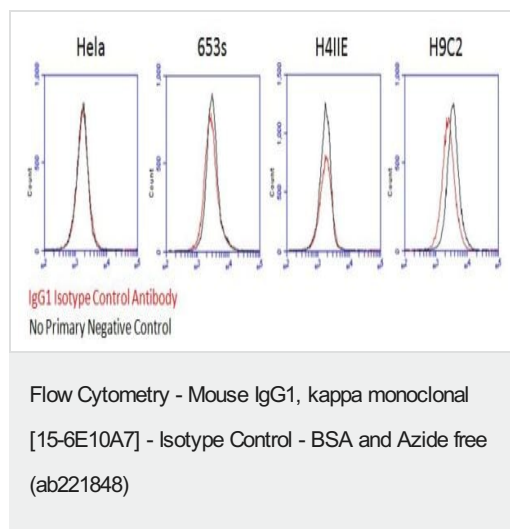
应用

The Abpromise guarantee **Abpromise™**承诺保证使用ab221848于以下的经测试应用

“应用说明”部分 下显示的仅为推荐的起始稀释度;实际最佳的稀释度/浓度应由使用者检定。

应用	Ab评论	说明
IHC-P		Use at an assay dependent concentration. PubMed: 26627833
Flow Cyt		Use a concentration of 1 µg/ml.
ELISA		Use at an assay dependent concentration.
ICC/IF		Use a concentration of 1 µg/ml.

图片



This flow cytometry data was generated using the same antibody clone under a different buffer format (cat# [ab170190](#)).

Flow cytometry experiments with 4% PFA fixed HeLa (Human adenocarcinoma), 653s (mouse myeloma), H4IIE (rat hepatoma) and H9C2 (rat myoblast) were performed with the IgG1 Isotype Control Antibody (red) and no primary antibody negative control (black).

An Alexa Fluor® 488 conjugate with isotype specificity to the mouse antibody was used as a secondary antibody. The isotype control at 1 µg/mL shows no higher signal than the no primary negative control.

Please note: All products are "FOR RESEARCH USE ONLY. NOT FOR USE IN DIAGNOSTIC PROCEDURES"

Our Abpromise to you: Quality guaranteed and expert technical support

- Replacement or refund for products not performing as stated on the datasheet
- Valid for 12 months from date of delivery
- Response to your inquiry within 24 hours
- We provide support in Chinese, English, French, German, Japanese and Spanish

- Extensive multi-media technical resources to help you
- We investigate all quality concerns to ensure our products perform to the highest standards

If the product does not perform as described on this datasheet, we will offer a refund or replacement. For full details of the Abpromise, please visit <https://www.abcam.cn/abpromise> or contact our technical team.

Terms and conditions

- Guarantee only valid for products bought direct from Abcam or one of our authorized distributors