

Anti-MMP8 antibody ab53017

★★★★★ [7 Abreviews](#) [12 References](#) [3 图像](#)

概述

产品名称	Anti-MMP8抗体
描述	兔多克隆抗体to MMP8
宿主	Rabbit
经测试应用	适用于: WB, IHC-P, ICC/IF
种属反应性	与反应: Mouse, Human
免疫原	Synthetic peptide derived from human MMP8
常规说明	<p>The Life Science industry has been in the grips of a reproducibility crisis for a number of years. Abcam is leading the way in addressing this with our range of recombinant monoclonal antibodies and knockout edited cell lines for gold-standard validation. Please check that this product meets your needs before purchasing.</p> <p>If you have any questions, special requirements or concerns, please send us an inquiry and/or contact our Support team ahead of purchase. Recommended alternatives for this product can be found below, along with publications, customer reviews and Q&amp;As</p>

性能

形式	Liquid
存放说明	Shipped at 4°C. Upon delivery aliquot and store at -20°C. Avoid freeze / thaw cycles.
存储溶液	pH: 7.40 Preservative: 0.02% Sodium azide Constituents: 50% Glycerol, 0.87% Sodium chloride, PBS
纯度	Immunogen affinity purified
克隆	多克隆
同种型	IgG

应用

**The Abpromise guarantee**      **Abpromise™**承诺保证使用ab53017于以下的经测试应用

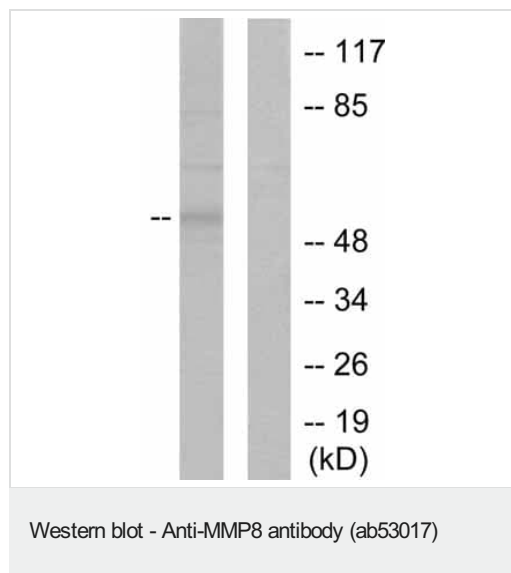
“应用说明”部分 下显示的仅为推荐的起始稀释度;实际最佳的稀释度/浓度应由使用者检定。

应用	Ab评论	说明
WB	★★★★★ (4)	1/500 - 1/1000. Detects a band of approximately 53 kDa (predicted molecular weight: 53 kDa).
IHC-P	★★★★★ (2)	Use at an assay dependent concentration.
ICC/IF		Use a concentration of 1 - 5 µg/ml.

## 靶标

功能	Can degrade fibrillar type I, II, and III collagens.
组织特异性	Neutrophils.
序列相似性	Belongs to the peptidase M10A family. Contains 4 hemopexin-like domains.
结构域	The conserved cysteine present in the cysteine-switch motif binds the catalytic zinc ion, thus inhibiting the enzyme. The dissociation of the cysteine from the zinc ion upon the activation-peptide release activates the enzyme.
细胞定位	Cytoplasmic granule. Secreted > extracellular space > extracellular matrix. Stored in intracellular granules.

## 图片



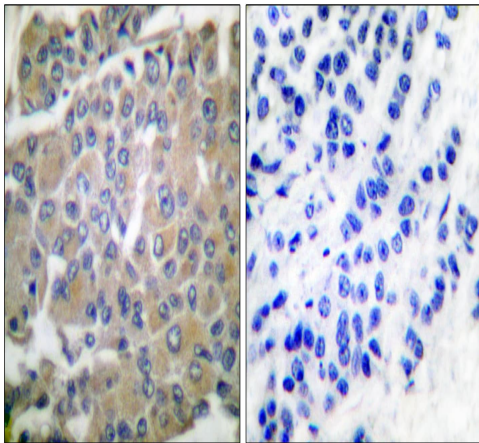
**All lanes :** Anti-MMP8 antibody (ab53017) at 1/500 dilution

**Lane 1 :** Extracts from NIH/3T3 cells with no immunizing peptide

**Lane 2 :** Extracts from NIH/3T3 cells with immunizing peptide

**Predicted band size:** 53 kDa

**Observed band size:** 53 kDa



Immunohistochemistry (Formalin/PFA-fixed paraffin-embedded sections) - Anti-MMP8 antibody (ab53017)

Immunohistochemical analysis of paraffin-embedded human breast carcinoma tissue using MMP8 antibody at 1/50 dilution. Left hand image; untreated tissue, Right hand image; tissue treated with the immunising peptide.

Immunocytochemistry/ Immunofluorescence - Anti-MMP8 antibody (ab53017)

ICC/IF image of **ab63017** stained HeLa cells. The cells were 100% methanol fixed (5 min) and then incubated in 1%BSA / 10% normal goat serum / 0.3M glycine in 0.1% PBS-Tween for 1h to permeabilise the cells and block non-specific protein-protein interactions. The cells were then incubated with the antibody (ab53017, 1µg/ml) overnight at +4°C. The secondary antibody (green) was Alexa Fluor® 488 goat anti-rabbit IgG (H+L) used at a 1/1000 dilution for 1h. Alexa Fluor® 594 WGA was used to label plasma membranes (red) at a 1/200 dilution for 1h. DAPI was used to stain the cell nuclei (blue) at a concentration of 1.43µM.

**Please note:** All products are "FOR RESEARCH USE ONLY. NOT FOR USE IN DIAGNOSTIC PROCEDURES"

### Our Abpromise to you: Quality guaranteed and expert technical support

- Replacement or refund for products not performing as stated on the datasheet
- Valid for 12 months from date of delivery
- Response to your inquiry within 24 hours
- We provide support in Chinese, English, French, German, Japanese and Spanish

- Extensive multi-media technical resources to help you
- We investigate all quality concerns to ensure our products perform to the highest standards

If the product does not perform as described on this datasheet, we will offer a refund or replacement. For full details of the Abpromise, please visit <https://www.abcam.cn/abpromise> or contact our technical team.

#### **Terms and conditions**

---

- Guarantee only valid for products bought direct from Abcam or one of our authorized distributors