

Anti-MMP3 antibody ab53015

★★★★★ [7 Abreviews](#) [111 References](#) [5 图像](#)

概述

产品名称	Anti-MMP3抗体
描述	兔多克隆抗体to MMP3
宿主	Rabbit
经测试应用	适用于: IHC-P, WB, ICC/IF
种属反应性	与反应: Human
免疫原	Synthetic peptide derived from human MMP3 Peptide available as ab134501 .
常规说明	<p>The Life Science industry has been in the grips of a reproducibility crisis for a number of years. Abcam is leading the way in addressing this with our range of recombinant monoclonal antibodies and knockout edited cell lines for gold-standard validation. Please check that this product meets your needs before purchasing.</p> <p>If you have any questions, special requirements or concerns, please send us an inquiry and/or contact our Support team ahead of purchase. Recommended alternatives for this product can be found below, along with publications, customer reviews and Q&As</p>

性能

形式	Liquid
存放说明	Shipped at 4°C. Upon delivery aliquot and store at -20°C. Avoid freeze / thaw cycles.
存储溶液	pH: 7.40 Preservative: 0.02% Sodium azide Constituents: 50% Glycerol, 0.87% Sodium chloride, PBS
纯度	Immunogen affinity purified
克隆	多克隆
同种型	IgG

应用

The Abpromise guarantee **Abpromise™** 承诺保证使用ab53015于以下的经测试应用

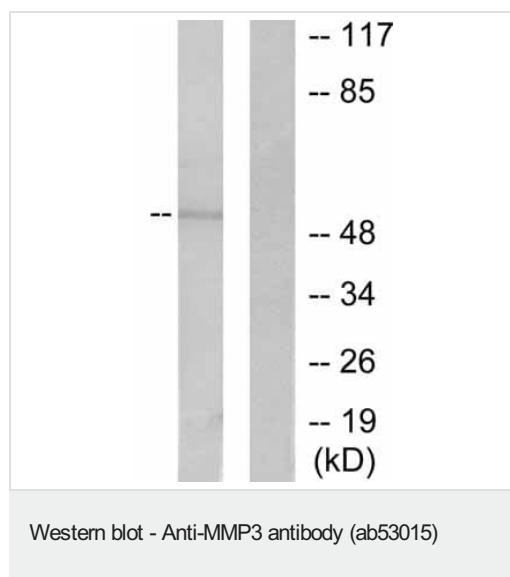
“应用说明”部分 下显示的仅为推荐的起始稀释度;实际最佳的稀释度/浓度应由使用者检定。

应用	Ab评论	说明
IHC-P	★★★★★ (3)	1/50 - 1/100.
WB	★★★★★ (2)	1/500 - 1/1000. Detects a band of approximately 54 kDa (predicted molecular weight: 54 kDa).
ICC/IF	★★★★★ (1)	Use a concentration of 5 µg/ml.

靶标

功能	Can degrade fibronectin, laminin, gelatins of type I, III, IV, and V; collagens III, IV, X, and IX, and cartilage proteoglycans. Activates procollagenase.
序列相似性	Belongs to the peptidase M10A family. Contains 4 hemopexin-like domains.
结构域	The conserved cysteine present in the cysteine-switch motif binds the catalytic zinc ion, thus inhibiting the enzyme. The dissociation of the cysteine from the zinc ion upon the activation-peptide release activates the enzyme.
细胞定位	Secreted > extracellular space > extracellular matrix.

图片



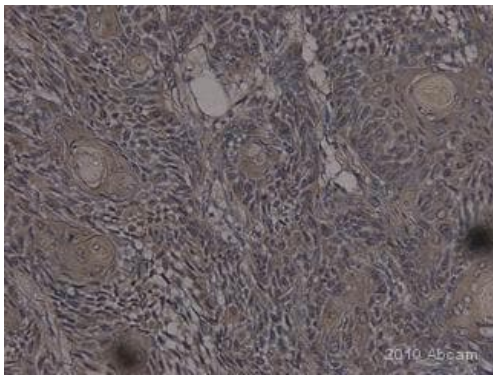
All lanes : Anti-MMP3 antibody (ab53015) at 1/500 dilution

Lane 1 : Extracts from 293 cells, untreated.

Lane 2 : Extracts from 293 cells, treated with the immunising peptide.

Predicted band size: 54 kDa

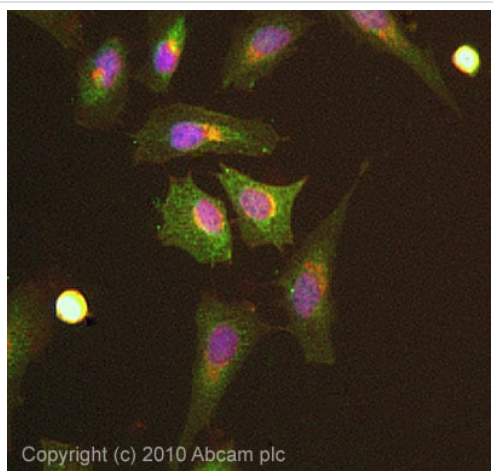
Observed band size: 54 kDa



Immunohistochemistry (Formalin/PFA-fixed paraffin-embedded sections) - Anti-MMP3 antibody (ab53015)

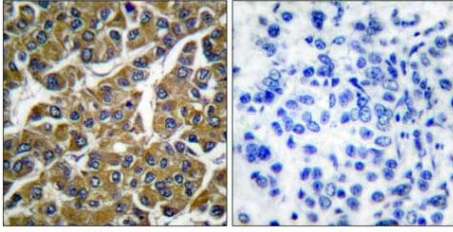
This image is courtesy of an anonymous abreview.

Immunohistochemistry (Formalin/PFA-fixed paraffin-embedded sections) analysis of human lymphoma labeling MMP3 with ab53015 at 1/100 dilution. Tissue was fixed with formaldehyde; heat-mediated antigen retrieval was performed using citrate buffer (pH 6.0). The tissue was blocked with 1% serum for 1 hour at 25°C. A biotin conjugated polyclonal goat anti-rabbit secondary antibody was used at 1/200 dilution.



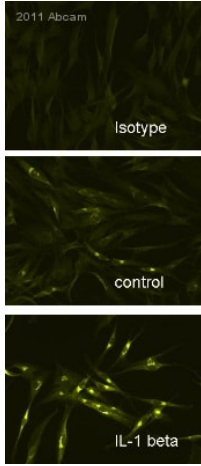
Immunocytochemistry/ Immunofluorescence - Anti-MMP3 antibody (ab53015)

ICC/IF image of ab53015 stained HeLa cells. The cells were 4% formaldehyde fixed (10 min) and then incubated in 1%BSA / 10% normal goat serum / 0.3M glycine in 0.1% PBS-Tween for 1h to permeabilise the cells and block non-specific protein-protein interactions. The cells were then incubated with the antibody (ab53015, 1µg/ml) overnight at +4°C. The secondary antibody (green) was Alexa Fluor® 488 goat anti-rabbit IgG (H+L) used at a 1/1000 dilution for 1h. Alexa Fluor® 594 WGA was used to label plasma membranes (red) at a 1/200 dilution for 1h. DAPI was used to stain the cell nuclei (blue) at a concentration of 1.43µM.



Immunohistochemistry (Formalin/PFA-fixed paraffin-embedded sections) - Anti-MMP3 antibody (ab53015)

Immunohistochemical analysis of paraffin-embedded human breast carcinoma tissue using MMP3 antibody at a dilution of 1/50. Left: without immunizing peptide; Right: with immunizing peptide.



Immunocytochemistry/ Immunofluorescence - Anti-MMP3 antibody (ab53015)

This image is courtesy of an Abreview submitted by Torsten Lowin.

Top image: Isotype control Middle image: Unstimulated cells
Bottom image: IL-1 beta stimulated cells (24 hours, 10 ng/ml)
ab53015 staining MMP3 in Human synovial fibroblasts by Immunocytochemistry/ Immunofluorescence. Cells were fixed in formaldehyde and permeabilized in methanol for 15 minutes at -20°C prior to blocking in 1% BSA for 1 hour at 25°C. The primary antibody was diluted 1/1000 and incubated with the sample for 2 hours at 25°C. The secondary antibody was Cy5[®]-conjugated Goat anti-Rabbit polyclonal, diluted 1/200.

Please note: All products are "FOR RESEARCH USE ONLY. NOT FOR USE IN DIAGNOSTIC PROCEDURES"

Our Abpromise to you: Quality guaranteed and expert technical support

- Replacement or refund for products not performing as stated on the datasheet
- Valid for 12 months from date of delivery
- Response to your inquiry within 24 hours
- We provide support in Chinese, English, French, German, Japanese and Spanish
- Extensive multi-media technical resources to help you
- We investigate all quality concerns to ensure our products perform to the highest standards

If the product does not perform as described on this datasheet, we will offer a refund or replacement. For full details of the Abpromise, please visit <https://www.abcam.cn/abpromise> or contact our technical team.

Terms and conditions

- Guarantee only valid for products bought direct from Abcam or one of our authorized distributors