




Anti-MMP24 antibody ab233004

11 图像

概述

产品名称	Anti-MMP24抗体
描述	兔多克隆抗体to MMP24
宿主	Rabbit
经测试应用	适用于: IHC-P, WB
种属反应性	与反应: Rat, Human 预测可用于: Mouse 
免疫原	Recombinant fragment (His-T7-tag) corresponding to Human MMP24 aa 400 to the C-terminus. Two N-terminal tags. (Expressed in E.coli). Database link: Q9Y5R2  Run BLAST with  Run BLAST with
阳性对照	WB: Rat pancreas, cerebrum and kidney lysate; Human liver lysate; Recombinant human MMP24 protein. IHC-P: Human prostate, kidney, skin cancer, colorectal cancer, liver and stomach cancer tissue.
常规说明	<p>The Life Science industry has been in the grips of a reproducibility crisis for a number of years. Abcam is leading the way in addressing this with our range of recombinant monoclonal antibodies and knockout edited cell lines for gold-standard validation. Please check that this product meets your needs before purchasing.</p> <p>If you have any questions, special requirements or concerns, please send us an inquiry and/or contact our Support team ahead of purchase. Recommended alternatives for this product can be found below, along with publications, customer reviews and Q&As</p>

性能

形式	Liquid
存放说明	Shipped at 4°C. Store at +4°C short term (1-2 weeks). Upon delivery aliquot. Store at -20°C long term. Avoid freeze / thaw cycle.
存储溶液	pH: 7.40 Preservative: 0.011% Proclin 300 Constituents: 55.77% Glycerol (glycerin, glycerine), 44.219% PBS
纯度	Immunogen affinity purified
纯化说明	Antigen-specific affinity chromatography followed by Protein A affinity chromatography.

克隆

多克隆

同种型

IgG

应用

The Abpromise guarantee

Abpromise™承诺保证使用ab233004于以下的经测试应用

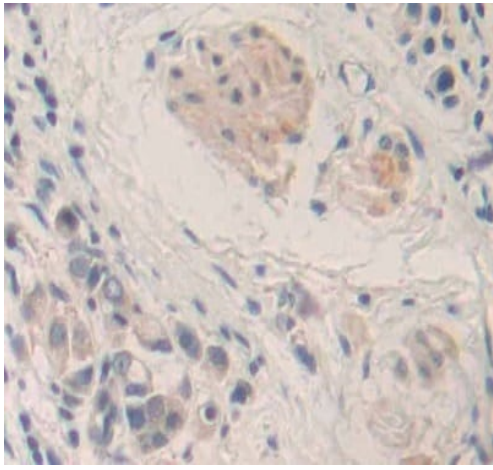
“应用说明”部分 下显示的仅为推荐的起始稀释度;实际最佳的稀释度/浓度应由使用者检定。

应用	Ab评论	说明
IHC-P		Use a concentration of 5 - 20 µg/ml.
WB		Use a concentration of 0.2 - 2 µg/ml.

靶标

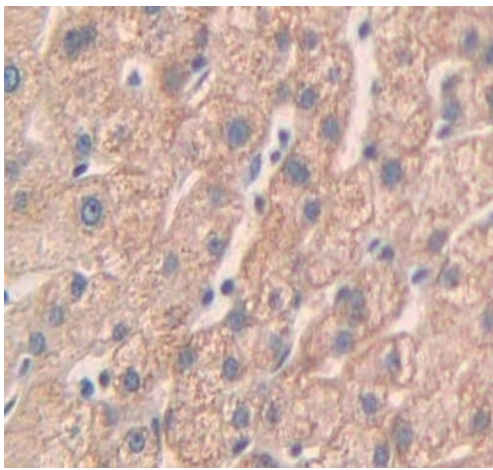
功能	Activates progelatinase A. May also be a proteoglycanase involved in degradation of proteoglycans, such as dermatan sulfate and chondroitin sulfate proteoglycans. Cleaves partially fibronectin, but not collagen type I, nor laminin.
组织特异性	Predominantly expressed in brain, kidney, pancreas and lung. Overexpressed in a series of brain tumors, including astrocytomas and glioblastomas.
序列相似性	Belongs to the peptidase M10A family. Contains 4 hemopexin-like domains.
结构域	The conserved cysteine present in the cysteine-switch motif binds the catalytic zinc ion, thus inhibiting the enzyme. The dissociation of the cysteine from the zinc ion upon the activation-peptide release activates the enzyme.
翻译后修饰	The precursor is cleaved by a furin endopeptidase.
细胞定位	Cell membrane and Secreted > extracellular space > extracellular matrix. Also shed from cell surface as soluble proteinase, by a proteolytic cleavage.

图片



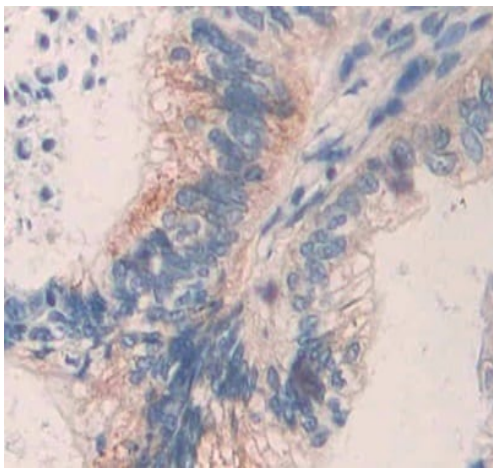
Immunohistochemistry (Formalin/PFA-fixed paraffin-embedded sections) - Anti-MMP24 antibody (ab233004)

Formalin-fixed, paraffin-embedded human stomach cancer tissue stained for MMP24 using ab233004 at 10 µg/ml in immunohistochemical analysis. DAB staining.



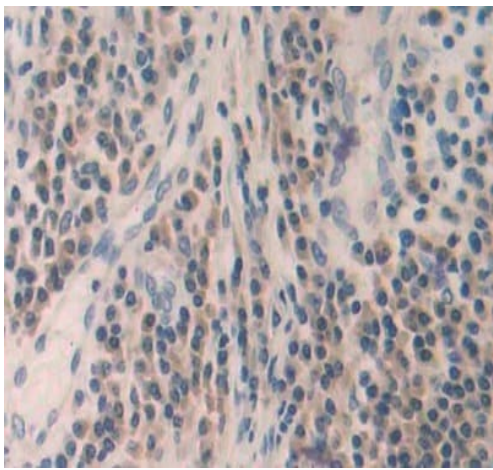
Immunohistochemistry (Formalin/PFA-fixed paraffin-embedded sections) - Anti-MMP24 antibody (ab233004)

Formalin-fixed, paraffin-embedded human liver tissue stained for MMP24 using ab233004 at 10 µg/ml in immunohistochemical analysis. DAB staining.



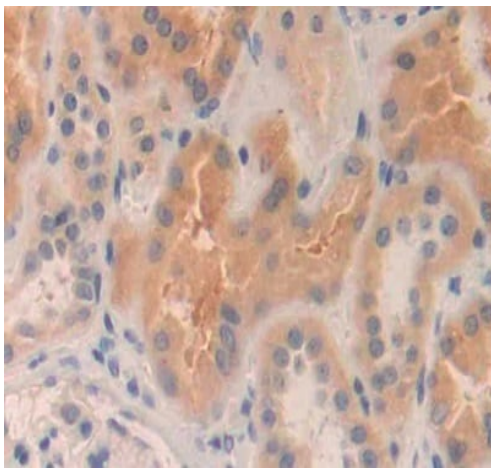
Immunohistochemistry (Formalin/PFA-fixed paraffin-embedded sections) - Anti-MMP24 antibody (ab233004)

Formalin-fixed, paraffin-embedded human colorectal cancer tissue stained for MMP24 using ab233004 at 10 µg/ml in immunohistochemical analysis. DAB staining.



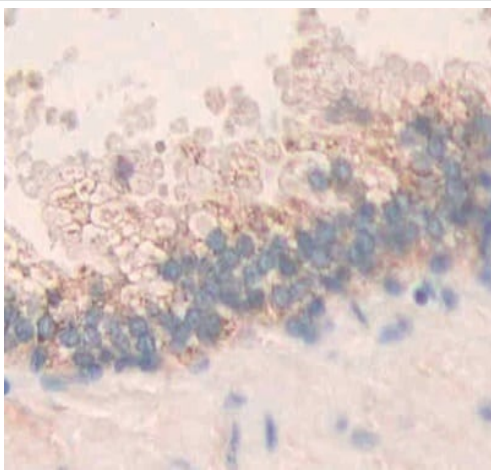
Immunohistochemistry (Formalin/PFA-fixed paraffin-embedded sections) - Anti-MMP24 antibody (ab233004)

Formalin-fixed, paraffin-embedded human skin cancer tissue stained for MMP24 using ab233004 at 10 µg/ml in immunohistochemical analysis. DAB staining.



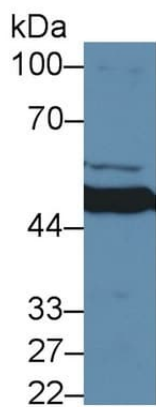
Immunohistochemistry (Formalin/PFA-fixed paraffin-embedded sections) - Anti-MMP24 antibody (ab233004)

Formalin-fixed, paraffin-embedded human kidney tissue stained for MMP24 using ab233004 at 10 µg/ml in immunohistochemical analysis. DAB staining.



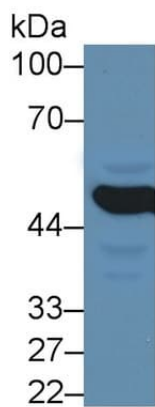
Immunohistochemistry (Formalin/PFA-fixed paraffin-embedded sections) - Anti-MMP24 antibody (ab233004)

Formalin-fixed, paraffin-embedded human prostate tissue stained for MMP24 using ab233004 at 10 µg/ml in immunohistochemical analysis. DAB staining.



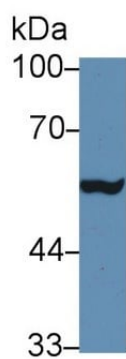
Western blot - Anti-MMP24 antibody (ab233004)

Anti-MMP24 antibody (ab233004) at 1.5 µg/ml + Rat kidney lysate



Anti-MMP24 antibody (ab233004) at 1.5 µg/ml + Rat cerebrum lysate

Western blot - Anti-MMP24 antibody (ab233004)



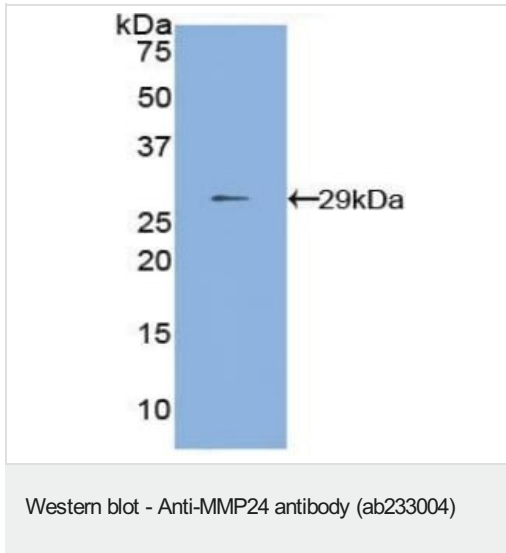
Anti-MMP24 antibody (ab233004) at 2 µg/ml + Human liver lysate

Western blot - Anti-MMP24 antibody (ab233004)



Anti-MMP24 antibody (ab233004) at 1.5 µg/ml + Rat pancreas lysate

Western blot - Anti-MMP24 antibody (ab233004)



Anti-MMP24 antibody (ab233004) at 2 µg/ml + Recombinant human MMP24 protein

Please note: All products are "FOR RESEARCH USE ONLY. NOT FOR USE IN DIAGNOSTIC PROCEDURES"

Our Abpromise to you: Quality guaranteed and expert technical support

- Replacement or refund for products not performing as stated on the datasheet
- Valid for 12 months from date of delivery
- Response to your inquiry within 24 hours
- We provide support in Chinese, English, French, German, Japanese and Spanish
- Extensive multi-media technical resources to help you
- We investigate all quality concerns to ensure our products perform to the highest standards

If the product does not perform as described on this datasheet, we will offer a refund or replacement. For full details of the Abpromise, please visit <https://www.abcam.cn/abpromise> or contact our technical team.

Terms and conditions

- Guarantee only valid for products bought direct from Abcam or one of our authorized distributors