

Anti-MMP20 antibody [EP1275Y] ab76109

重组 RabMAb

4 References [2 图像](#)

概述

产品名称	Anti-MMP20抗体[EP1275Y]
描述	兔单克隆抗体[EP1275Y] to MMP20
宿主	Rabbit
经测试应用	适用于: WB 不适用于: Flow Cyt, ICC/IF or IP
种属反应性	与反应: Mouse, Rat, Human
免疫原	Synthetic peptide within Human MMP20 aa 450-550 (C terminal). The exact sequence is proprietary.
阳性对照	WB: HeLa cell lysates, Mouse and Rat heart lysates.
常规说明	The production method for this product has been changed from hybridoma to recombinant on 15th April 2024 This product is a recombinant monoclonal antibody, which offers several advantages including: - High batch-to-batch consistency and reproducibility - Improved sensitivity and specificity - Long-term security of supply - Animal-free production For more information see here . Our RabMAb [®] technology is a patented hybridoma-based technology for making rabbit monoclonal antibodies. For details on our patents, please refer to RabMAb[®] patents .

性能

形式	Liquid
存放说明	Shipped at 4°C. Upon delivery aliquot and store at -20°C. Avoid repeated freeze / thaw cycles.
存储溶液	pH: 7.20 Preservative: 0.05% Sodium azide Constituents: 0.1% BSA, 40% Glycerol (glycerin, glycerine), 59% PBS
纯度	Protein A purified
克隆	单克隆

克隆编号 EP1275Y

同种型 IgG

应用

The Abpromise guarantee **Abpromise™**承诺保证使用ab76109于以下的经测试应用

“应用说明”部分下显示的仅为推荐的起始稀释度;实际最佳的稀释度/浓度应由使用者检定。

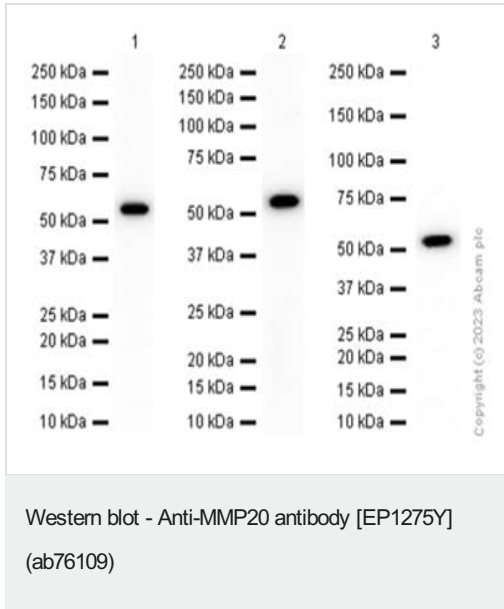
应用	Ab评论	说明
WB		1/1000. Detects a band of approximately 54 kDa (predicted molecular weight: 54 kDa).

应用说明 Is unsuitable for Flow Cyt, ICC/IF or IP.

靶标

功能	Degrades amelogenin, the major protein component of the enamel matrix and two of the macromolecules characterizing the cartilage extracellular matrix: aggrecan and the cartilage oligomeric matrix protein (COMP). May play a central role in tooth enamel formation.
组织特异性	Expressed specifically in the enamel organ.
疾病相关	Defects in MMP20 are the cause of amelogenesis imperfecta hypomaturation type 2A2 (AI2A2) [MIM:612529]. AI2A2 is an autosomal recessive defect of enamel formation. The disorder involves both primary and secondary dentitions. The teeth have a shiny agar jelly appearance and the enamel is softer than normal. Brown pigment is present in middle layers of enamel.
序列相似性	Belongs to the peptidase M10A family. Contains 4 hemopexin-like domains.
结构域	The conserved cysteine present in the cysteine-switch motif binds the catalytic zinc ion, thus inhibiting the enzyme. The dissociation of the cysteine from the zinc ion upon the activation-peptide release activates the enzyme.
翻译后修饰	Autoactivates at least at the 107-Asn-Tyr-108 site.
细胞定位	Secreted > extracellular space > extracellular matrix.

图片



All lanes : Anti-MMP20 antibody [EP1275Y] (ab76109) at 1/1000 dilution

Lane 1 : HeLa (Human epithelial cells from cervix adenocarcinoma) whole cell lysate

Lane 2 : Mouse heart lysate

Lane 3 : Rat heart lysate

Lysates/proteins at 15 µg per lane.

Secondary

All lanes : Goat Anti-Rabbit IgG H&L (HRP) ([ab97051](#)) at 1/20000 dilution

Predicted band size: 54 kDa

Blocking and diluting buffer and concentration: 5% NFD/MTBST.

Exposure time: Lane 1 and Lane 2: 20 seconds, Lane 3: 3 seconds

Why choose a recombinant antibody?

Research with confidence
Consistent and reproducible results

Long-term and scalable supply
Recombinant technology

Success from the first experiment
Confirmed specificity

Ethical standards compliant
Animal-free production

Anti-MMP20 antibody [EP1275Y] (ab76109)

Please note: All products are "FOR RESEARCH USE ONLY. NOT FOR USE IN DIAGNOSTIC PROCEDURES"

Our Abpromise to you: Quality guaranteed and expert technical support

- Replacement or refund for products not performing as stated on the datasheet
- Valid for 12 months from date of delivery
- Response to your inquiry within 24 hours

- We provide support in Chinese, English, French, German, Japanese and Spanish
- Extensive multi-media technical resources to help you
- We investigate all quality concerns to ensure our products perform to the highest standards

If the product does not perform as described on this datasheet, we will offer a refund or replacement. For full details of the Abpromise, please visit <https://www.abcam.cn/abpromise> or contact our technical team.

Terms and conditions

- Guarantee only valid for products bought direct from Abcam or one of our authorized distributors