

Anti-MMP14 antibody - Hinge region ab38971

★★★★★ [5 Abreviews](#) [39 References](#) [3 图像](#)

概述

产品名称	Anti-MMP14抗体- Hinge region
描述	兔多克隆抗体to MMP14 - Hinge region
宿主	Rabbit
特异性	This antibody binds to MMP14, but does not cross react with the other MMP family members (MMP1, MMP2, MMP3, MMP9).
经测试应用	适用于: WB
种属反应性	与反应: Human
免疫原	Synthetic peptide corresponding to Human MMP14. (Peptide available as ab41091)
常规说明	<p>The Life Science industry has been in the grips of a reproducibility crisis for a number of years. Abcam is leading the way in addressing this with our range of recombinant monoclonal antibodies and knockout edited cell lines for gold-standard validation. Please check that this product meets your needs before purchasing.</p> <p>If you have any questions, special requirements or concerns, please send us an inquiry and/or contact our Support team ahead of purchase. Recommended alternatives for this product can be found below, along with publications, customer reviews and Q&As</p>

性能

形式	Liquid
存放说明	Shipped at 4°C. Store at +4°C short term (1-2 weeks). Upon delivery aliquot. Store at -20°C long term. Avoid freeze / thaw cycle.
存储溶液	Preservative: 0.05% Sodium azide Constituent: 50% Glycerol
纯度	Immunogen affinity purified
克隆	多克隆
同种型	IgG

应用

The Abpromise guarantee

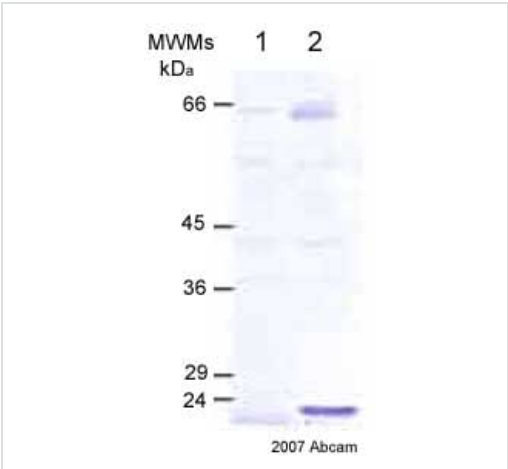
Abpromise™承诺保证使用ab38971于以下的经测试应用

“应用说明”部分 下显示的仅为推荐的起始稀释度;实际最佳的稀释度/浓度应由使用者检定。

应用	Ab评论	说明
WB	★★★★☆ (3)	1/2000 - 1/5000. Predicted molecular weight: 66 kDa. When used against the reduced protein this antibody identifies bands at 65 Kd and 63 Kd (the pro-form and active form) as well as activation/breakdown products.

靶标	
功能	Seems to specifically activate progelatinase A. May thus trigger invasion by tumor cells by activating progelatinase A on the tumor cell surface. May be involved in actin cytoskeleton reorganization by cleaving PTK7.
组织特异性	Expressed in stromal cells of colon, breast, and head and neck. Expressed in lung tumors.
序列相似性	Belongs to the peptidase M10A family. Contains 4 hemopexin-like domains.
结构域	The conserved cysteine present in the cysteine-switch motif binds the catalytic zinc ion, thus inhibiting the enzyme. The dissociation of the cysteine from the zinc ion upon the activation-peptide release activates the enzyme.
翻译后修饰	The precursor is cleaved by a furin endopeptidase.
细胞定位	Membrane. Melanosome. Identified by mass spectrometry in melanosome fractions from stage I to stage IV.

图片



Western blot - Anti-MMP14 antibody - Hinge region (ab38971)

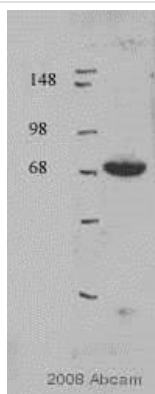
All lanes : Anti-MMP14 antibody - Hinge region (ab38971)

Lane 1 : Cell lysates from human dermal fibroblasts *neonatal* (no treatment)

Lane 2 : Cell lysates from human dermal fibroblasts *neonatal* (treated with Il1beta)

Predicted band size: 66 kDa

Observed band size: 66 kDa



Western blot - Anti-MMP14 antibody - Hinge region (ab38971)

This image is courtesy of an anonymous Abreview

Anti-MMP14 antibody - Hinge region (ab38971) at 1/1000 dilution + HT1080 whole cell lysate at 30 µg

Secondary

HRP-conjugated donkey anti-rabbit

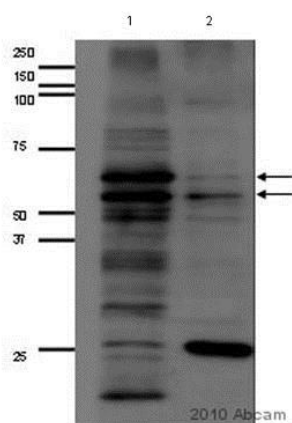
Developed using the ECL technique.

Performed under reducing conditions.

Predicted band size: 66 kDa

Observed band size: 64 kDa

Exposure time: 1 minute



Western blot - Anti-MMP14 antibody - Hinge region (ab38971)

This image is a courtesy of an anonymous Abreview

All lanes : Anti-MMP14 antibody - Hinge region (ab38971) at 1/5000 dilution

Lane 1 : Whole cell lysate prepared from HT1080 cells

Lane 2 : Whole cell lysate prepared from human vascular smooth muscle cells

Lysates/proteins at 5 µg per lane.

Secondary

All lanes : HRP conjugated donkey anti-rabbit IgG at 1/2000 dilution

Developed using the ECL technique.

Performed under reducing conditions.

Predicted band size: 66 kDa

Observed band size: 63,65 kDa

Additional bands at: 20 kDa (possible non-specific binding)

Exposure time: 30 seconds

Blocked using 5% milk for 1 hour at 20°C.

Please note: All products are "FOR RESEARCH USE ONLY. NOT FOR USE IN DIAGNOSTIC PROCEDURES"

Our Abpromise to you: Quality guaranteed and expert technical support

- Replacement or refund for products not performing as stated on the datasheet
- Valid for 12 months from date of delivery
- Response to your inquiry within 24 hours
- We provide support in Chinese, English, French, German, Japanese and Spanish
- Extensive multi-media technical resources to help you
- We investigate all quality concerns to ensure our products perform to the highest standards

If the product does not perform as described on this datasheet, we will offer a refund or replacement. For full details of the Abpromise, please visit <https://www.abcam.cn/abpromise> or contact our technical team.

Terms and conditions

- Guarantee only valid for products bought direct from Abcam or one of our authorized distributors