

Anti-MMP13 antibody ab39012

★★★★★ [18 Abreviews](#) [428 References](#) [2 图像](#)

概述

产品名称	Anti-MMP13抗体
描述	兔多克隆抗体to MMP13
宿主	Rabbit
特异性	ab39012 recognizes the latent proenzyme, at 60 Kd, as well as the active form at 48 Kd, and intermediate activation forms. It does not cross react with the other MMP family members. ab39012 recognizes the Hinge region of MMP13.
经测试应用	适用于: IHC-P, WB, IHC-Fr, ICC/IF, Flow Cyt, Sandwich ELISA
种属反应性	与反应: Mouse, Rat, Dog, Human
免疫原	Synthetic peptide corresponding to Human MMP13 (Hinge). Database link: P45452 (Peptide available as ab238653 , ab44853)
常规说明	<p>The Life Science industry has been in the grips of a reproducibility crisis for a number of years. Abcam is leading the way in addressing this with our range of recombinant monoclonal antibodies and knockout edited cell lines for gold-standard validation. Please check that this product meets your needs before purchasing.</p> <p>If you have any questions, special requirements or concerns, please send us an inquiry and/or contact our Support team ahead of purchase. Recommended alternatives for this product can be found below, along with publications, customer reviews and Q&As</p>

性能

形式	Liquid
存放说明	Shipped at 4°C. Store at +4°C short term (1-2 weeks). Upon delivery aliquot. Store at -20°C. Avoid freeze / thaw cycle.
存储溶液	Preservative: 0.05% Sodium azide Constituent: 50% Glycerol
纯度	Immunogen affinity purified
纯化说明	The antibody has been peptide-affinity purified.
克隆	多克隆
同种型	IgG

应用

The Abpromise guarantee

Abpromise™承诺保证使用ab39012于以下的经测试应用

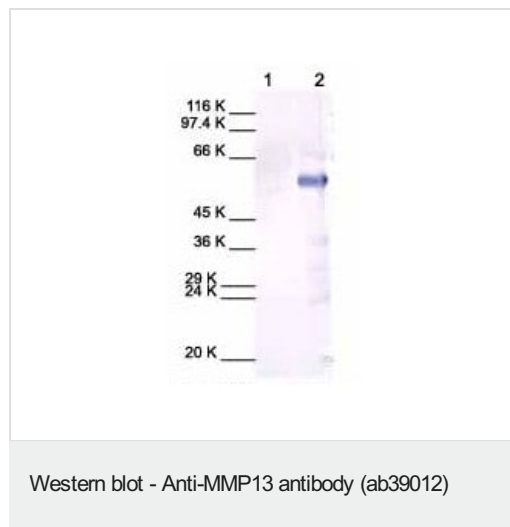
“应用说明”部分 下显示的仅为推荐的起始稀释度;实际最佳的稀释度/浓度应由使用者检定。

应用	Ab评论	说明
IHC-P	★★★★★ (11)	Use at an assay dependent concentration.
WB	★★★★★ (2)	1/3000 - 1/6000. Predicted molecular weight: 54 kDa. 1/3000, when using colorimetric substrates such as BCIP/NBT - 1/6000, when using chemiluminescent substrates. Dilution optimised using Chromogenic detection. When used against the reduced protein identifies a band at 60 Kd. Note: The low endogenous protein levels may require concentration of samples by ultrafiltration or ammonium sulfate precipitation prior to Western
IHC-Fr	★★★★★ (3)	Use at an assay dependent concentration.
ICC/IF	★★★★★ (1)	Use at an assay dependent concentration. PubMed: 24056368
Flow Cyt		Use at an assay dependent concentration. ab171870 - Rabbit polyclonal IgG, is suitable for use as an isotype control with this antibody.
Sandwich ELISA		Use a concentration of 0.5 µg/ml. For sandwich ELISA, use this antibody as Detection at 0.5µg/ml with ab77949 as Capture.

靶标

功能	Degrades collagen type I. Does not act on gelatin or casein. Could have a role in tumoral process.
组织特异性	Seems to be specific to breast carcinomas.
疾病相关	Defects in MMP13 are the cause of spondyloepimetaphyseal dysplasia Missouri type (SEMD-MO) [MIM:602111]. A bone disease characterized by moderate to severe metaphyseal changes, mild epiphyseal involvement, rhizomelic shortening of the lower limbs with bowing of the femora and/or tibiae, coxa vara, genu varum and pear-shaped vertebrae in childhood. Epimetaphyseal changes improve with age. Defects in MMP13 are the cause of metaphyseal anadysplasia type 1 (MANDP1) [MIM:602111]. Metaphyseal anadysplasia consists of an abnormal bone development characterized by severe skeletal changes that, in contrast with the progressive course of most other skeletal dysplasias, resolve spontaneously with age. Clinical characteristics are evident from the first months of life and include slight shortness of stature and a mild varus deformity of the legs. Patients attain a normal stature in adolescence and show improvement or complete resolution of varus deformity of the legs and rhizomelic micromelia.
序列相似性	Belongs to the peptidase M10A family. Contains 4 hemopexin-like domains.
结构域	The conserved cysteine present in the cysteine-switch motif binds the catalytic zinc ion, thus inhibiting the enzyme. The dissociation of the cysteine from the zinc ion upon the activation-peptide release activates the enzyme.

图片



All lanes : Anti-MMP13 antibody (ab39012) at 1/3000 dilution

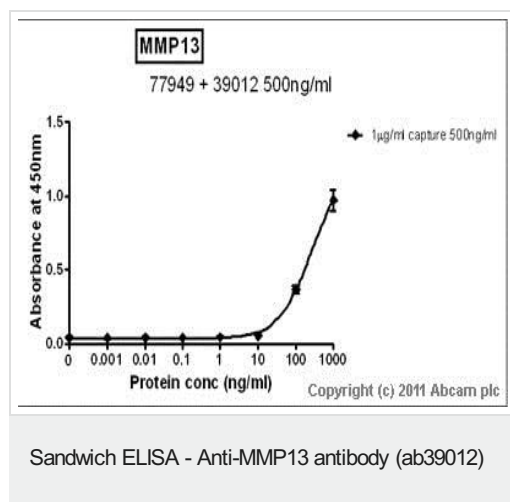
Lane 1 : cell media from human chondrosarcoma (untreated).

Lane 2 : cell media from human chondrosarcoma (IL1 beta treated).

Predicted band size: 54 kDa

Observed band size: 60 kDa

The loading amount is 15 μ l/lane, and the condrosarcoma media was concentrated 40x.



Standard curve for MMP13; dilution range 1pg/ml to 1 μ g/ml using Capture Antibody Mouse monoclonal [181-15A12] to MMP13 (**ab77949**) at 1 μ g/ml and Detector Antibody Rabbit polyclonal to MMP13 - Hinge region (ab39012) at 0.5 μ g/ml.

Please note: All products are "FOR RESEARCH USE ONLY. NOT FOR USE IN DIAGNOSTIC PROCEDURES"

Our Abpromise to you: Quality guaranteed and expert technical support

- Replacement or refund for products not performing as stated on the datasheet
- Valid for 12 months from date of delivery
- Response to your inquiry within 24 hours
- We provide support in Chinese, English, French, German, Japanese and Spanish
- Extensive multi-media technical resources to help you
- We investigate all quality concerns to ensure our products perform to the highest standards

If the product does not perform as described on this datasheet, we will offer a refund or replacement. For full details of the Abpromise, please visit <https://www.abcam.cn/abpromise> or contact our technical team.

Terms and conditions

- Guarantee only valid for products bought direct from Abcam or one of our authorized distributors