

Anti-MMP12 antibody ab231109

3 图像

概述

产品名称	Anti-MMP12抗体
描述	兔多克隆抗体to MMP12
宿主	Rabbit
经测试应用	适用于: WB
种属反应性	与反应: Mouse, Rat
免疫原	Recombinant fragment (His-tag) corresponding to Rat MMP12 aa 350-500 (N terminal). (expressed in E.coli) Database link: Q63341
	 Run BLAST with  Run BLAST with
阳性对照	WB: Rat cerebrum lysate; mouse cerebrum lysate.
常规说明	<p>The Life Science industry has been in the grips of a reproducibility crisis for a number of years. Abcam is leading the way in addressing this with our range of recombinant monoclonal antibodies and knockout edited cell lines for gold-standard validation. Please check that this product meets your needs before purchasing.</p> <p>If you have any questions, special requirements or concerns, please send us an inquiry and/or contact our Support team ahead of purchase. Recommended alternatives for this product can be found below, along with publications, customer reviews and Q&As</p>

性能

形式	Liquid
存放说明	Shipped at 4°C. Store at +4°C short term (1-2 weeks). Upon delivery aliquot. Store at -20°C long term. Avoid freeze / thaw cycle.
存储溶液	pH: 7.40 Preservative: 0.011% Proclin 300 Constituents: 55.77% Glycerol (glycerin, glycerine), 44.219% PBS
纯度	Immunogen affinity purified
纯化说明	Followed by Protein A affinity chromatography.
克隆	多克隆
同种型	IgG

应用

The Abpromise guarantee

Abpromise™承诺保证使用ab231109于以下的经测试应用

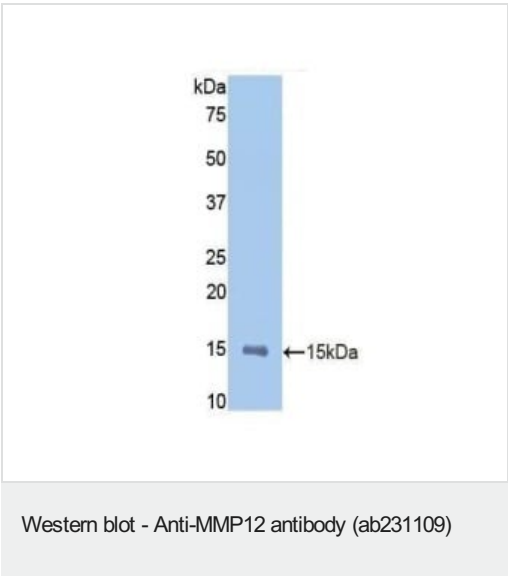
“应用说明”部分 下显示的仅为推荐的起始稀释度;实际最佳的稀释度/浓度应由使用者检定。

应用	Ab评论	说明
WB		Use a concentration of 0.2 - 2 µg/ml. Predicted molecular weight: 54 kDa.

靶标

功能	May be involved in tissue injury and remodeling. Has significant elastolytic activity. Can accept large and small amino acids at the P1' site, but has a preference for leucine. Aromatic or hydrophobic residues are preferred at the P1 site, with small hydrophobic residues (preferably alanine) occupying P3.
组织特异性	Found in alveolar macrophages but not in peripheral blood monocytes.
序列相似性	Belongs to the peptidase M10A family. Contains 4 hemopexin-like domains.
结构域	The conserved cysteine present in the cysteine-switch motif binds the catalytic zinc ion, thus inhibiting the enzyme. The dissociation of the cysteine from the zinc ion upon the activation-peptide release activates the enzyme.
细胞定位	Secreted > extracellular space > extracellular matrix.
形式	The presence of a 22kDa truncated active form of MMP-12 in vitro as well as in vivo due to the internal autolytic cleavage of the C-terminus.

图片



Anti-MMP12 antibody (ab231109) at 2 µg/ml + Recombinant rat MMP12

Developed using the ECL technique.

Predicted band size: 54 kDa



Western blot - Anti-MMP12 antibody (ab231109)

Anti-MMP12 antibody (ab231109) at 2 µg/ml + Mouse cerebrum lysate

Developed using the ECL technique.

Predicted band size: 54 kDa



Western blot - Anti-MMP12 antibody (ab231109)

Anti-MMP12 antibody (ab231109) at 2 µg/ml + Rat cerebrum lysate

Developed using the ECL technique.

Predicted band size: 54 kDa

Please note: All products are "FOR RESEARCH USE ONLY. NOT FOR USE IN DIAGNOSTIC PROCEDURES"

Our Abpromise to you: Quality guaranteed and expert technical support

- Replacement or refund for products not performing as stated on the datasheet
- Valid for 12 months from date of delivery
- Response to your inquiry within 24 hours
- We provide support in Chinese, English, French, German, Japanese and Spanish
- Extensive multi-media technical resources to help you
- We investigate all quality concerns to ensure our products perform to the highest standards

If the product does not perform as described on this datasheet, we will offer a refund or replacement. For full details of the Abpromise, please visit <https://www.abcam.cn/abpromise> or contact our technical team.

Terms and conditions

- Guarantee only valid for products bought direct from Abcam or one of our authorized distributors