

### Anti-MMP10 antibody ab227238

#### 3 图像

#### 概述

---

产品名称	Anti-MMP10抗体
描述	兔多克隆抗体to MMP10
宿主	Rabbit
经测试应用	适用于: WB, IHC-P
种属反应性	与反应: Human
免疫原	Recombinant fragment within Human MMP10 (internal sequence). The exact sequence is proprietary. Database link: <a href="#">P09238</a>
阳性对照	WB: HepG2 whole cell extract and conditioned medium; MMP10-transfected HEK-293T whole cell extract. IHC-P: Human gastric cancer tissue.
常规说明	<p>The Life Science industry has been in the grips of a reproducibility crisis for a number of years. Abcam is leading the way in addressing this with our range of recombinant monoclonal antibodies and knockout edited cell lines for gold-standard validation. Please check that this product meets your needs before purchasing.</p> <p>If you have any questions, special requirements or concerns, please send us an inquiry and/or contact our Support team ahead of purchase. Recommended alternatives for this product can be found below, along with publications, customer reviews and Q&amp;As</p>

#### 性能

---

形式	Liquid
存放说明	Shipped at 4°C. Store at +4°C short term (1-2 weeks). Upon delivery aliquot. Store at -20°C long term. Avoid freeze / thaw cycle.
存储溶液	pH: 7.00 Preservative: 0.01% Thimerosal (merthiolate) Constituents: 1.21% Tris, 0.75% Glycine, 20% Glycerol (glycerin, glycerine)
纯度	Immunogen affinity purified
克隆	多克隆
同种型	IgG

## 应用

**The Abpromise guarantee**      **Abpromise™** 承诺保证使用 ab227238 于以下的经测试应用

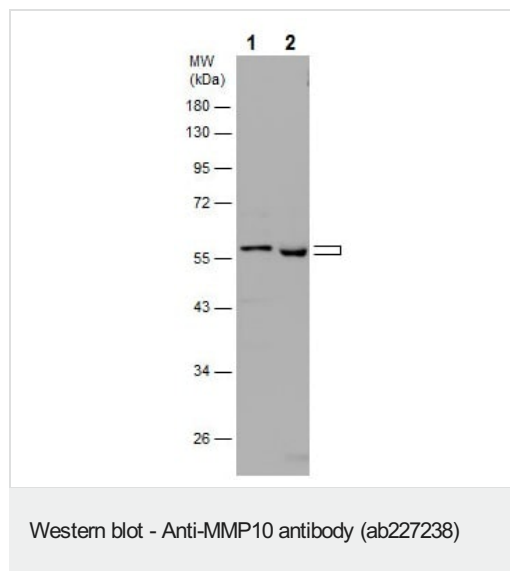
“应用说明”部分 下显示的仅为推荐的起始稀释度;实际最佳的稀释度/浓度应由使用者检定。

应用	Ab评论	说明
WB		1/500 - 1/10000. Predicted molecular weight: 54 kDa.
IHC-P		1/100 - 1/1000.

## 靶标

<b>功能</b>	Can degrade fibronectin, gelatins of type I, III, IV, and V; weakly collagens III, IV, and V. Activates procollagenase.
<b>序列相似性</b>	Belongs to the peptidase M10A family. Contains 4 hemopexin-like domains.
<b>结构域</b>	The conserved cysteine present in the cysteine-switch motif binds the catalytic zinc ion, thus inhibiting the enzyme. The dissociation of the cysteine from the zinc ion upon the activation-peptide release activates the enzyme.
<b>细胞定位</b>	Secreted > extracellular space > extracellular matrix.

## 图片



**All lanes** : Anti-MMP10 antibody (ab227238) at 1/1000 dilution

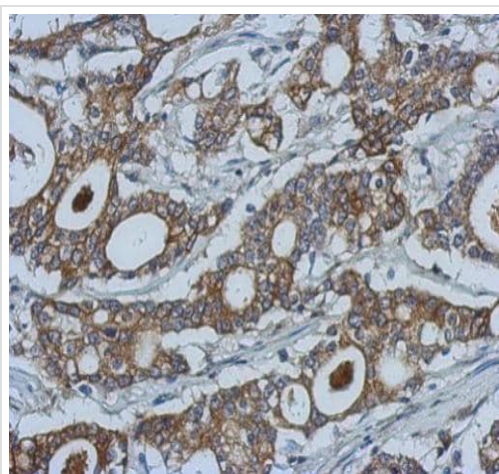
**Lane 1** : HepG2 (human liver hepatocellular carcinoma cell line) whole cell extract

**Lane 2** : HepG2 (human liver hepatocellular carcinoma cell line) conditioned medium

Lysates/proteins at 30 µg per lane.

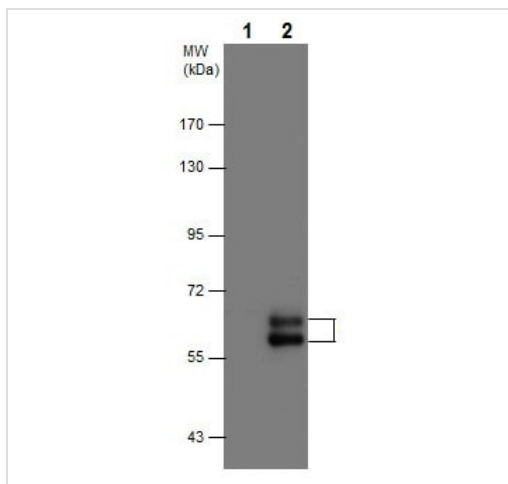
**Predicted band size:** 54 kDa

10% SDS-PAGE gel.



Immunohistochemistry (Formalin/PFA-fixed paraffin-embedded sections) - Anti-MMP10 antibody (ab227238)

Paraffin-embedded human gastric cancer tissue stained for MMP10 using ab227238 at 1/500 dilution in immunohistochemical analysis.



Western blot - Anti-MMP10 antibody (ab227238)

**All lanes :** Anti-MMP10 antibody (ab227238) at 1/5000 dilution

**Lane 1 :** Non-transfected HEK-293T (human epithelial cell line from embryonic kidney transformed with large T antigen) whole cell extract

**Lane 2 :** MMP10-transfected HEK-293T (human epithelial cell line from embryonic kidney transformed with large T antigen) whole cell extract

Lysates/proteins at 30 µg per lane.

**Predicted band size:** 54 kDa

7.5% SDS-PAGE gel.

**Please note:** All products are "FOR RESEARCH USE ONLY. NOT FOR USE IN DIAGNOSTIC PROCEDURES"

#### Our Abpromise to you: Quality guaranteed and expert technical support

- Replacement or refund for products not performing as stated on the datasheet

- Valid for 12 months from date of delivery
- Response to your inquiry within 24 hours
  
- We provide support in Chinese, English, French, German, Japanese and Spanish
- Extensive multi-media technical resources to help you
- We investigate all quality concerns to ensure our products perform to the highest standards

If the product does not perform as described on this datasheet, we will offer a refund or replacement. For full details of the Abpromise, please visit <https://www.abcam.cn/abpromise> or contact our technical team.

### **Terms and conditions**

---

- Guarantee only valid for products bought direct from Abcam or one of our authorized distributors