

Anti-MMACHC/CbIC antibody ab96195

2 References **2 图像**

概述

产品名称	Anti-MMACHC/CbIC抗体
描述	兔多克隆抗体to MMACHC/CbIC
宿主	Rabbit
经测试应用	适用于: WB, ICC/IF
种属反应性	与反应: Human 预测可用于: Mouse, Rat, Cow 
免疫原	Recombinant fragment corresponding to Human MMACHC/CbIC aa 1-188. Database link: NP_056321
阳性对照	293T and Raji whole cell lysates; HeLa cells; A431, H1299, HeLaS3 and HepG2 cell lines
常规说明	<p>The Life Science industry has been in the grips of a reproducibility crisis for a number of years. Abcam is leading the way in addressing this with our range of recombinant monoclonal antibodies and knockout edited cell lines for gold-standard validation. Please check that this product meets your needs before purchasing.</p> <p>If you have any questions, special requirements or concerns, please send us an inquiry and/or contact our Support team ahead of purchase. Recommended alternatives for this product can be found below, along with publications, customer reviews and Q&As</p>

性能

形式	Liquid
存放说明	Shipped at 4°C. Upon delivery aliquot and store at -20°C or -80°C. Avoid repeated freeze / thaw cycles.
存储溶液	pH: 7.00 Preservative: 0.01% Thimerosal (merthiolate) Constituents: 1.21% Tris, 0.75% Glycine, 10% Glycerol (glycerin, glycerine)
纯度	Immunogen affinity purified
克隆	多克隆
同种型	IgG

应用

The Abpromise guarantee **Abpromise™** 承诺保证使用ab96195于以下的经测试应用

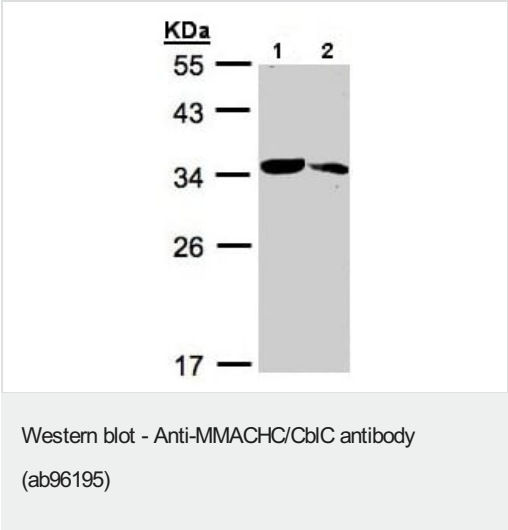
“应用说明”部分 下显示的仅为推荐的起始稀释度;实际最佳的稀释度/浓度应由使用者检定。

应用	Ab评论	说明
WB		1/500 - 1/3000. Predicted molecular weight: 32 kDa.
ICC/IF		1/100 - 1/200.

靶标

功能	May be involved in the binding and intracellular trafficking of cobalamin (vitamin B12).
组织特异性	Widely expressed. Expressed at higher level in fetal liver. Also expressed in spleen, lymph node, thymus and bone marrow. Weakly or not expressed in peripheral blood leukocytes.
通路	Cofactor biosynthesis; adenosylcobalamin biosynthesis.
疾病相关	Defects in MMACHC are the cause of methylmalonic aciduria and homocystinuria type cblC (MMACHC) [MIM:277400]. MMACHC is a disorder of cobalamin metabolism characterized by decreased levels of the coenzymes adenosylcobalamin (AdoCbl) and methylcobalamin (MeCbl). Affected individuals may have developmental, hematologic, neurologic, metabolic, ophthalmologic, and dermatologic clinical findings. Although considered a disease of infancy or childhood, some individuals develop symptoms in adulthood.
序列相似性	Belongs to the MMACHC family.

图片



All lanes : Anti-MMACHC/CblC antibody (ab96195) at 1/1000 dilution

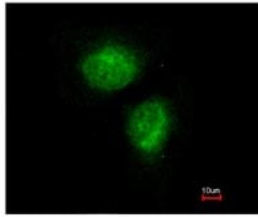
Lane 1 : 293T whole cell lysate

Lane 2 : Raji whole cell lysate

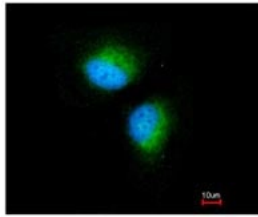
Lysates/proteins at 30 µg per lane.

Predicted band size: 32 kDa

12% SDS-PAGE



ab96195, at 1/100 dilution, staining MMACHC/CblC in paraformaldehyde-fixed HeLa cells by Immunofluorescence. Lower image is merged with DNA probe.



Immunocytochemistry/ Immunofluorescence - Anti-MMACHC/CblC antibody (ab96195)

Please note: All products are "FOR RESEARCH USE ONLY. NOT FOR USE IN DIAGNOSTIC PROCEDURES"

Our Abpromise to you: Quality guaranteed and expert technical support

- Replacement or refund for products not performing as stated on the datasheet
- Valid for 12 months from date of delivery
- Response to your inquiry within 24 hours
- We provide support in Chinese, English, French, German, Japanese and Spanish
- Extensive multi-media technical resources to help you
- We investigate all quality concerns to ensure our products perform to the highest standards

If the product does not perform as described on this datasheet, we will offer a refund or replacement. For full details of the Abpromise, please visit <https://www.abcam.cn/abpromise> or contact our technical team.

Terms and conditions

- Guarantee only valid for products bought direct from Abcam or one of our authorized distributors