


# Anti-MLF1 Interacting Protein/PBIP1 (phospho T78) antibody ab115570

1 图像

### 概述

产品名称	Anti-MLF1 Interacting蛋白/PBIP1 (phospho T78)抗体
描述	兔多克隆抗体to MLF1 Interacting蛋白/PBIP1 (phospho T78)
宿主	Rabbit
经测试应用	适用于: IHC-P
种属反应性	与反应: Human 预测可用于: Mouse, Rat, Cow, Dog, Chimpanzee 
免疫原	Synthetic phosphopeptide conjugated to KLH, corresponding to amino acids surrounding Thr78 of Human MLF1 Interacting Protein/PBIP1.
阳性对照	Human prostate tissue
常规说明	<p>The Life Science industry has been in the grips of a reproducibility crisis for a number of years. Abcam is leading the way in addressing this with our range of recombinant monoclonal antibodies and knockout edited cell lines for gold-standard validation. Please check that this product meets your needs before purchasing.</p> <p>If you have any questions, special requirements or concerns, please send us an inquiry and/or contact our Support team ahead of purchase. Recommended alternatives for this product can be found below, along with publications, customer reviews and Q&amp;As</p>

### 性能

形式	Liquid
存放说明	Shipped at 4°C. Upon delivery aliquot. Store at -20°C or -80°C. Avoid freeze / thaw cycle.
存储溶液	<p>pH: 7.20</p> <p>Preservative: 0.01% Sodium azide</p> <p>Constituents: 0.88% Sodium chloride, 0.424% Potassium phosphate</p>
纯度	Immunogen affinity purified
克隆	多克隆
同种型	IgG

## 应用

### The Abpromise guarantee

**Abpromise™** 承诺保证使用 ab115570 于以下的经测试应用

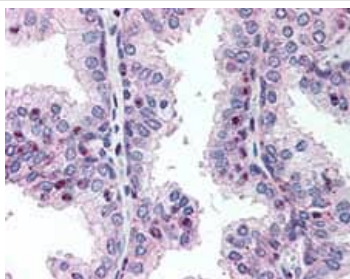
“应用说明”部分 下显示的仅为推荐的起始稀释度; 实际最佳的稀释度/浓度应由使用者检定。

应用	Ab 评论	说明
IHC-P		Use a concentration of 10 µg/ml. Perform heat mediated antigen retrieval with citrate buffer pH 6 before commencing with IHC staining protocol.

## 靶标

功能	Component of the CENPA-NAC (nucleosome-associated) complex, a complex that plays a central role in assembly of kinetochore proteins, mitotic progression and chromosome segregation. The CENPA-NAC complex recruits the CENPA-CAD (nucleosome distal) complex and may be involved in incorporation of newly synthesized CENPA into centromeres. Plays an important role in the correct PLK1 localization to the mitotic kinetochores. A scaffold protein responsible for the initial recruitment and maintenance of the kinetochore PLK1 population until its degradation. Involved in transcriptional repression.
组织特异性	Expressed at high levels in the testis, fetal liver, thymus, bone marrow and at lower levels in the lymph nodes, placenta, colon and spleen. Present in all cell lines examined, including B-cells, T-cells, epithelial cells and fibroblast cells. Expressed at high levels in glioblastoma cell lines.
翻译后修饰	Phosphorylated by PLK1 at Thr-78, creating a self-tethering site that specifically interacts with the polo-box domain of PLK1.
细胞定位	Cytoplasm. Nucleus. Chromosome > centromere > kinetochore. Localizes in the kinetochore domain of centromeres. Colocalizes with PLK1 at the interzone between the inner and the outer kinetochore plates.

## 图片



Human Prostate (formalin-fixed, paraffin-embedded) stained with ab115570 at 10 µg/ml followed by biotinylated goat anti-rabbit IgG secondary antibody, alkaline phosphatase-streptavidin and chromogen.

Immunohistochemistry (Formalin/PFA-fixed paraffin-embedded sections) - Anti-MLF1 Interacting Protein/PBIP1 (phospho T78) antibody (ab115570)

**Please note:** All products are "FOR RESEARCH USE ONLY. NOT FOR USE IN DIAGNOSTIC PROCEDURES"

### **Our Abpromise to you: Quality guaranteed and expert technical support**

---

- Replacement or refund for products not performing as stated on the datasheet
- Valid for 12 months from date of delivery
- Response to your inquiry within 24 hours
  
- We provide support in Chinese, English, French, German, Japanese and Spanish
- Extensive multi-media technical resources to help you
- We investigate all quality concerns to ensure our products perform to the highest standards

If the product does not perform as described on this datasheet, we will offer a refund or replacement. For full details of the Abpromise, please visit <https://www.abcam.cn/abpromise> or contact our technical team.

### **Terms and conditions**

---

- Guarantee only valid for products bought direct from Abcam or one of our authorized distributors