


### Anti-MKK7 antibody [EP1455Y] ab52618

敲除验证 重组 RabMAb

[13 References](#) [5 图像](#)

#### 概述

产品名称	Anti-MKK7抗体[EP1455Y]
描述	兔单克隆抗体[EP1455Y] to MKK7
宿主	Rabbit
经测试应用	适用于: Flow Cyt (Intra), WB, IHC-P
种属反应性	与反应: Human 预测可用于: Mouse, Rat 
免疫原	Synthetic peptide within Human MKK7 aa 400-500 (C terminal). The exact sequence is proprietary.
阳性对照	HeLa cell lysate, human urinary bladder tissue Flow Cyt (intra): MCF7 cells.
常规说明	This product is a recombinant monoclonal antibody, which offers several advantages including: <ul style="list-style-type: none"><li>- High batch-to-batch consistency and reproducibility</li><li>- Improved sensitivity and specificity</li><li>- Long-term security of supply</li><li>- Animal-free production</li></ul> For more information <a href="#">see here</a> . Our RabMAb <sup>®</sup> technology is a patented hybridoma-based technology for making rabbit monoclonal antibodies. For details on our patents, please refer to <a href="#">RabMAb<sup>®</sup> patents</a> .

#### 性能

形式	Liquid
存放说明	Shipped at 4°C. Store at +4°C short term (1-2 weeks). Upon delivery aliquot. Store at -20°C. Avoid freeze / thaw cycle.
存储溶液	pH: 7.20 Preservative: 0.01% Sodium azide Constituents: 59% PBS, 40% Glycerol (glycerin, glycerine), 0.5% BSA
纯度	Protein A purified
克隆	单克隆
克隆编号	EP1455Y

同种型

IgG

## 应用

**The Abpromise guarantee**      **Abpromise™** 承诺保证使用 ab52618 于以下的经测试应用

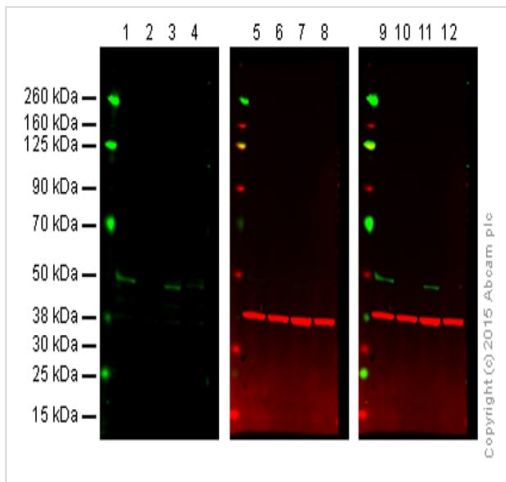
“应用说明”部分 下显示的仅为推荐的起始稀释度;实际最佳的稀释度/浓度应由使用者检定。

应用	Ab评论	说明
Flow Cyt (Intra)		1/100. <b>ab172730</b> - Rabbit monoclonal IgG, is suitable for use as an isotype control with this antibody.
WB		1/10000. Predicted molecular weight: 47 kDa.
IHC-P		Use at an assay dependent concentration. Perform heat mediated antigen retrieval with citrate buffer pH 6 before commencing with IHC staining protocol.

## 靶标

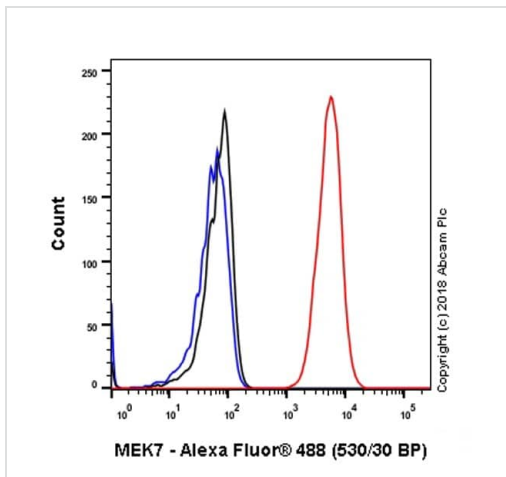
功能	Stress activated, dual specificity kinase that activates the JUN kinases MAPK8/JNK1, MAPK9/JNK2 and MAPK10/JNK3.
组织特异性	Ubiquitous; with highest level of expression in skeletal muscle. Isoform 3 is found at low levels in placenta, fetal liver, and skeletal muscle.
序列相似性	Belongs to the protein kinase superfamily. STE Ser/Thr protein kinase family. MAP kinase kinase subfamily. Contains 1 protein kinase domain.
翻译后修饰	Activated by phosphorylation on Ser/Thr.
细胞定位	Nucleus. Cytoplasm.

## 图片



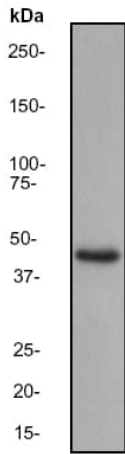
Western blot - Anti-MKK7 antibody [EP1455Y] (ab52618)

**Lanes 1, 5 and 9:** Wild-type HAP1 cell lysate (20  $\mu$ g)  
**Lanes 2, 6 and 10:** MEK7 knockout HAP1 cell lysate (20  $\mu$ g)  
**Lanes 3, 7 and 11:** HeLa cell lysate (20  $\mu$ g)  
**Lanes 4, 8 and 12:** A431 cell lysate (20  $\mu$ g)  
**Lanes 1, 2, 3 and 4:** Green signal from target - ab52618 observed at 47 kDa  
**Lanes 5, 6, 7 and 8:** Red signal from loading control - **ab8245** observed at 37 kDa  
**Lanes 9, 10, 11 and 12:** Merged (red and green) signal  
 ab52618 was shown to specifically react with MEK7 when MEK7 knockout samples were used. Wild-type and MEK7 knockout samples were subjected to SDS-PAGE. ab52618 and **ab8245** (loading control to GAPDH) were diluted 1/10 000 and 1/2000 respectively and incubated overnight at 4°C. Blots were developed with Goat anti-Rabbit IgG H&L (IRDye® 800CW) preadsorbed (**ab216773**) and Goat anti-Mouse IgG H&L (IRDye® 680RD) preadsorbed (**ab216776**) secondary antibodies at 1/10000 dilution for 1 h at room temperature before imaging.



Flow Cytometry (Intracellular) - Anti-MKK7 antibody [EP1455Y] (ab52618)

Intracellular Flow Cytometry analysis of MCF7 (Human breast adenocarcinoma epithelial cell) cells labeling MKK7 with ab52618 at 1/100 dilution (1  $\mu$ g) (Red). Goat anti rabbit IgG (Alexa Fluor® 488, **ab150077**) at 1/2000 dilution was used as the secondary antibody. Cells were fixed with 4% paraformaldehyde. Rabbit monoclonal IgG (**ab172730**) was used as isotype control (Black). Unlabelled control: Cells without incubation with primary antibody and secondary antibody (Blue).



Western blot - Anti-MKK7 antibody [EP1455Y] (ab52618)

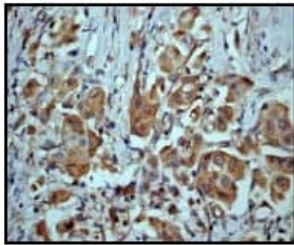
Anti-MKK7 antibody [EP1455Y] (ab52618) at 1/10000 dilution + HeLa cell lysate at 10 µg

**Secondary**

Goat anti-rabbit HRP antibody at 1/2000 dilution

**Predicted band size:** 47 kDa

**Observed band size:** 47 kDa



Immunohistochemistry (Formalin/PFA-fixed paraffin-embedded sections) - Anti-MKK7 antibody [EP1455Y] (ab52618)

Ab52618 at 1/50 dilution staining human bladder tissue; paraffin embedded.

Perform heat mediated antigen retrieval with citrate buffer pH 6 before commencing with IHC staining protocol.

Why choose a recombinant antibody?

 <p><b>Research with confidence</b> Consistent and reproducible results</p>	 <p><b>Long-term and scalable supply</b> Recombinant technology</p>
 <p><b>Success from the first experiment</b> Confirmed specificity</p>	 <p><b>Ethical standards compliant</b> Animal-free production</p>

Anti-MKK7 antibody [EP1455Y] (ab52618)

**Please note:** All products are "FOR RESEARCH USE ONLY. NOT FOR USE IN DIAGNOSTIC PROCEDURES"

**Our Promise to you: Quality guaranteed and expert technical support**

- Replacement or refund for products not performing as stated on the datasheet
- Valid for 12 months from date of delivery
- Response to your inquiry within 24 hours
  
- We provide support in Chinese, English, French, German, Japanese and Spanish
- Extensive multi-media technical resources to help you
- We investigate all quality concerns to ensure our products perform to the highest standards

If the product does not perform as described on this datasheet, we will offer a refund or replacement. For full details of the Abpromise, please visit <https://www.abcam.cn/abpromise> or contact our technical team.

### **Terms and conditions**

---

- Guarantee only valid for products bought direct from Abcam or one of our authorized distributors