

# Anti-Mitofilin antibody [2E4AD5] - Mitochondrial Marker ab110329

★★★★★ [3 Abreviews](#) [47 References](#) [5 图像](#)

### 概述

产品名称	Anti-Mitofilin抗体[2E4AD5] - Mitochondrial Marker
描述	小鼠单克隆抗体[2E4AD5] to Mitofilin - Mitochondrial Marker
宿主	Mouse
经测试应用	适用于: WB, ICC/IF, IHC-P, Flow Cyt
种属反应性	与反应: Mouse, Rat, Cow, Human
免疫原	Tissue, cells or virus. This information is considered to be commercially sensitive.
阳性对照	Human fibroblasts; Human cerebellum tissue; Isolated mitochondria from Human, Bovine, Rat and Mouse hearts, HepG2 lysate; HL60 cells.
常规说明	<p><b>Western blot advice:</b></p> <p>Hydrophobic intrinsic membrane proteins such as core mtDNA-encoded proteins tend to run faster in SDS-PAGE than predicted by their amino acid composition. This is likely due to incomplete unfolding of the protein and a more negative charge:mass ratio.</p> <p>This antibody clone is manufactured by Abcam. If you require a custom buffer formulation or conjugation for your experiments, please contact <a href="mailto:orders@abcam.com">orders@abcam.com</a>.</p> <p>The Life Science industry has been in the grips of a reproducibility crisis for a number of years. Abcam is leading the way in addressing this with our range of recombinant monoclonal antibodies and knockout edited cell lines for gold-standard validation. Please check that this product meets your needs before purchasing.</p> <p>If you have any questions, special requirements or concerns, please send us an inquiry and/or contact our Support team ahead of purchase. Recommended alternatives for this product can be found below, along with publications, customer reviews and Q&amp;As</p> <p>Product was previously marketed under the MitoSciences sub-brand.</p>

### 性能

形式	Liquid
存放说明	Shipped at 4°C. Store at +4°C. Do Not Freeze.
存储溶液	pH: 7.5 Preservative: 0.02% Sodium azide Constituent: HEPES buffered saline

## 纯化说明

ab110329 was produced in vitro using hybridomas grown in serum-free medium, and then purified by biochemical fractionation. Purity: >95% by SDS-PAGE.

## 克隆

单克隆

## 克隆编号

2E4AD5

## 同种型

IgG1

## 轻链类型

kappa

## 应用

### The Abpromise guarantee

**Abpromise™** 承诺保证使用 ab110329 于以下的经测试应用

“应用说明”部分 下显示的仅为推荐的起始稀释度;实际最佳的稀释度/浓度应由使用者检定。

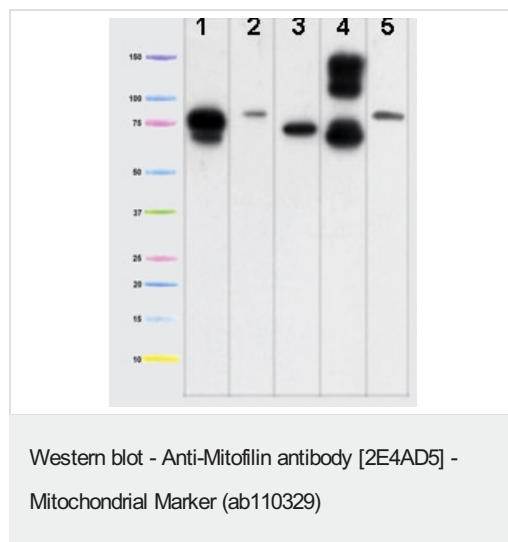
应用	Ab评论	说明
WB	★★★★★ (2)	Use a concentration of 2 µg/ml. Predicted molecular weight: 84 kDa.
ICC/IF		Use a concentration of 1 - 5 µg/ml.
IHC-P		1/100. Perform heat mediated antigen retrieval via the microwave method before commencing with IHC staining protocol.
Flow Cyt		Use a concentration of 1 µg/ml. <b>ab170190</b> - Mouse monoclonal IgG1, is suitable for use as an isotype control with this antibody.

## 靶标

### 细胞定位

Mitochondrion inner membrane.

## 图片



**All lanes** : Anti-Mitofilin antibody [2E4AD5] - Mitochondrial Marker (ab110329) at 2 µg/ml

**Lane 1** : Isolated mitochondria from Human heart at 5 µg

**Lane 2** : Isolated mitochondria from Bovine heart at 1 µg

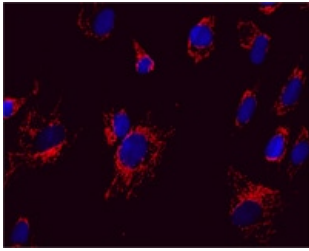
**Lane 3** : Isolated mitochondria from Rat heart at 10 µg

**Lane 4** : Isolated mitochondria from Mouse heart at 10 µg

**Lane 5** : HepG2 cell lysate at 20 µg

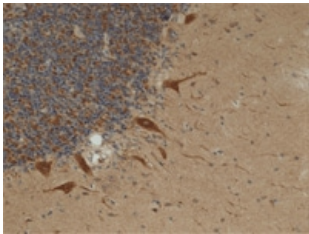
**Predicted band size:** 84 kDa

Extra bands in the mouse sample (lane 4) are due to the reaction of the IgG-specific goat anti-mouse secondary antibody with residual mouse blood in the heart tissue, as it is very difficult to entirely remove the blood from these small organs.



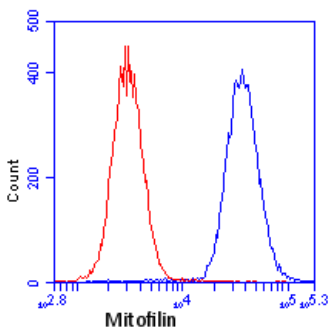
Immunocytochemistry/ Immunofluorescence - Anti-Mitofilin antibody [2E4AD5] - Mitochondrial Marker (ab110329)

Immunocytochemistry analysis using ab110329 at 5µg/ml staining Mitofilin in Cultured Human fibroblasts. (Fixed and permeabilized) followed by a fluorescent goat-anti-mouse IgG.



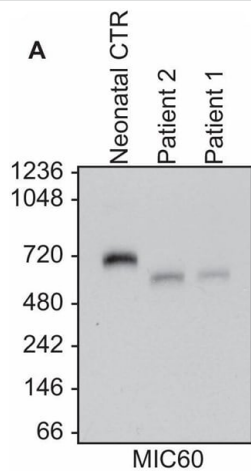
Immunohistochemistry (Formalin/PFA-fixed paraffin-embedded sections) - Anti-Mitofilin antibody [2E4AD5] - Mitochondrial Marker (ab110329)

Immunohistochemical analysis using ab110329 at 1/100 dilution staining Mitofilin in Human cerebellum tissue (Formalin-fixed, Paraffin-embedded).



Flow Cytometry - Anti-Mitofilin antibody [2E4AD5] - Mitochondrial Marker (ab110329)

Flow cytometric analysis using ab110329 at 1µg/ml staining Mitofilin in HL60 cells (blue). Isotype control antibody (red).



Western blot - Anti-Mitofilin antibody [2E4AD5] - Mitochondrial Marker (ab110329)

Image from Guarani V et al., Elife. 2016;5:e17163. Fig 5(A).; doi: 10.7554/eLife.17163. Reproduced under the Creative Commons license <http://creativecommons.org/licenses/by/4.0/>

**All lanes** : Anti-Mitofilin antibody [2E4AD5] - Mitochondrial Marker (ab110329)

**Lane 1** : Control neonatal mitochondria from skin fibroblasts

**Lane 2** : Patient 2 (male) mitochondria from skin fibroblasts

**Lane 3** : Patient 1 (female) mitochondria from skin fibroblasts

**Predicted band size:** 84 kDa

Clinical findings for patients 1 & 2 suggest human neonatal onset mitochondrial encephalopathy with recurrent bouts of liver disease.

**Please note:** All products are "FOR RESEARCH USE ONLY. NOT FOR USE IN DIAGNOSTIC PROCEDURES"

### Our Abpromise to you: Quality guaranteed and expert technical support

- Replacement or refund for products not performing as stated on the datasheet
- Valid for 12 months from date of delivery
- Response to your inquiry within 24 hours
- We provide support in Chinese, English, French, German, Japanese and Spanish
- Extensive multi-media technical resources to help you
- We investigate all quality concerns to ensure our products perform to the highest standards

If the product does not perform as described on this datasheet, we will offer a refund or replacement. For full details of the Abpromise, please visit <https://www.abcam.cn/abpromise> or contact our technical team.

### Terms and conditions

- Guarantee only valid for products bought direct from Abcam or one of our authorized distributors