

# Anti-Mitochondrial Ferritin antibody ab93428

[1 References](#) [1 图像](#)

### 概述

产品名称	Anti-Mitochondrial Ferritin抗体
描述	兔多克隆抗体to Mitochondrial Ferritin
宿主	Rabbit
经测试应用	适用于: WB
种属反应性	与反应: Human
免疫原	Synthetic peptide corresponding to Human Mitochondrial Ferritin aa 50-150 conjugated to keyhole limpet haemocyanin. Database link: <a href="#">Q8N4E7</a> (Peptide available as <a href="#">ab93799</a> )
阳性对照	This antibody gave a positive signal in both Hela and HEK293 whole cell lysates.
常规说明	<p>The Life Science industry has been in the grips of a reproducibility crisis for a number of years. Abcam is leading the way in addressing this with our range of recombinant monoclonal antibodies and knockout edited cell lines for gold-standard validation. Please check that this product meets your needs before purchasing.</p> <p>If you have any questions, special requirements or concerns, please send us an inquiry and/or contact our Support team ahead of purchase. Recommended alternatives for this product can be found below, along with publications, customer reviews and Q&amp;As</p>

### 性能

形式	Liquid
存放说明	Shipped at 4°C. Store at +4°C short term (1-2 weeks). Upon delivery aliquot. Store at -20°C or -80°C. Avoid freeze / thaw cycle.
存储溶液	pH: 7.40 Preservative: 0.02% Sodium azide Constituent: PBS
纯度	Batches of this product that have a concentration < 1mg/ml may have BSA added as a stabilising agent. If you would like information about the formulation of a specific lot, please contact our scientific support team who will be happy to help. Immunogen affinity purified

克隆 多克隆  
同种型 IgG

## 应用

**The Abpromise guarantee** **Abpromise™**承诺保证使用ab93428于以下的经测试应用

“应用说明”部分 下显示的仅为推荐的起始稀释度;实际最佳的稀释度/浓度应由使用者检定。

应用	Ab评论	说明
WB		1/250. Detects a band of approximately 22 kDa (predicted molecular weight: 27 kDa).

## 靶标

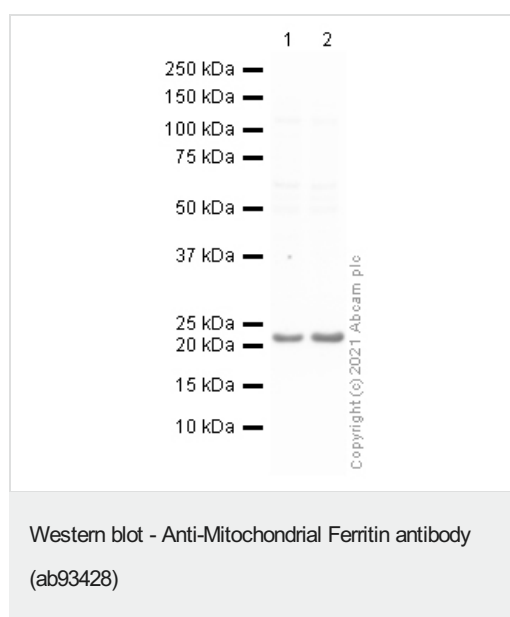
**功能** Stores iron in a soluble, non-toxic, readily available form. Important for iron homeostasis. Has ferroxidase activity. Iron is taken up in the ferrous form and deposited as ferric hydroxides after oxidation.

**组织特异性** Detected in testis and erythroleukemia. Expression is very low or not detectable in brain, colon, heart, kidney, liver, lung, muscle, placental, spleen and small intestine.

**序列相似性** Belongs to the ferritin family.  
Contains 1 ferritin-like diiron domain.

**细胞定位** Mitochondrion.

## 图片



**All lanes** : Anti-Mitochondrial Ferritin antibody (ab93428) at 1  $\mu$ g/ml

**Lane 1** : HeLa whole cell lysate

**Lane 2** : HEK293 whole cell lysate

Lysates/proteins at 10  $\mu$ g per lane.

### Secondary

**All lanes** : Goat polyclonal to Rabbit IgG - H&L - Pre-Adsorbed (HRP) at 1/50000 dilution

Performed under reducing conditions.

**Predicted band size:** 27 kDa

**Exposure time:** 4 minutes

Blocking buffer: 2% BSA

Gel type: MES

**Please note:** All products are "FOR RESEARCH USE ONLY. NOT FOR USE IN DIAGNOSTIC PROCEDURES"

### **Our Abpromise to you: Quality guaranteed and expert technical support**

---

- Replacement or refund for products not performing as stated on the datasheet
- Valid for 12 months from date of delivery
- Response to your inquiry within 24 hours
  
- We provide support in Chinese, English, French, German, Japanese and Spanish
- Extensive multi-media technical resources to help you
- We investigate all quality concerns to ensure our products perform to the highest standards

If the product does not perform as described on this datasheet, we will offer a refund or replacement. For full details of the Abpromise, please visit <https://www.abcam.cn/abpromise> or contact our technical team.

### **Terms and conditions**

---

- Guarantee only valid for products bought direct from Abcam or one of our authorized distributors