

# Anti-Mitochondria antibody [SPM198], prediluted ab17857

**2 References**   [1 图像](#)

### 概述

产品名称	Anti-Mitochondria抗体[SPM198], prediluted
描述	小鼠单克隆抗体[SPM198] to Mitochondria, prediluted
宿主	Mouse
特异性	This antibody recognizes a 60kDa non-glycosylated protein component of mitochondria found in human cells
经测试应用	适用于: IHC-P
种属反应性	与反应: Human
免疫原	Tissue, cells or virus corresponding to Human Mitochondria. Semi-Purified mitochondrial preparation
阳性对照	Liver
常规说明	

ab17857 recognizes a 60kDa non-glycosylated protein component of mitochondria found in human cells. It can be used to stain the mitochondria in human cell or tissue preparations and can be used as a mitochondrial-marker in subcellular fractions. ab17857 also detects the organelles within mitochondria; characteristic ('spaghetti'-like) mitochondrial staining pattern is observed in the cytoplasm of normal and malignant human cells.

The Life Science industry has been in the grips of a reproducibility crisis for a number of years. Abcam is leading the way in addressing this with our range of recombinant monoclonal antibodies and knockout edited cell lines for gold-standard validation. Please check that this product meets your needs before purchasing.

If you have any questions, special requirements or concerns, please send us an inquiry and/or contact our Support team ahead of purchase. Recommended alternatives for this product can be found below, along with publications, customer reviews and Q&As

### 性能

形式	Liquid
存放说明	Shipped at 4°C. Store at +4°C. Do Not Freeze.
存储溶液	pH: 7.2 Preservative: 0.1% Sodium azide Constituents: 0.605% Tris, 1% BSA

纯度	IgG fraction
Primary antibody说明	ab17857 recognizes a 60kDa non-glycosylated protein component of mitochondria found in human cells. It can be used to stain the mitochondria in human cell or tissue preparations and can be used as a mitochondrial-marker in subcellular fractions. ab17857 also detects the organelles within mitochondria; characteristic ('spaghetti'-like) mitochondrial staining pattern is observed in the cytoplasm of normal and malignant human cells.
克隆	单克隆
克隆编号	SPM198
同种型	IgG1
轻链类型	kappa

应用

**The Abpromise guarantee**      **Abpromise™**承诺保证使用ab17857于以下的经测试应用

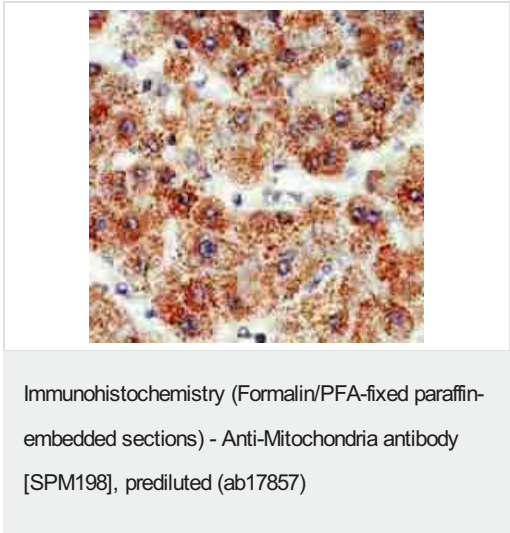
“应用说明”部分 下显示的仅为推荐的起始稀释度;实际最佳的稀释度/浓度应由使用者检定。

应用	Ab评论	说明
IHC-P		1/1. Perform heat mediated antigen retrieval before commencing with IHC staining protocol. Ready-to-use for 30 min at RT.

靶标

相关性	Mitochondria are the power house of the cell. They are distinct organelles with two membranes. Usually they are rod shaped, however they can be round. The outer membrane limits the organelle and the inner membrane is thrown into folds or shelves that project inward and are called "cristae mitochondriales".
细胞定位	Mitochondrial

图片



ab17857 detecting mitochondria in human liver (dilution of ab17857 = ready-to-use for 30min at RT)

**Please note:** All products are "FOR RESEARCH USE ONLY. NOT FOR USE IN DIAGNOSTIC PROCEDURES"

### **Our Abpromise to you: Quality guaranteed and expert technical support**

---

- Replacement or refund for products not performing as stated on the datasheet
- Valid for 12 months from date of delivery
- Response to your inquiry within 24 hours
  
- We provide support in Chinese, English, French, German, Japanese and Spanish
- Extensive multi-media technical resources to help you
- We investigate all quality concerns to ensure our products perform to the highest standards

If the product does not perform as described on this datasheet, we will offer a refund or replacement. For full details of the Abpromise, please visit <https://www.abcam.cn/abpromise> or contact our technical team.

### **Terms and conditions**

---

- Guarantee only valid for products bought direct from Abcam or one of our authorized distributors