

### Anti-MiTF antibody ab20663

★★★★★ [3 Abreviews](#) [39 References](#) [2 图像](#)

#### 概述

产品名称	Anti-MiTF抗体
描述	兔多克隆抗体to MiTF
宿主	Rabbit
经测试应用	<b>适用于:</b> WB <b>不适用于:</b> IHC (PFA fixed)
种属反应性	<b>与反应:</b> Mouse, Rat, Human
免疫原	Synthetic peptide conjugated to KLH derived from within residues 500 to the C-terminus of Human MiTF. 参阅Abcam的 <a href="#">专有抗源政策</a> (Peptide available as <a href="#">ab21454</a> .)
常规说明	<p>The Life Science industry has been in the grips of a reproducibility crisis for a number of years. Abcam is leading the way in addressing this with our range of recombinant monoclonal antibodies and knockout edited cell lines for gold-standard validation. Please check that this product meets your needs before purchasing.</p> <p>If you have any questions, special requirements or concerns, please send us an inquiry and/or contact our Support team ahead of purchase. Recommended alternatives for this product can be found below, along with publications, customer reviews and Q&amp;As</p>

#### 性能

形式	Liquid
存放说明	Shipped at 4°C. Store at +4°C short term (1-2 weeks). Upon delivery aliquot. Store at -20°C or -80°C. Avoid freeze / thaw cycle.
存储溶液	pH: 7.40 Preservative: 0.02% Sodium azide Constituent: PBS
纯度	Immunogen affinity purified
克隆	多克隆
同种型	IgG

Batches of this product that have a concentration < 1mg/ml may have BSA added as a stabilising agent. If you would like information about the formulation of a specific lot, please contact our scientific support team who will be happy to help.

## 应用

### The Abpromise guarantee **Abpromise™** 承诺保证使用ab20663于以下的经测试应用

“应用说明”部分下显示的仅为推荐的起始稀释度;实际最佳的稀释度/浓度应由使用者检定。

应用	Ab评论	说明
<b>WB</b>		Use a concentration of 1 µg/ml. Detects a band of approximately 52 kDa (predicted molecular weight: 52 kDa).

**应用说明** Is unsuitable for IHC (PFA fixed).

## 靶标

**功能** Transcription factor for tyrosinase and tyrosinase-related protein 1. Binds to a symmetrical DNA sequence (E-boxes) (5'-CACGTG-3') found in the tyrosinase promoter. Plays a critical role in the differentiation of various cell types as neural crest-derived melanocytes, mast cells, osteoclasts and optic cup-derived retinal pigment epithelium.

**组织特异性** Isoform M is exclusively expressed in melanocytes and melanoma cells. Isoform A and isoform H are widely expressed in many cell types including melanocytes and retinal pigment epithelium (RPE). Isoform C is expressed in many cell types including RPE but not in melanocyte-lineage cells.

**疾病相关** Defects in MITF are the cause of Waardenburg syndrome type 2A (WS2A) [MIM:193510]. It is a dominant inherited disorder characterized by sensorineural hearing loss and patches of depigmentation. The features show variable expression and penetrance.

Defects in MITF are a cause of Waardenburg syndrome type 2 with ocular albinism (WS2-OA) [MIM:103470]. It is an ocular albinism with sensorineural deafness.

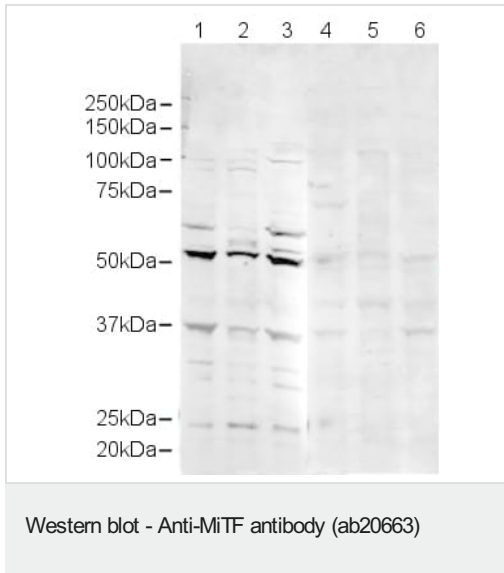
Defects in MITF are the cause of Tietz syndrome (TIETZS) [MIM:103500]. It is an autosomal dominant disorder characterized by generalized hypopigmentation and profound, congenital, bilateral deafness. Penetrance is complete.

**序列相似性** Belongs to the MiT/TFE family.  
Contains 1 basic helix-loop-helix (bHLH) domain.

**翻译后修饰** Phosphorylation at Ser-405 significantly enhances the ability to bind the tyrosinase promoter.

**细胞定位** Nucleus.

## 图片



**All lanes** : Anti-MiTF antibody (ab20663) at 1 µg/ml

**Lane 1** : HeLa whole cell lysate

**Lane 2** : HeLa nuclear lysate

**Lane 3** : A431 whole cell lysate

**Lane 4** : HeLa whole cell lysate with Human MiTF peptide (**ab21454**) at 1 µg/ml

**Lane 5** : HeLa nuclear lysate with Human MiTF peptide (**ab21454**) at 1 µg/ml

**Lane 6** : A431 whole cell lysate with Human MiTF peptide (**ab21454**) at 1 µg/ml

Lysates/proteins at 20 µg per lane.

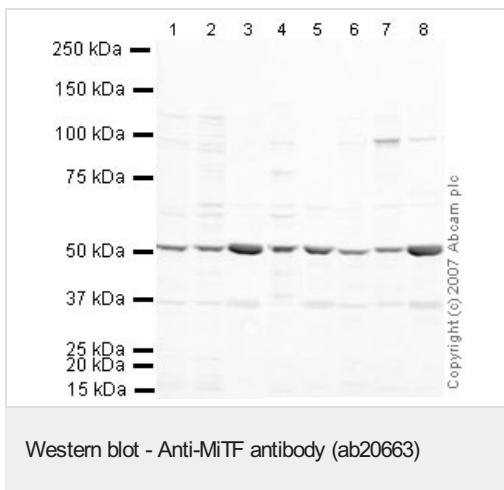
### Secondary

**All lanes** : Alexa Fluor Goat polyclonal to Rabbit IgG (700) at 1/10000 dilution

**Predicted band size:** 52 kDa

**Observed band size:** 52 kDa

**Additional bands at:** 25 kDa, 37 kDa. We are unsure as to the identity of these extra bands.



**All lanes** : Anti-MiTF antibody (ab20663) at 1 µg/ml

**Lane 1** : NIH/3T3 whole cell lysate (**ab7179**)

**Lane 2** : MEF1 (Mouse embryonic fibroblast cell line) Whole Cell Lysate

**Lane 3** : Brain (Mouse) Tissue Lysate

**Lane 4** : Testis (Mouse) Tissue Lysate - normal tissue

**Lane 5** : Spinal Cord (Mouse) Tissue Lysate

**Lane 6** : Ovary (Mouse) Tissue Lysate - normal tissue

**Lane 7** : PC12 (Rat adrenal pheochromocytoma cell line) Whole Cell Lysate

**Lane 8** : Brain (Rat) Tissue Lysate - normal tissue

Lysates/proteins at 10 µg per lane.

**Secondary**

**All lanes** : IRDye 680 Conjugated Goat Anti-Rabbit IgG (H+L) at  
1/10000 dilution

Performed under reducing conditions.

**Predicted band size:** 52 kDa

**Observed band size:** 52 kDa

**Please note:** All products are "FOR RESEARCH USE ONLY. NOT FOR USE IN DIAGNOSTIC PROCEDURES"

**Our Abpromise to you: Quality guaranteed and expert technical support**

---

- Replacement or refund for products not performing as stated on the datasheet
- Valid for 12 months from date of delivery
- Response to your inquiry within 24 hours
  
- We provide support in Chinese, English, French, German, Japanese and Spanish
- Extensive multi-media technical resources to help you
- We investigate all quality concerns to ensure our products perform to the highest standards

If the product does not perform as described on this datasheet, we will offer a refund or replacement. For full details of the Abpromise, please visit <https://www.abcam.cn/abpromise> or contact our technical team.

**Terms and conditions**

---

- Guarantee only valid for products bought direct from Abcam or one of our authorized distributors