

Anti-Mipu1 antibody ab106432

[2 References](#) [3 图像](#)

概述

产品名称	Anti-Mipu1 抗体
描述	兔多克隆抗体 to Mipu1
宿主	Rabbit
经测试应用	适用于: ICC/IF, IHC-P, WB
种属反应性	与反应: Human
免疫原	Synthetic peptide corresponding to Human Mipu1 (N terminal). Database link: Q5HYK9
阳性对照	WB: Human heart tissue lysate IHC-P: Human brain tissue
常规说明	<p>The Life Science industry has been in the grips of a reproducibility crisis for a number of years. Abcam is leading the way in addressing this with our range of recombinant monoclonal antibodies and knockout edited cell lines for gold-standard validation. Please check that this product meets your needs before purchasing.</p> <p>If you have any questions, special requirements or concerns, please send us an inquiry and/or contact our Support team ahead of purchase. Recommended alternatives for this product can be found below, along with publications, customer reviews and Q&As</p>

性能

形式	Liquid
存放说明	Shipped at 4°C. Store at +4°C short term (1-2 weeks). Upon delivery aliquot. Store at -20°C. Avoid freeze / thaw cycle.
存储溶液	pH: 7.2 Preservative: 0.02% Sodium azide Constituent: PBS
纯度	Immunogen affinity purified
克隆	多克隆
同种型	IgG

应用

The Abpromise guarantee

Abpromise™ 承诺保证使用ab106432于以下的经测试应用

“应用说明”部分 下显示的仅为推荐的起始稀释度;实际最佳的稀释度/浓度应由使用者检定。

应用	Ab评论	说明
ICC/IF		Use a concentration of 20 µg/ml.
IHC-P		Use a concentration of 2.5 - 20 µg/ml.
WB		Use a concentration of 1 - 2 µg/ml. Predicted molecular weight: 70 kDa.

靶标

功能

May be involved in transcriptional regulation.

序列相似性

Belongs to the krueppel C2H2-type zinc-finger protein family.

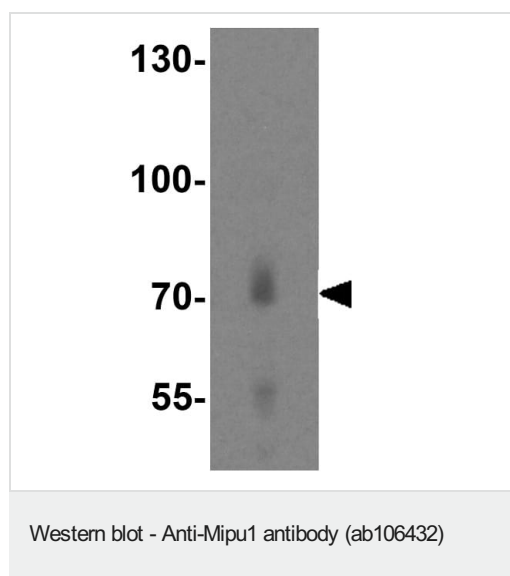
Contains 15 C2H2-type zinc fingers.

Contains 1 KRAB domain.

细胞定位

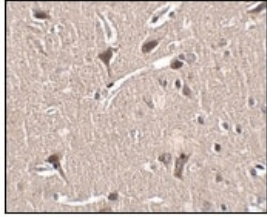
Nucleus.

图片



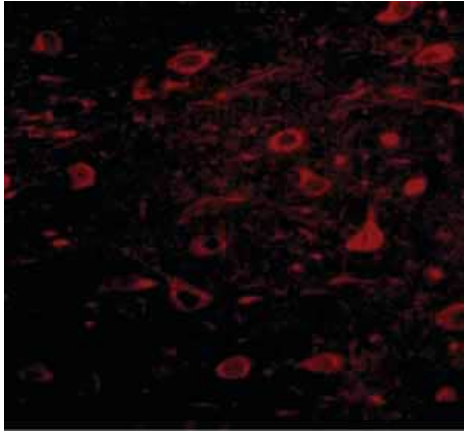
Anti-Mipu1 antibody (ab106432) at 1 µg/ml + Human heart tissue lysate

Predicted band size: 70 kDa



ab106432, at 2.5 µg/ml, staining Mipu1 in paraffin embedded Human brain tissue by Immunohistochemistry.

Immunohistochemistry (Formalin/PFA-fixed paraffin-embedded sections) - Anti-Mipu1 antibody (ab106432)



Immunohistochemical analysis of human brain tissue labelling Mipu1 with ab106432 at 20 ug/mL.

Immunocytochemistry/ Immunofluorescence - Anti-Mipu1 antibody (ab106432)

Please note: All products are "FOR RESEARCH USE ONLY. NOT FOR USE IN DIAGNOSTIC PROCEDURES"

Our Abpromise to you: Quality guaranteed and expert technical support

- Replacement or refund for products not performing as stated on the datasheet
- Valid for 12 months from date of delivery
- Response to your inquiry within 24 hours
- We provide support in Chinese, English, French, German, Japanese and Spanish
- Extensive multi-media technical resources to help you
- We investigate all quality concerns to ensure our products perform to the highest standards

If the product does not perform as described on this datasheet, we will offer a refund or replacement. For full details of the Abpromise, please visit <https://www.abcam.cn/abpromise> or contact our technical team.

Terms and conditions

- Guarantee only valid for products bought direct from Abcam or one of our authorized distributors