

# Anti-MIEF2 antibody ab101350

★★★★☆ [1 Abreviews](#) [2 References](#) [1 图像](#)

### 概述

产品名称	Anti-MIEF2抗体
描述	兔多克隆抗体to MIEF2
宿主	Rabbit
经测试应用	适用于: WB
种属反应性	与反应: Human
免疫原	Recombinant fragment corresponding to Human MIEF2 aa 299-441. (AAH14973)
阳性对照	293T, A431, Jurkat and Raji whole cell lysates.
常规说明	<p>The Life Science industry has been in the grips of a reproducibility crisis for a number of years. Abcam is leading the way in addressing this with our range of recombinant monoclonal antibodies and knockout edited cell lines for gold-standard validation. Please check that this product meets your needs before purchasing.</p> <p>If you have any questions, special requirements or concerns, please send us an inquiry and/or contact our Support team ahead of purchase. Recommended alternatives for this product can be found below, along with publications, customer reviews and Q&amp;As</p>

### 性能

形式	Liquid
存放说明	Shipped at 4°C. Upon delivery aliquot and store at -20°C or -80°C. Avoid repeated freeze / thaw cycles.
存储溶液	pH: 7.00 Preservative: 0.01% Thimerosal (merthiolate) Constituents: 1.21% Tris, 0.75% Glycine, 20% Glycerol (glycerin, glycerine)
纯度	Immunogen affinity purified
克隆	多克隆
同种型	IgG

### 应用

The Abpromise guarantee

**Abpromise™** 承诺保证使用ab101350于以下的经测试应用

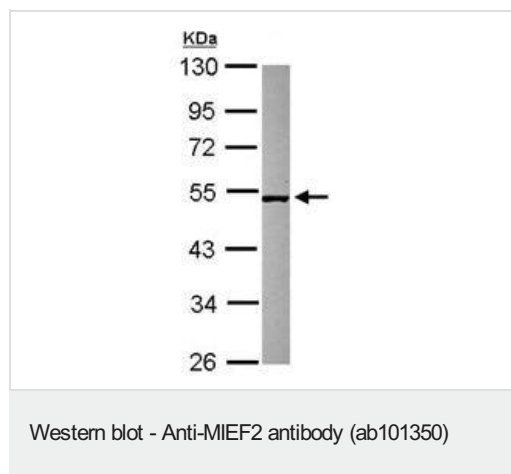
“应用说明”部分 下显示的仅为推荐的起始稀释度;实际最佳的稀释度/浓度应由使用者检定。

应用	Ab评论	说明
WB	★★★★★ (1)	1/500 - 1/3000. Predicted molecular weight: 49 kDa.

## 靶标

功能	Mitochondrial outer membrane protein which regulates mitochondrial fission. Promotes the recruitment and association of the fission mediator dynamin-related protein 1 (DNM1L) to the mitochondrial surface independently of the mitochondrial fission FIS1 and MFF proteins. Regulates DNM1L GTPase activity.
组织特异性	Expressed in all tissues tested with highest expression in heart and skeletal muscle.
序列相似性	Belongs to the MID49/MID51 family.
细胞定位	Mitochondrion outer membrane. Colocalizes with DNM1L at mitochondrial membrane. Forms foci and rings around mitochondria.

## 图片



Anti-MIEF2 antibody (ab101350) at 1/500 dilution + Raji whole cell lysate at 30 µg

**Predicted band size:** 49 kDa

10% SDS PAGE

**Please note:** All products are "FOR RESEARCH USE ONLY. NOT FOR USE IN DIAGNOSTIC PROCEDURES"

## Our Abpromise to you: Quality guaranteed and expert technical support

- Replacement or refund for products not performing as stated on the datasheet
- Valid for 12 months from date of delivery
- Response to your inquiry within 24 hours
- We provide support in Chinese, English, French, German, Japanese and Spanish
- Extensive multi-media technical resources to help you
- We investigate all quality concerns to ensure our products perform to the highest standards

If the product does not perform as described on this datasheet, we will offer a refund or replacement. For full details of the Abpromise, please visit <https://www.abcam.cn/abpromise> or contact our technical team.

## Terms and conditions

---

- Guarantee only valid for products bought direct from Abcam or one of our authorized distributors