


# Anti-METTL7B antibody ab110134

[2 References](#) [3 图像](#)

### 概述

产品名称	Anti-METTL7B抗体
描述	兔多克隆抗体to METTL7B
宿主	Rabbit
经测试应用	适用于: ELISA, WB, IHC-P
种属反应性	与反应: Rat, Human 预测可用于: Mouse 
免疫原	A 16 amino acid synthetic peptide from near the C terminus of Human METTL7B.
常规说明	<p>The Life Science industry has been in the grips of a reproducibility crisis for a number of years. Abcam is leading the way in addressing this with our range of recombinant monoclonal antibodies and knockout edited cell lines for gold-standard validation. Please check that this product meets your needs before purchasing.</p> <p>If you have any questions, special requirements or concerns, please send us an inquiry and/or contact our Support team ahead of purchase. Recommended alternatives for this product can be found below, along with publications, customer reviews and Q&amp;As</p>

### 性能

形式	Liquid
存放说明	Shipped at 4°C. Store at +4°C short term (1-2 weeks). Upon delivery aliquot. Store at -20°C. Avoid freeze / thaw cycle.
存储溶液	pH: 7.4 Preservative: 0.02% Sodium azide Constituent: 99% PBS
纯度	Protein A purified
克隆	多克隆
同种型	IgG

### 应用

The Abpromise guarantee

**Abpromise™** 承诺保证使用ab110134于以下的经测试应用

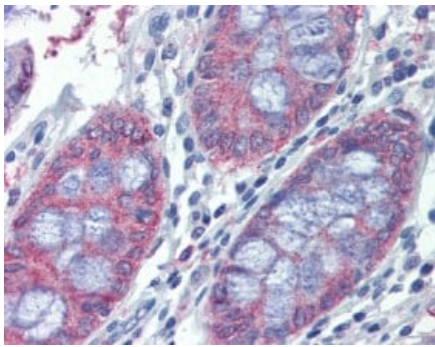
“应用说明”部分 下显示的仅为推荐的起始稀释度;实际最佳的稀释度/浓度应由使用者检定。

应用	Ab评论	说明
ELISA		Use at an assay dependent concentration.
WB		Use a concentration of 2 - 4 µg/ml. Predicted molecular weight: 28 kDa.
IHC-P		Use a concentration of 10 µg/ml.

## 靶标

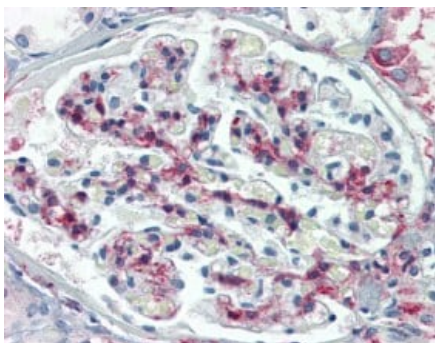
功能	Probable methyltransferase.
序列相似性	Belongs to the methyltransferase superfamily.

## 图片



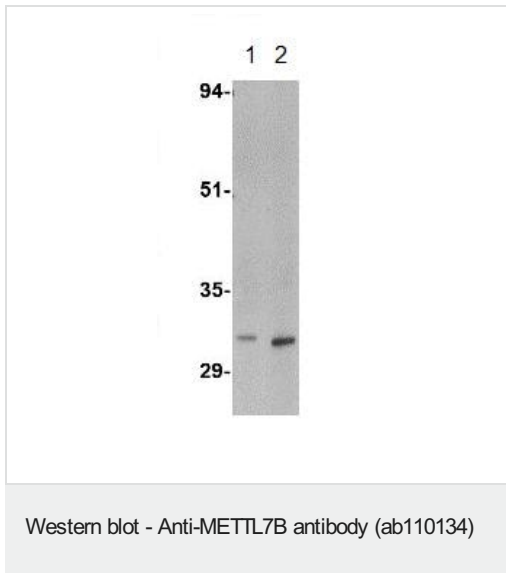
ab110134 at 10 µg/ml staining METTL7B in Formalin-Fixed, Paraffin-Embedded Human Colon tissue by Immunohistochemistry.

Immunohistochemistry (Formalin/PFA-fixed paraffin-embedded sections) - Anti-METTL7B antibody (ab110134)



ab110134 at 10 µg/ml staining METTL7B in Formalin-Fixed, Paraffin-Embedded Human Kidney tissue by Immunohistochemistry.

Immunohistochemistry (Formalin/PFA-fixed paraffin-embedded sections) - Anti-METTL7B antibody (ab110134)



**Lane 1** : Anti-METTL7B antibody (ab110134) at 2 µg/ml

**Lane 2** : Anti-METTL7B antibody (ab110134) at 4 µg/ml

**All lanes** : Rat spleen tissue lysate

**Predicted band size:** 28 kDa

**Please note:** All products are "FOR RESEARCH USE ONLY. NOT FOR USE IN DIAGNOSTIC PROCEDURES"

### **Our Abpromise to you: Quality guaranteed and expert technical support**

---

- Replacement or refund for products not performing as stated on the datasheet
- Valid for 12 months from date of delivery
- Response to your inquiry within 24 hours
- We provide support in Chinese, English, French, German, Japanese and Spanish
- Extensive multi-media technical resources to help you
- We investigate all quality concerns to ensure our products perform to the highest standards

If the product does not perform as described on this datasheet, we will offer a refund or replacement. For full details of the Abpromise, please visit <https://www.abcam.cn/abpromise> or contact our technical team.

### **Terms and conditions**

---

- Guarantee only valid for products bought direct from Abcam or one of our authorized distributors