

Anti-Metabotropic Glutamate Receptor 5 antibody ab27190

★★★★★ [1 Abreviews](#) [8 References](#) [1 图像](#)

概述

产品名称	Anti-Metabotropic Glutamate Receptor 5抗体
描述	兔多克隆抗体to Metabotropic Glutamate Receptor 5
宿主	Rabbit
经测试应用	适用于: IHC-P 不适用于: ICC
种属反应性	与反应: Human 预测可用于: Rabbit 
免疫原	Synthetic peptide within Human Metabotropic Glutamate Receptor 5 aa 1150 to the C-terminus. The exact sequence is proprietary. Database link: P41594
阳性对照	IHC: human brain tissue.
常规说明	This product is FOR RESEARCH USE ONLY. For commercial use, please contact partnerships@abcam.com. The Life Science industry has been in the grips of a reproducibility crisis for a number of years. Abcam is leading the way in addressing this with our range of recombinant monoclonal antibodies and knockout edited cell lines for gold-standard validation. Please check that this product meets your needs before purchasing. If you have any questions, special requirements or concerns, please send us an inquiry and/or contact our Support team ahead of purchase. Recommended alternatives for this product can be found below, along with publications, customer reviews and Q&As

性能

形式	Liquid
存放说明	Shipped at 4°C. Upon delivery aliquot and store at -20°C. Avoid freeze / thaw cycles.
存储溶液	pH: 7.60 Preservative: 0.1% Sodium azide Constituents: PBS, 1% BSA
纯度	Immunogen affinity purified
纯化说明	This antibody is an affinity purified IgG.

克隆 多克隆
同种型 IgG

应用

The Abpromise guarantee **Abpromise™**承诺保证使用ab27190于以下的经测试应用

“应用说明”部分 下显示的仅为推荐的起始稀释度;实际最佳的稀释度/浓度应由使用者检定。

应用	Ab评论	说明
IHC-P		1/50. Perform heat mediated antigen retrieval before commencing with IHC staining protocol.

应用说明 Is unsuitable for ICC.

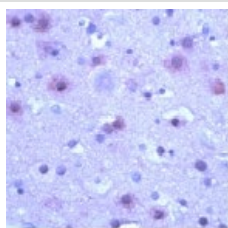
靶标

功能 G-protein coupled receptor for glutamate. Ligand binding causes a conformation change that triggers signaling via guanine nucleotide-binding proteins (G proteins) and modulates the activity of down-stream effectors. Signaling activates a phosphatidylinositol-calcium second messenger system and generates a calcium-activated chloride current. Plays an important role in the regulation of synaptic plasticity and the modulation of the neural network activity.

序列相似性 Belongs to the G-protein coupled receptor 3 family.

细胞定位 Cell membrane.

图片



Ab27190, at a dilution of 1/50, staining mGluR5 in Paraffin embedded formalin fixed human brain tissue section.

Immunohistochemistry (Formalin/PFA-fixed paraffin-embedded sections) - Anti-Metabotropic Glutamate Receptor 5 antibody (ab27190)

Please note: All products are "FOR RESEARCH USE ONLY. NOT FOR USE IN DIAGNOSTIC PROCEDURES"

Our Abpromise to you: Quality guaranteed and expert technical support

- Replacement or refund for products not performing as stated on the datasheet
- Valid for 12 months from date of delivery

- Response to your inquiry within 24 hours
- We provide support in Chinese, English, French, German, Japanese and Spanish
- Extensive multi-media technical resources to help you
- We investigate all quality concerns to ensure our products perform to the highest standards

If the product does not perform as described on this datasheet, we will offer a refund or replacement. For full details of the Abpromise, please visit <https://www.abcam.cn/abpromise> or contact our technical team.

Terms and conditions

- Guarantee only valid for products bought direct from Abcam or one of our authorized distributors