

### Anti-Met Enkephalin antibody ab22620

★★★★☆ [2 Abreviews](#) [2 References](#) [2 图像](#)

#### 概述

产品名称	Anti-Met Enkephalin抗体
描述	兔多克隆抗体to Met Enkephalin
宿主	Rabbit
特异性	Recognizes methionine enkephalin in a wide range of species.
经测试应用	<b>适用于:</b> ICC/IF, IHC-P
种属反应性	<b>与反应:</b> Human
免疫原	Synthetic peptide corresponding to Met Enkephalin conjugated to keyhole limpet haemocyanin (Glutaraldehyde). The conjugate was dialysed to remove excess conjugating agent prior to immunisation. Sequence: YGGF M  Database link: <a href="#">P01210</a> <a href="#">Run BLAST with</a> <a href="#">Run BLAST with</a>
阳性对照	Typical test tissues included rat and human brain, rat spinal cord, pig duodenum, guinea pig ileum (enteric nervous system) and human phaeochromocytoma (adrenomedullary tumour)
常规说明	The Life Science industry has been in the grips of a reproducibility crisis for a number of years. Abcam is leading the way in addressing this with our range of recombinant monoclonal antibodies and knockout edited cell lines for gold-standard validation. Please check that this product meets your needs before purchasing.  If you have any questions, special requirements or concerns, please send us an inquiry and/or contact our Support team ahead of purchase. Recommended alternatives for this product can be found below, along with publications, customer reviews and Q&As

#### 性能

形式	Liquid
存放说明	Shipped at 4°C. Upon delivery aliquot and store at -20°C. Avoid freeze / thaw cycles.
存储溶液	Preservative: 0.01% Sodium azide Constituent: Whole serum
纯度	Whole antiserum

克隆 多克隆  
同种型 IgG

## 应用

**The Abpromise guarantee** **Abpromise™**承诺保证使用ab22620于以下的经测试应用

“应用说明”部分 下显示的仅为推荐的起始稀释度;实际最佳的稀释度/浓度应由使用者检定。

应用	Ab评论	说明
ICC/IF		1/1000.
IHC-P		Use at an assay dependent concentration.

## 靶标

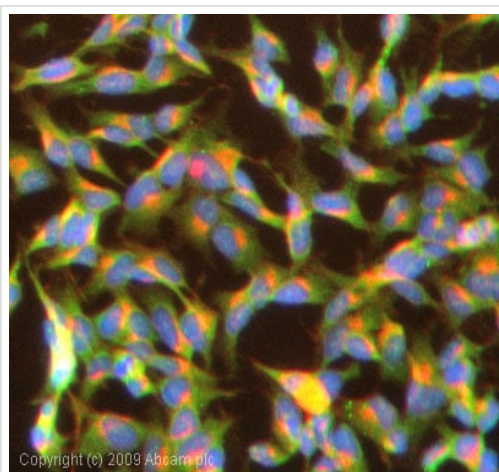
**功能** Met- and Leu-enkephalins compete with and mimic the effects of opiate drugs. They play a role in a number of physiologic functions, including pain perception and responses to stress. PENK(114-133) and PENK(237-258) increase glutamate release in the striatum. PENK(114-133) decreases GABA concentration in the striatum.

**序列相似性** Belongs to the opioid neuropeptide precursor family.

**翻译后修饰** The N-terminal domain contains 6 conserved cysteines thought to be involved in disulfide bonding and/or processing.

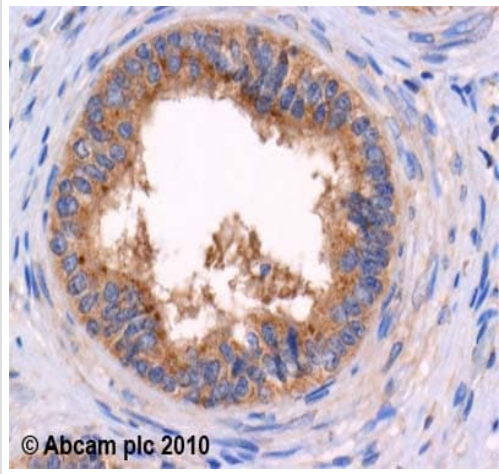
**细胞定位** Secreted.

## 图片



ICC/IF image of ab22620 stained SHSY5Y cells. The cells were 100% methanol fixed (5 min) and then incubated in 1%BSA / 10% normal goat serum / 0.3M glycine in 0.1% PBS-Tween for 1h to permeabilise the cells and block non-specific protein-protein interactions. The cells were then incubated with the antibody (ab22620, 1/1000 dilution) overnight at +4°C. The secondary antibody (green) was Alexa Fluor® 488 goat anti-rabbit IgG (H+L) used at a 1/1000 dilution for 1h. Alexa Fluor® 594 WGA was used to label plasma membranes (red) at a 1/200 dilution for 1h. DAPI was used to stain the cell nuclei (blue) at a concentration of 1.43µM.

Immunocytochemistry/ Immunofluorescence - Anti-Met Enkephalin antibody (ab22620)



Immunohistochemistry (Formalin/PFA-fixed paraffin-embedded sections) - Anti-Met Enkephalin antibody (ab22620)

ab22620 (4µg/ml) staining met enkephalin in human testis using an automated system (DAKO Autostainer Plus). Using this protocol there is cytoplasmic staining of seminal vesicles.

Sections were rehydrated and antigen retrieved with the Dako 3 in 1 AR buffer EDTA pH 9.0 in a DAKO PT link. Slides were peroxidase blocked in 3% H<sub>2</sub>O<sub>2</sub> in methanol for 10 mins. They were then blocked with Dako Protein block for 10 minutes (containing casein 0.25% in PBS) then incubated with primary antibody for 20 min and detected with Dako Envision Flex amplification kit for 30 minutes. Colorimetric detection was completed with Diaminobenzidine for 5 minutes. Slides were counterstained with Haematoxylin and coverslipped under DePeX. Please note that, for manual staining, optimization of primary antibody concentration and incubation time is recommended. Signal amplification may be required.

**Please note:** All products are "FOR RESEARCH USE ONLY. NOT FOR USE IN DIAGNOSTIC PROCEDURES"

### Our Abpromise to you: Quality guaranteed and expert technical support

---

- Replacement or refund for products not performing as stated on the datasheet
- Valid for 12 months from date of delivery
- Response to your inquiry within 24 hours
- We provide support in Chinese, English, French, German, Japanese and Spanish
- Extensive multi-media technical resources to help you
- We investigate all quality concerns to ensure our products perform to the highest standards

If the product does not perform as described on this datasheet, we will offer a refund or replacement. For full details of the Abpromise, please visit <https://www.abcam.cn/abpromise> or contact our technical team.

### Terms and conditions

---

- Guarantee only valid for products bought direct from Abcam or one of our authorized distributors