


Anti-Met (c-Met) (phospho Y1356) antibody ab73992

[4 References](#) [1 图像](#)

概述

产品名称	Anti-Met (c-Met) (phospho Y1356)抗体
描述	兔多克隆抗体to Met (c-Met) (phospho Y1356)
宿主	Rabbit
经测试应用	适用于: WB
种属反应性	与反应: Mouse 预测可用于: Rat 
免疫原	Synthetic peptide corresponding to Human Met (c-Met) (phospho Y1356).
常规说明	<p>The Life Science industry has been in the grips of a reproducibility crisis for a number of years. Abcam is leading the way in addressing this with our range of recombinant monoclonal antibodies and knockout edited cell lines for gold-standard validation. Please check that this product meets your needs before purchasing.</p> <p>If you have any questions, special requirements or concerns, please send us an inquiry and/or contact our Support team ahead of purchase. Recommended alternatives for this product can be found below, along with publications, customer reviews and Q&As</p>

性能

形式	Liquid
存放说明	Shipped at 4°C. Upon delivery aliquot and store at -20°C. Avoid freeze / thaw cycles.
存储溶液	pH: 7.40 Preservative: 0.02% Sodium azide Constituents: 50% Glycerol (glycerin, glycerine), 0.87% Sodium chloride, PBS Without Mg ²⁺ and Ca ²⁺
纯度	Immunogen affinity purified
纯化说明	The antibody against non-phosphopeptide was removed by chromatography using non-phosphopeptide corresponding to the phosphorylation site.
克隆	多克隆
同种型	IgG

应用

The Abpromise guarantee **Abpromise™**承诺保证使用ab73992于以下的经测试应用

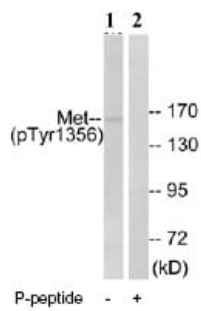
“应用说明”部分 下显示的仅为推荐的起始稀释度;实际最佳的稀释度/浓度应由使用者检定。

应用	Ab评论	说明
WB		1/500 - 1/1000. Detects a band of approximately 156 kDa (predicted molecular weight: 156 kDa).

靶标

功能	Receptor for hepatocyte growth factor and scatter factor. Has a tyrosine-protein kinase activity. Functions in cell proliferation, scattering, morphogenesis and survival.
疾病相关	<p>Note=Activation of MET after rearrangement with the TPR gene produces an oncogenic protein.</p> <p>Note=Defects in MET may be associated with gastric cancer.</p> <p>Defects in MET are a cause of hepatocellular carcinoma (HCC) [MIM:114550].</p> <p>Defects in MET are a cause of renal cell carcinoma papillary (RCCP) [MIM:605074]. It is a subtype of renal cell carcinoma tending to show a tubulo-papillary architecture formed by numerous, irregular, finger-like projections of connective tissue. Renal cell carcinoma is a heterogeneous group of sporadic or hereditary carcinoma derived from cells of the proximal renal tubular epithelium. It is subclassified into common renal cell carcinoma (clear cell, non-papillary carcinoma), papillary renal cell carcinoma, chromophobe renal cell carcinoma, collecting duct carcinoma with medullary carcinoma of the kidney, and unclassified renal cell carcinoma.</p> <p>Note=A common allele in the promoter region of the MET shows genetic association with susceptibility to autism in some families. Functional assays indicate a decrease in MET promoter activity and altered binding of specific transcription factor complexes.</p> <p>Note=MET activating mutations may be involved in the development of a highly malignant, metastatic syndrome known as cancer of unknown primary origin (CUP) or primary occult malignancy. Systemic neoplastic spread is generally a late event in cancer progression. However, in some instances, distant dissemination arises at a very early stage, so that metastases reach clinical relevance before primary lesions. Sometimes, the primary lesions cannot be identified in spite of the progresses in the diagnosis of malignancies.</p>
序列相似性	<p>Belongs to the protein kinase superfamily. Tyr protein kinase family.</p> <p>Contains 3 IPT/TIG domains.</p> <p>Contains 1 protein kinase domain.</p> <p>Contains 1 Sema domain.</p>
结构域	The kinase domain is involved in SPSB1 binding.
翻译后修饰	Dephosphorylated by PTPRJ at Tyr-1349 and Tyr-1365.
细胞定位	Membrane.

图片



Western blot - Anti-Met (c-Met) (phospho Y1356) antibody (ab73992)

All lanes : Anti-Met (c-Met) (phospho Y1356) antibody (ab73992) at 1/500 dilution

Lane 1 : extracts from 3T3 cells

Lane 2 : extracts from 3T3 cells with immunising phosphopeptide at 10 µg

Lysates/proteins at 30 µg per lane.

Predicted band size: 156 kDa

Observed band size: 156 kDa

Please note: All products are "FOR RESEARCH USE ONLY. NOT FOR USE IN DIAGNOSTIC PROCEDURES"

Our Abpromise to you: Quality guaranteed and expert technical support

- Replacement or refund for products not performing as stated on the datasheet
- Valid for 12 months from date of delivery
- Response to your inquiry within 24 hours
- We provide support in Chinese, English, French, German, Japanese and Spanish
- Extensive multi-media technical resources to help you
- We investigate all quality concerns to ensure our products perform to the highest standards

If the product does not perform as described on this datasheet, we will offer a refund or replacement. For full details of the Abpromise, please visit <https://www.abcam.cn/abpromise> or contact our technical team.

Terms and conditions

- Guarantee only valid for products bought direct from Abcam or one of our authorized distributors