


Product datasheet

Anti-Mesothelin antibody [SP74] - C-terminal, prediluted ab228144

重组 RabMAb

4 图像

概述

产品名称	Anti-Mesothelin抗体[SP74] - C-terminal, prediluted
描述	兔单克隆抗体[SP74] to Mesothelin - C-terminal, prediluted
宿主	Rabbit
经测试应用	适用于: IHC-P
种属反应性	与反应: Human 预测可用于: Pig 
免疫原	Synthetic peptide. This information is proprietary to Abcam and/or its suppliers.
阳性对照	IHC-P: Human mesothelioma and ovarian adenocarcinoma tissue.
常规说明	This product is FOR RESEARCH USE ONLY. For commercial use, please contact partnerships@abcam.com.

性能

形式	Liquid
存放说明	Shipped at 4°C. Upon delivery aliquot. Store at +4°C. Do Not Freeze.
存储溶液	pH: 7.60 Preservative: 0.1% Sodium azide Constituents: Tris buffered saline, 1% BSA
纯度	Protein A/G purified
纯化说明	Purified from TCS by protein A/G.
克隆	单克隆
克隆编号	SP74
同种型	IgG

应用

The Abpromise guarantee

Abpromise™ 承诺保证使用 ab228144 于以下的经测试应用

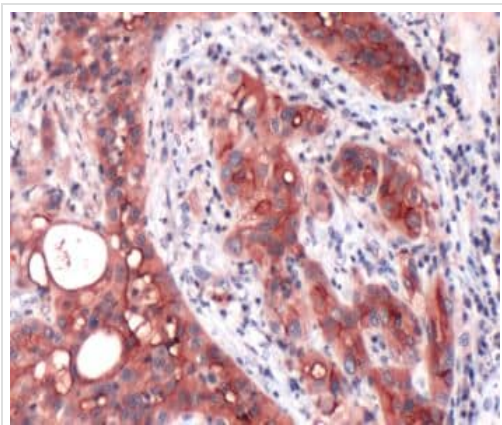
“应用说明”部分下显示的仅为推荐的起始稀释度；实际最佳的稀释度/浓度应由使用者检定。

应用	Ab评论	说明
IHC-P		1/1. Perform heat mediated antigen retrieval with citrate buffer pH 6 before commencing with IHC staining protocol. Pre-diluted / ready to use.

靶标

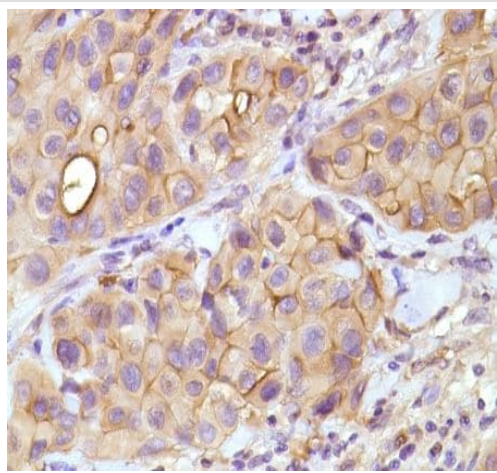
功能	Membrane-anchored forms may play a role in cellular adhesion. Megakaryocyte-potentiating factor (MPF) potentiates megakaryocyte colony formation in vitro.
组织特异性	Expressed in lung. Expressed at low levels in heart, placenta and kidney. Expressed in mesothelial cells. Highly expressed in mesotheliomas, ovarian cancers, and some squamous cell carcinomas (at protein level).
疾病相关	Note=Antibodies against MSLN are detected in patients with mesothelioma and ovarian cancer.
序列相似性	Belongs to the mesothelin family.
翻译后修饰	Both MPF and the cleaved form of mesothelin are N-glycosylated. Proteolytically cleaved by a furin-like convertase to generate megakaryocyte-potentiating factor (MPF), and the cleaved form of mesothelin.
细胞定位	Secreted and Cell membrane. Golgi apparatus.

图片



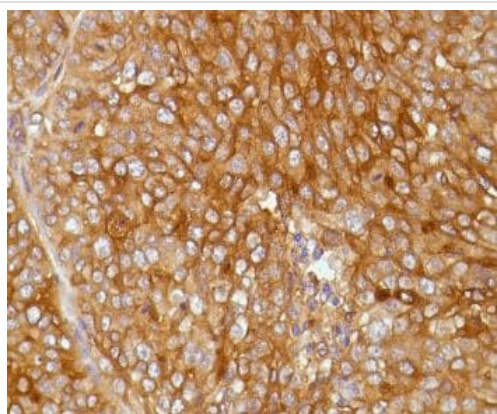
Formalin-fixed, paraffin-embedded human mesothelioma tissue stained for Mesothelin using ab228144 in immunohistochemical analysis.

Immunohistochemistry (Formalin/PFA-fixed paraffin-embedded sections) - Anti-Mesothelin antibody [SP74] - C-terminal, prediluted (ab228144)



Formalin-fixed, paraffin-embedded human mesothelioma tissue stained for Mesothelin using ab228144 in immunohistochemical analysis.

Immunohistochemistry (Formalin/PFA-fixed paraffin-embedded sections) - Anti-Mesothelin antibody [SP74] - C-terminal, prediluted (ab228144)



Formalin-fixed, paraffin-embedded human ovarian adenocarcinoma tissue stained for Mesothelin using ab228144 in immunohistochemical analysis.

Immunohistochemistry (Formalin/PFA-fixed paraffin-embedded sections) - Anti-Mesothelin antibody [SP74] - C-terminal, prediluted (ab228144)

Why choose a recombinant antibody?



Research with confidence
Consistent and reproducible results



Long-term and scalable supply
Recombinant technology



Success from the first experiment
Confirmed specificity



Ethical standards compliant
Animal-free production

Anti-Mesothelin antibody [SP74] - C-terminal,
prediluted (ab228144)

Please note: All products are "FOR RESEARCH USE ONLY. NOT FOR USE IN DIAGNOSTIC PROCEDURES"

Our Abpromise to you: Quality guaranteed and expert technical support

- Replacement or refund for products not performing as stated on the datasheet
- Valid for 12 months from date of delivery
- Response to your inquiry within 24 hours
- We provide support in Chinese, English, French, German, Japanese and Spanish
- Extensive multi-media technical resources to help you
- We investigate all quality concerns to ensure our products perform to the highest standards

If the product does not perform as described on this datasheet, we will offer a refund or replacement. For full details of the Abpromise, please visit <https://www.abcam.cn/abpromise> or contact our technical team.

Terms and conditions

- Guarantee only valid for products bought direct from Abcam or one of our authorized distributors