

Anti-MELK antibody [EPR3981] ab108529

敲除验证
重组
RabMAb

[14 References](#)
[4 图像](#)

概述

产品名称	Anti-MELK抗体[EPR3981]
描述	兔单克隆抗体[EPR3981] to MELK
宿主	Rabbit
经测试应用	适用于: WB 不适用于: Flow Cyt, ICC/IF, IHC-P or IP
种属反应性	与反应: Human
免疫原	Synthetic peptide. This information is proprietary to Abcam and/or its suppliers.
阳性对照	WB: HCT116, K562, 293T, and Jurkat whole cell lysate (ab7899).
常规说明	<p>This product is a recombinant monoclonal antibody, which offers several advantages including:</p> <ul style="list-style-type: none"> - High batch-to-batch consistency and reproducibility - Improved sensitivity and specificity - Long-term security of supply - Animal-free production <p>For more information see here.</p> <p>Our RabMAb[®] technology is a patented hybridoma-based technology for making rabbit monoclonal antibodies. For details on our patents, please refer to RabMAb[®] patents.</p> <p>Mouse, Rat: We have preliminary internal testing data to indicate this antibody may not react with these species. Please contact us for more information.</p>

性能

形式	Liquid
存放说明	Shipped at 4°C. Store at +4°C short term (1-2 weeks). Upon delivery aliquot. Store at -20°C. Stable for 12 months at -20°C.
存储溶液	pH: 7.20 Preservative: 0.05% Sodium azide Constituents: 40% Glycerol (glycerin, glycerine), 9.85% Tris glycine, 50% Tissue culture supernatant
纯度	Protein A purified

克隆	单克隆
克隆编号	EPR3981
同种型	IgG

应用

The Abpromise guarantee

Abpromise™承诺保证使用ab108529于以下的经测试应用

“应用说明”部分 下显示的仅为推荐的起始稀释度;实际最佳的稀释度/浓度应由使用者检定。

应用	Ab评论	说明
WB		1/1000 - 1/10000. Predicted molecular weight: 75 kDa.

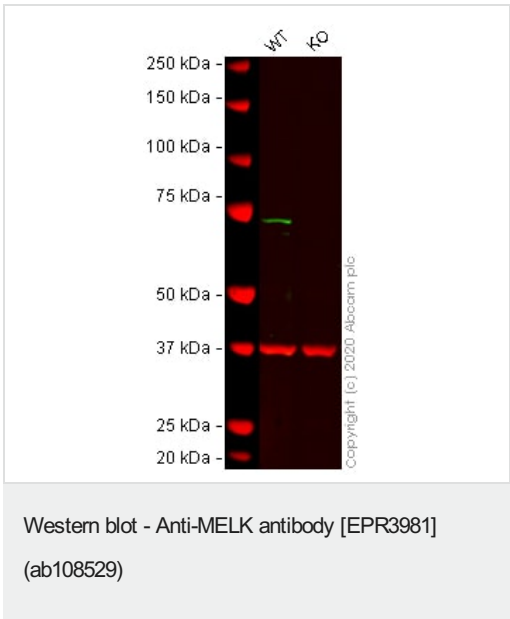
应用说明

Is unsuitable for Flow Cyt,ICC/IF,IHC-P or IP.

靶标

功能	Phosphorylates ZNF622 and may contribute to its redirection to the nucleus. May be involved in the inhibition of spliceosome assembly during mitosis.
组织特异性	Expressed in placenta, kidney, thymus, testis, ovary and intestine.
序列相似性	Belongs to the protein kinase superfamily. CAMK Ser/Thr protein kinase family. SNF1 subfamily. Contains 1 KA1 (kinase-associated) domain. Contains 1 protein kinase domain.
翻译后修饰	Autophosphorylated. Thr-478 phosphorylation during mitosis promotes interaction with PPP1R8.
细胞定位	Cytoplasm.

图片



All lanes : Anti-MELK antibody [EPR3981] (ab108529) at 1/1000 dilution

Lane 1 : HCT116 cell lysate
Lane 2 : MELK knockout HCT116 cell lysate

Lysates/proteins at 20 µg per lane.

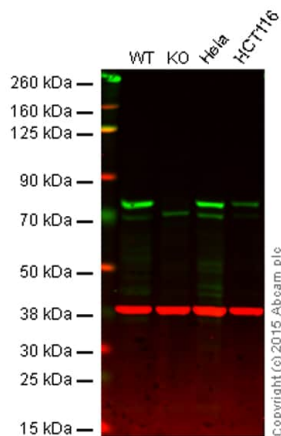
Performed under reducing conditions.

Predicted band size: 75 kDa
Observed band size: 75 kDa

Lanes 1 - 2: Merged signal (red and green). Green - ab108529

observed at 75 kDa. Red - loading control [ab8245](#) (Mouse anti-GAPDH antibody [6C5]) observed at 37kDa.

ab108529 was shown to react with MELK in wild-type HCT116 cells in western blot with loss of signal observed in MELK knockout cell line [ab266896](#) (MELK knockout cell lysate [ab257537](#)). Wild-type and MELK knockout HCT116 cell lysates were subjected to SDS-PAGE. Membranes were blocked in 3% milk in TBS-T (0.1% Tween®) before incubation with ab108529 and [ab8245](#) (Mouse anti-GAPDH antibody [6C5]) overnight at 4°C at a 1 in 1000 dilution and a 1 in 20000 dilution respectively. Blots were incubated with Goat anti-Rabbit IgG H&L (IRDye® 800CW) preabsorbed ([ab216773](#)) and Goat anti-Mouse IgG H&L (IRDye® 680RD) preabsorbed ([ab216776](#)) secondary antibodies at 1 in 20000 dilution for 1 hour at room temperature before imaging.



Western blot - Anti-MELK antibody [EPR3981]
(ab108529)

Lane 1: Wild-type HAP1 cell lysate (20 µg)

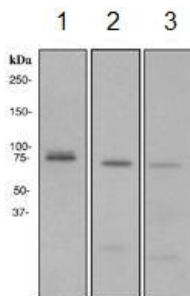
Lane 2: MELK knockout HAP1 cell lysate (20 µg)

Lane 3: HeLa cell lysate (20 µg)

Lane 4: HCT116 cell lysate (20 µg)

Lanes 1 - 4: Merged signal (red and green). Green - ab108529 observed at 75 kDa. Red - loading control, [ab8226](#), observed at 42 kDa.

ab108529 was shown to recognize MELK when MELK knockout samples were used, along with additional cross-reactive bands. Wild-type and MELK knockout samples were subjected to SDS-PAGE. ab108529 and [ab8226](#) (loading control to beta Actin) were both diluted 1/1000 and incubated overnight at 4°C. Blots were developed with Goat anti-Rabbit IgG H&L (IRDye® 800CW) preadsorbed ([ab216773](#)) and Goat anti-Mouse IgG H&L (IRDye® 680RD) preadsorbed ([ab216776](#)) secondary antibodies at 1/10 000 dilution for 1 h at room temperature before imaging.



Western blot - Anti-MELK antibody [EPR3981]
(ab108529)

All lanes : Anti-MELK antibody [EPR3981] (ab108529) at 1/1000 dilution

Lane 1 : K562 cell lysate

Lane 2 : 293T cell lysate

Lane 3 : Jurkat cell lysate





Lysates/proteins at 10 µg per lane.

Secondary

All lanes : HRP-labelled goat anti-rabbit at 1/2000 dilution

Predicted band size: 75 kDa

Why choose a recombinant antibody?

 <p>Research with confidence Consistent and reproducible results</p>	 <p>Long-term and scalable supply Recombinant technology</p>
 <p>Success from the first experiment Confirmed specificity</p>	 <p>Ethical standards compliant Animal-free production</p>

Anti-MELK antibody [EPR3981] (ab108529)

Please note: All products are "FOR RESEARCH USE ONLY. NOT FOR USE IN DIAGNOSTIC PROCEDURES"

Our Abpromise to you: Quality guaranteed and expert technical support

- Replacement or refund for products not performing as stated on the datasheet
- Valid for 12 months from date of delivery
- Response to your inquiry within 24 hours
- We provide support in Chinese, English, French, German, Japanese and Spanish
- Extensive multi-media technical resources to help you
- We investigate all quality concerns to ensure our products perform to the highest standards

If the product does not perform as described on this datasheet, we will offer a refund or replacement. For full details of the Abpromise, please visit <https://www.abcam.cn/abpromise> or contact our technical team.

Terms and conditions

- Guarantee only valid for products bought direct from Abcam or one of our authorized distributors