

Anti-Melatonin Receptor 1A/MTNR1A antibody ab87639

★★★★★ [2 Abreviews](#) [10 References](#) [1 图像](#)

概述

产品名称	Anti-Melatonin Receptor 1A/MTNR1A抗体
描述	山羊多克隆抗体to Melatonin Receptor 1A/MTNR1A
宿主	Goat
经测试应用	适用于: WB
种属反应性	与反应: Human
免疫原	Synthetic peptide corresponding to Human Melatonin Receptor 1A/MTNR1A aa 132-144 (internal sequence) (Cysteine residue). Sequence: SLKYDKLYSSKNS

Database link: [NP_005949.1](#)

 [Run BLAST with](#)

 [Run BLAST with](#)

阳性对照 KELLY lysate

常规说明

The Life Science industry has been in the grips of a reproducibility crisis for a number of years. Abcam is leading the way in addressing this with our range of recombinant monoclonal antibodies and knockout edited cell lines for gold-standard validation. Please check that this product meets your needs before purchasing.

If you have any questions, special requirements or concerns, please send us an inquiry and/or contact our Support team ahead of purchase. Recommended alternatives for this product can be found below, along with publications, customer reviews and Q&As

性能

形式	Liquid
存放说明	Shipped at 4°C. Store at +4°C short term (1-2 weeks). Upon delivery aliquot. Store at -20°C long term.
存储溶液	pH: 7.30 Preservative: 0.02% Sodium azide Constituents: 0.5% BSA, Tris buffered saline
纯度	Immunogen affinity purified
纯化说明	Purified from goat serum by ammonium sulphate precipitation followed by antigen affinity

chromatography using the immunizing peptide.

克隆

多克隆

同种型

IgG

应用

The Abpromise guarantee

Abpromise™承诺保证使用ab87639于以下的经测试应用

“应用说明”部分 下显示的仅为推荐的起始稀释度;实际最佳的稀释度/浓度应由使用者检定。

应用	Ab评论	说明
WB		Use a concentration of 0.3 - 1 µg/ml. Detects a band of approximately 45 kDa (predicted molecular weight: 39 kDa). 1 hour primary incubation is recommended for this product.

靶标

功能

High affinity receptor for melatonin. Likely to mediate the reproductive and circadian actions of melatonin. The activity of this receptor is mediated by pertussis toxin sensitive G proteins that inhibit adenylate cyclase activity.

组织特异性

Expressed in hypothalamic paraventricular nucleus and hypothalamic suprachiasmatic nuclei (SCN). Hippocampus.

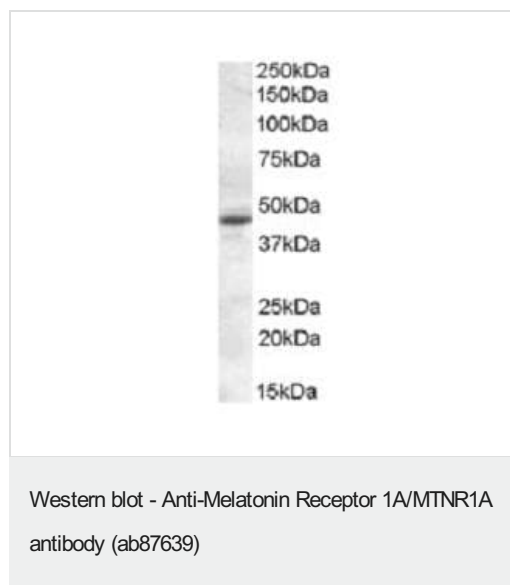
序列相似性

Belongs to the G-protein coupled receptor 1 family.

细胞定位

Cell membrane.

图片



Anti-Melatonin Receptor 1A/MTNR1A antibody (ab87639) at 0.3 µg/ml + KELLY lysate (in RIPA buffer) at 35 µg

Developed using the ECL technique.

Predicted band size: 39 kDa

Observed band size: 45 kDa

Exposure time: 1 hour

Please note: All products are "FOR RESEARCH USE ONLY. NOT FOR USE IN DIAGNOSTIC PROCEDURES"

Our Abpromise to you: Quality guaranteed and expert technical support

- Replacement or refund for products not performing as stated on the datasheet
- Valid for 12 months from date of delivery
- Response to your inquiry within 24 hours

- We provide support in Chinese, English, French, German, Japanese and Spanish
- Extensive multi-media technical resources to help you
- We investigate all quality concerns to ensure our products perform to the highest standards

If the product does not perform as described on this datasheet, we will offer a refund or replacement. For full details of the Abpromise, please visit <https://www.abcam.cn/abpromise> or contact our technical team.

Terms and conditions

- Guarantee only valid for products bought direct from Abcam or one of our authorized distributors