

Anti-Melanopsin antibody ab19383

5 References **1 图像**

概述

| | |
|-------|---|
| 产品名称 | Anti-Melanopsin抗体 |
| 描述 | 兔多克隆抗体to Melanopsin |
| 宿主 | Rabbit |
| 经测试应用 | 适用于: IHC-Fr, IHC-P, WB, ICC/IF |
| 种属反应性 | 与反应: Mouse, Rat, Human |
| 免疫原 | Synthetic peptide corresponding to Rat Melanopsin aa 455-474. Sequence: EQKSKTPKTKRHLP SLDRRM |

 [Run BLAST with](#)

 [Run BLAST with](#)

常规说明

The Life Science industry has been in the grips of a reproducibility crisis for a number of years. Abcam is leading the way in addressing this with our range of recombinant monoclonal antibodies and knockout edited cell lines for gold-standard validation. Please check that this product meets your needs before purchasing.

If you have any questions, special requirements or concerns, please send us an inquiry and/or contact our Support team ahead of purchase. Recommended alternatives for this product can be found below, along with publications, customer reviews and Q&As

性能

| | |
|------|---|
| 形式 | Liquid |
| 存放说明 | Shipped at 4°C. Upon delivery aliquot and store at -20°C. Avoid freeze / thaw cycles. |
| 存储溶液 | Preservative: 0.05% Sodium azide Constituents: PBS, 0.1% BSA |
| 纯度 | Immunogen affinity purified |
| 克隆 | 多克隆 |
| 同种型 | IgG |

应用

The Abpromise guarantee

Abpromise™ 承诺保证使用ab19383于以下的经测试应用

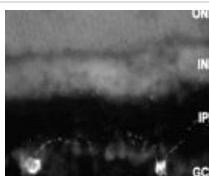
“应用说明”部分 下显示的仅为推荐的起始稀释度;实际最佳的稀释度/浓度应由使用者检定。

| 应用 | Ab评论 | 说明 |
|--------|------|--|
| IHC-Fr | | Use at an assay dependent concentration. |
| IHC-P | | Use at an assay dependent concentration. |
| WB | | Use at an assay dependent concentration. Predicted molecular weight: 52 kDa. Not recommended for the detection of endogenously expressed protein. |
| ICC/IF | | Use a concentration of 5 µg/ml. |

靶标

| | |
|-------|---|
| 功能 | Photoreceptor required for regulation of circadian rhythm. Contributes to pupillar reflex and other non-image forming responses to light. May be able to isomerize covalently bound all-trans retinal back to 11-cis retinal. |
| 组织特异性 | Eye. Expression is restricted within the ganglion and amacrine cell layers of the retina. |
| 序列相似性 | Belongs to the G-protein coupled receptor 1 family. Opsin subfamily. |
| 细胞定位 | Cell membrane. Found in soma, dendrites and proximal part of axons of certain retinal ganglion cells. |

图片



Immunofluorescence staining of melanopsin in rat retinal ganglion cells using ab19383.

Immunocytochemistry/ Immunofluorescence - Anti-Melanopsin antibody (ab19383)

Please note: All products are "FOR RESEARCH USE ONLY. NOT FOR USE IN DIAGNOSTIC PROCEDURES"

Our Abpromise to you: Quality guaranteed and expert technical support

- Replacement or refund for products not performing as stated on the datasheet
- Valid for 12 months from date of delivery
- Response to your inquiry within 24 hours
- We provide support in Chinese, English, French, German, Japanese and Spanish
- Extensive multi-media technical resources to help you

- We investigate all quality concerns to ensure our products perform to the highest standards

If the product does not perform as described on this datasheet, we will offer a refund or replacement. For full details of the Abpromise, please visit <https://www.abcam.cn/abpromise> or contact our technical team.

Terms and conditions

- Guarantee only valid for products bought direct from Abcam or one of our authorized distributors