



Anti-Melanopsin antibody ab19306

5 References 2 图像

概述	
产品名称	Anti-Melanopsin抗体
描述	兔多克隆抗体to Melanopsin
宿主	Rabbit
经测试应用	适用于: WB, IHC-P, ICC/IF
种属反应性	与反应: Mouse, Rat, Human
免疫原	Synthetic peptide corresponding to Rat Melanopsin aa 1-100. Database link: Q8R456 <div> Run BLAST with Run BLAST with</div>
常规说明	<p>The Life Science industry has been in the grips of a reproducibility crisis for a number of years. Abcam is leading the way in addressing this with our range of recombinant monoclonal antibodies and knockout edited cell lines for gold-standard validation. Please check that this product meets your needs before purchasing.</p> <p>If you have any questions, special requirements or concerns, please send us an inquiry and/or contact our Support team ahead of purchase. Recommended alternatives for this product can be found below, along with publications, customer reviews and Q&As</p>
性能	
形式	Liquid
存放说明	Shipped at 4°C. Upon delivery aliquot and store at -20°C or -80°C. Avoid repeated freeze / thaw cycles.
存储溶液	Preservative: 0.05% Sodium azide Constituents: PBS, 0.1% BSA
纯度	Immunogen affinity purified
克隆	多克隆
同种型	IgG
应用	

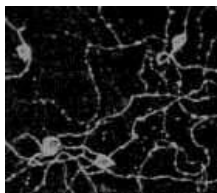
“应用说明”部分 下显示的仅为推荐的起始稀释度;实际最佳的稀释度/浓度应由使用者检定。

应用	Ab评论	说明
WB		Use a concentration of 0.1 - 0.2 µg/ml. Detects a band of approximately 53,85 kDa. Endogenous melanopsin is expressed at low levels making it difficult to detect. We recommend running a positive control and conducting experiments on samples overexpressing melanopsin protein.
IHC-P		Use at an assay dependent concentration.
ICC/IF		Use a concentration of 10 µg/ml.

靶标

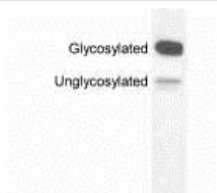
功能	Photoreceptor required for regulation of circadian rhythm. Contributes to pupillar reflex and other non-image forming responses to light. May be able to isomerize covalently bound all-trans retinal back to 11-cis retinal.
组织特异性	Eye. Expression is restricted within the ganglion and amacrine cell layers of the retina.
序列相似性	Belongs to the G-protein coupled receptor 1 family. Opsin subfamily.
细胞定位	Cell membrane. Found in soma, dendrites and proximal part of axons of certain retinal ganglion cells.

图片



Immunocytochemistry/ Immunofluorescence - Anti-Melanopsin antibody (ab19306)

Immunofluorescence and immunocytochemistry staining of Melanopsin in rat retinal ganglion cells (RGCs) can be performed using ab19306.



Western blot - Anti-Melanopsin antibody (ab19306)

By Western blot, this antibody detects ~53 and ~85 kDa proteins representing overexpressed unglycosylated and glycosylated rat melanopsin from HEK 293 cells.

Please note: All products are "FOR RESEARCH USE ONLY. NOT FOR USE IN DIAGNOSTIC PROCEDURES"

Our Abpromise to you: Quality guaranteed and expert technical support

- Replacement or refund for products not performing as stated on the datasheet
- Valid for 12 months from date of delivery
- Response to your inquiry within 24 hours

- We provide support in Chinese, English, French, German, Japanese and Spanish
- Extensive multi-media technical resources to help you
- We investigate all quality concerns to ensure our products perform to the highest standards

If the product does not perform as described on this datasheet, we will offer a refund or replacement. For full details of the Abpromise, please visit <https://www.abcam.cn/abpromise> or contact our technical team.

Terms and conditions

- Guarantee only valid for products bought direct from Abcam or one of our authorized distributors