

Anti-Melanophilin antibody ab2716

1 [References](#) **2** [图像](#)

概述

产品名称	Anti-Melanophilin抗体
描述	山羊多克隆抗体to Melanophilin
宿主	Goat
经测试应用	适用于: WB, ICC/IF
种属反应性	与反应: Mouse 预测可用于: Rat 
免疫原	Synthetic peptide corresponding to Mouse Melanophilin aa 550 to the C-terminus (C terminal). Database link: Q91V27  Run BLAST with  Run BLAST with
常规说明	<p>The Life Science industry has been in the grips of a reproducibility crisis for a number of years. Abcam is leading the way in addressing this with our range of recombinant monoclonal antibodies and knockout edited cell lines for gold-standard validation. Please check that this product meets your needs before purchasing.</p> <p>If you have any questions, special requirements or concerns, please send us an inquiry and/or contact our Support team ahead of purchase. Recommended alternatives for this product can be found below, along with publications, customer reviews and Q&As</p>

性能

形式	Liquid
存放说明	Shipped at 4°C. Upon delivery aliquot and store at -20°C. Avoid freeze / thaw cycles.
存储溶液	pH: 7.30 Preservative: 0.02% Sodium azide Constituents: Tris buffered saline, 0.5% BSA
纯度	Immunogen affinity purified
纯化说明	Purified from goat serum by ammonium sulphate precipitation followed by antigen affinity chromatography using the immunizing peptide.
克隆	多克隆
同种型	IgG

应用

The Abpromise guarantee **Abpromise™**承诺保证使用ab2716于以下的经测试应用

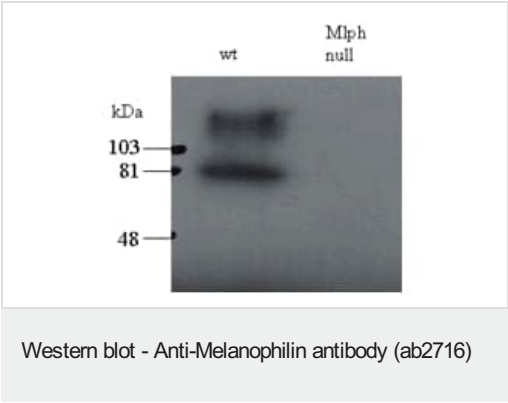
“应用说明”部分 下显示的仅为推荐的起始稀释度;实际最佳的稀释度/浓度应由使用者检定。

应用	Ab评论	说明
WB		Use a concentration of 0.5 - 2 µg/ml. Predicted molecular weight: 65 kDa. 1 hour primary incubation is recommended for this product.
ICC/IF		Use a concentration of 0.5 µg/ml.

靶标

功能	Rab effector protein involved in melanosome transport. Serves as link between melanosome-bound RAB27A and the motor protein MYO5A.
疾病相关	Defects in MLPH are a cause of Griscelli syndrome type 3 (GS3) [MIM:609227]. GS3 is a rare autosomal recessive disorder characterized by pigmentary dilution of the skin and hair, the presence of large clumps of pigment in hair shafts, and an accumulation of melanosomes in melanocytes, without other clinical manifestations.
序列相似性	Contains 1 FYVE-type zinc finger. Contains 1 RabBD (Rab-binding) domain.
细胞定位	Cytoplasm.

图片



All lanes : Anti-Melanophilin antibody (ab2716) at 0.5 µg/ml

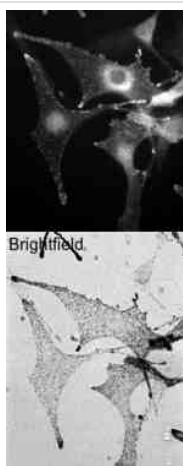
Lane 1 : total melanocyte PNS (200ug per lane) of wild-type

Lane 2 : total melanocyte PNS (200ug per lane) of leaden (Mlph null) mice

Predicted band size: 65 kDa

Observed band size: 81 kDa

ab2716 staining (0.5ug/ml) of total melanocyte PNS (200ug per lane) of wild-type and leaden (Mlph null) mice. The upper band may represent the stacking-separating gel interface.



Wild-type C57bl6 derived melanocytes were stained with ab2716 (0.5ug/ml) and detected with Alexa568 conjugated donkey anti-sheep second antibodies. Brightfield image shows melanosome distribution. Data kindly provided by A N Hume, Imperial College.

Immunocytochemistry/ Immunofluorescence - Anti-Melanophilin antibody (ab2716)

Please note: All products are "FOR RESEARCH USE ONLY. NOT FOR USE IN DIAGNOSTIC PROCEDURES"

Our Abpromise to you: Quality guaranteed and expert technical support

- Replacement or refund for products not performing as stated on the datasheet
- Valid for 12 months from date of delivery
- Response to your inquiry within 24 hours
- We provide support in Chinese, English, French, German, Japanese and Spanish
- Extensive multi-media technical resources to help you
- We investigate all quality concerns to ensure our products perform to the highest standards

If the product does not perform as described on this datasheet, we will offer a refund or replacement. For full details of the Abpromise, please visit <https://www.abcam.cn/abpromise> or contact our technical team.

Terms and conditions

- Guarantee only valid for products bought direct from Abcam or one of our authorized distributors