

Anti-Melanoma Associated Antigen 100+ / 7 kDa antibody [NKI/beteb] ab34165

8 References **2 图像**

概述

产品名称	Anti-Melanoma Associated Antigen 100+ / 7 kDa抗体[NKI/beteb]
描述	小鼠单克隆抗体[NKI/beteb] to Melanoma Associated Antigen 100+ / 7 kDa
宿主	Mouse
经测试应用	适用于: Flow Cyt, IHC-P
种属反应性	与反应: Human
免疫原	Tissue, cells or virus corresponding to Human Melanoma Associated Antigen 100+/ 7 kDa. Membranes from a human melanoma metastasis
常规说明	<p>The Life Science industry has been in the grips of a reproducibility crisis for a number of years. Abcam is leading the way in addressing this with our range of recombinant monoclonal antibodies and knockout edited cell lines for gold-standard validation. Please check that this product meets your needs before purchasing.</p> <p>If you have any questions, special requirements or concerns, please send us an inquiry and/or contact our Support team ahead of purchase. Recommended alternatives for this product can be found below, along with publications, customer reviews and Q&As</p>

性能

形式	Liquid
存放说明	Shipped at 4°C. Store at 4°C (stable for up to 12 months). Upon delivery aliquot. Store at +4°C.
存储溶液	pH: 7.3 Preservative: 0.02% Sodium azide Constituents: PBS, 0.1% BSA
纯度	Protein G purified
克隆	单克隆
克隆编号	NKI/beteb
同种型	IgG2b

应用

The Abpromise guarantee

Abpromise™承诺保证使用ab34165于以下的经测试应用

“应用说明”部分 下显示的仅为推荐的起始稀释度;实际最佳的稀释度/浓度应由使用者检定。

应用	Ab评论	说明
Flow Cyt		Use 1µg for 10 ⁶ cells. Also see PubMed: 21247888 ab170182 Mouse monoclonal IgG2b is suitable for use as an
IHC-P		1/5 - 1/20. Formalin fixation and embedding in paraffin may affect the reactivity of the antibody.

靶标

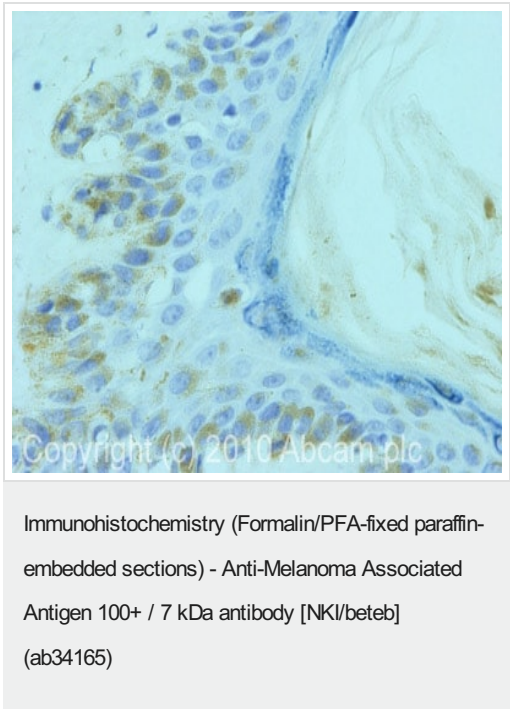
相关性

A (pre)melanosomal 100 + 7 kd antigen (glycoprotein) present in melanomas, clear cells sarcomas (melanoma of soft tissue), nevocellular nevi, and normal melanocytes. Except for one case of non Hodgkin's lymphoma in which macrophages were positive, the antigen has not been detected with other tumors or tissues observed.

细胞定位

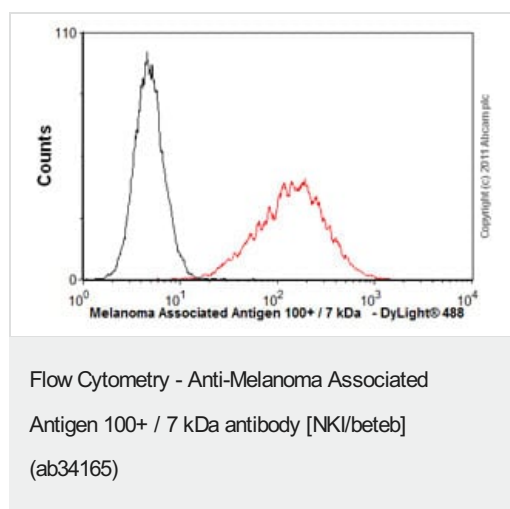
The innerside of membranes of cytoplasmic vesicles in melanoma cells.

图片



IHC image of ab34165 staining in human melanoma formalin fixed paraffin embedded tissue section, performed on a Leica Bond™ system using the standard protocol F. The section was pre-treated using heat mediated antigen retrieval with sodium citrate buffer (pH6, epitope retrieval solution 1) for 20 mins. The section was then incubated with ab34165 5µg/ml, for 15 mins at room temperature and detected using an HRP conjugated compact polymer system. DAB was used as the chromogen. The section was then counterstained with haematoxylin and mounted with DPX.

For other IHC staining systems (automated and non-automated) customers should optimize variable parameters such as antigen retrieval conditions, primary antibody concentration and antibody incubation times.



Overlay histogram showing Malme-3 cells stained with ab34165 (red line). The cells were fixed with 80% methanol (5 min) and then permeabilized with 0.1% PBS-Tween for 20 min. The cells were then incubated in 1x PBS / 10% normal goat serum / 0.3M glycine to block non-specific protein-protein interactions followed by the antibody (ab34165, 1µg/1x10⁶ cells) for 30 min at 22°C. The secondary antibody used was DyLight® 488 goat anti-mouse IgG (H+L) ([ab96879](#)) at 1/500 dilution for 30 min at 22°C. Isotype control antibody (black line) was mouse IgG2b [PLPV219] ([ab91366](#), 2µg/1x10⁶ cells) used under the same conditions. Acquisition of >5,000 events was performed. This antibody gave a positive signal in Malme-3 cells fixed with 4% paraformaldehyde/permeabilized in 0.1% PBS-Tween used under the same conditions.

Please note: All products are "FOR RESEARCH USE ONLY. NOT FOR USE IN DIAGNOSTIC PROCEDURES"

Our Abpromise to you: Quality guaranteed and expert technical support

- Replacement or refund for products not performing as stated on the datasheet
- Valid for 12 months from date of delivery
- Response to your inquiry within 24 hours
- We provide support in Chinese, English, French, German, Japanese and Spanish
- Extensive multi-media technical resources to help you
- We investigate all quality concerns to ensure our products perform to the highest standards

If the product does not perform as described on this datasheet, we will offer a refund or replacement. For full details of the Abpromise, please visit <https://www.abcam.cn/abpromise> or contact our technical team.

Terms and conditions

- Guarantee only valid for products bought direct from Abcam or one of our authorized distributors