


Anti-MEK1 antibody ab109556

★★★★☆ [1 Abreviews](#) [5 图像](#)

概述

产品名称	Anti-MEK1抗体
描述	兔多克隆抗体to MEK1
宿主	Rabbit
经测试应用	适用于: WB, IHC-P, ICC/IF
种属反应性	与反应: Rat, Human 预测可用于: Mouse, Rabbit, Chicken, Cow, Dog, Pig 
免疫原	Synthetic peptide corresponding to Human MEK1 aa 350-450 (C terminal). Database link: Q02750 Run BLAST with Run BLAST with
阳性对照	WB: Rat thymus tissue lysate, Rat skeletal muscle tissue lysate, Rat kidney tissue lysate, Rat lung tissue lysate, CEM whole cell lysate, Colo320 whole cell lysate. IHC-P: Human Lung Cancer Tissue and Human Mammary Cancer Tissue ICC: MCF-7
常规说明	The Life Science industry has been in the grips of a reproducibility crisis for a number of years. Abcam is leading the way in addressing this with our range of recombinant monoclonal antibodies and knockout edited cell lines for gold-standard validation. Please check that this product meets your needs before purchasing. If you have any questions, special requirements or concerns, please send us an inquiry and/or contact our Support team ahead of purchase. Recommended alternatives for this product can be found below, along with publications, customer reviews and Q&As

性能

形式	Liquid
存放说明	Shipped at 4°C. Upon delivery aliquot and store at -20°C. Avoid freeze / thaw cycles.
存储溶液	Preservatives: 0.025% Thimerosal (merthiolate), 0.025% Sodium azide Constituents: 2.5% BSA, 0.45% Sodium chloride, 0.1% Dibasic monohydrogen sodium phosphate
纯度	Immunogen affinity purified
克隆	多克隆
同种型	IgG

应用

The Abpromise guarantee

Abpromise™承诺保证使用ab109556于以下的经测试应用

“应用说明”部分 下显示的仅为推荐的起始稀释度;实际最佳的稀释度/浓度应由使用者检定。

应用	Ab评论	说明
WB	★★★★☆ (1)	Use a concentration of 1 µg/ml. Predicted molecular weight: 43 kDa.
IHC-P		Use a concentration of 1 µg/ml. Perform heat mediated antigen retrieval before commencing with IHC staining protocol.
ICC/IF		Use a concentration of 1 µg/ml.

靶标

功能

Catalyzes the concomitant phosphorylation of a threonine and a tyrosine residue in a Thr-Glu-Tyr sequence located in MAP kinases. Activates ERK1 and ERK2 MAP kinases.

组织特异性

Widely expressed, with extremely low levels in brain.

疾病相关

Defects in MAP2K1 are a cause of cardiofaciocutaneous syndrome (CFC syndrome) [MIM:115150]; also known as cardio-facio-cutaneous syndrome. CFC syndrome is characterized by a distinctive facial appearance, heart defects and mental retardation. Heart defects include pulmonic stenosis, atrial septal defects and hypertrophic cardiomyopathy. Some affected individuals present with ectodermal abnormalities such as sparse, friable hair, hyperkeratotic skin lesions and a generalized ichthyosis-like condition. Typical facial features are similar to Noonan syndrome. They include high forehead with bitemporal constriction, hypoplastic supraorbital ridges, downslanting palpebral fissures, a depressed nasal bridge, and posteriorly angulated ears with prominent helices. The inheritance of CFC syndrome is autosomal dominant.

序列相似性

Belongs to the protein kinase superfamily. STE Ser/Thr protein kinase family. MAP kinase kinase subfamily.

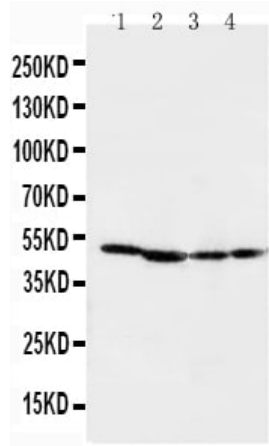
Contains 1 protein kinase domain.

翻译后修饰

Phosphorylation on Ser/Thr by MAP kinase kinase kinases (RAF or MEKK1) regulates positively the kinase activity.

Acetylation by Yersinia yopJ prevents phosphorylation and activation, thus blocking the MAPK signaling pathway.

图片



Western blot - Anti-MEK1 antibody (ab109556)

All lanes : Anti-MEK1 antibody (ab109556) at 0.5 $\mu\text{g/ml}$

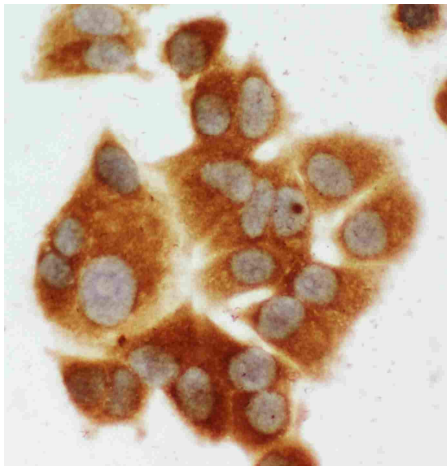
Lane 1 : Rat Skeletal Muscle Tissue Lysate

Lane 2 : Rat Kidney Tissue Lysate

Lane 3 : CEM Cell Lysate

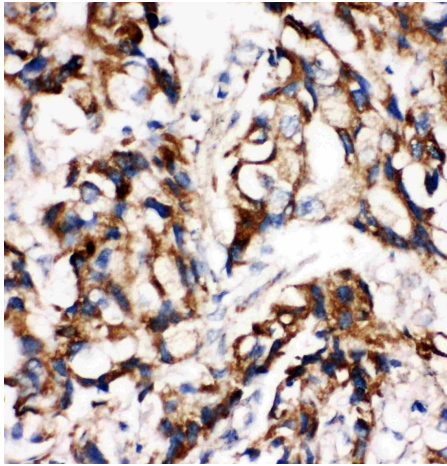
Lane 4 : COLO20 Cell Lysate

Predicted band size: 43 kDa



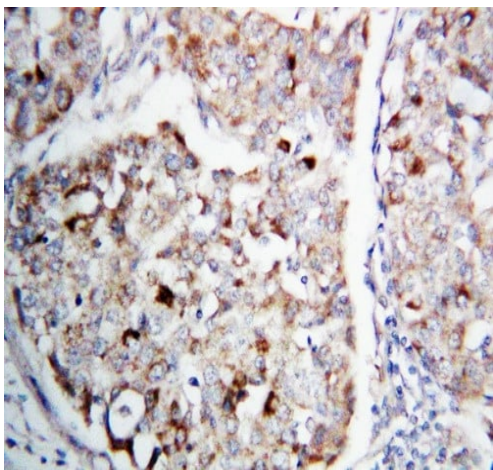
Immunocytochemistry/ Immunofluorescence - Anti-MEK1 antibody (ab109556)

Immunocytochemistry/ Immunofluorescence of MCF-7 cells staining MEK1 using ab109556 at 1 $\mu\text{g/ml}$.



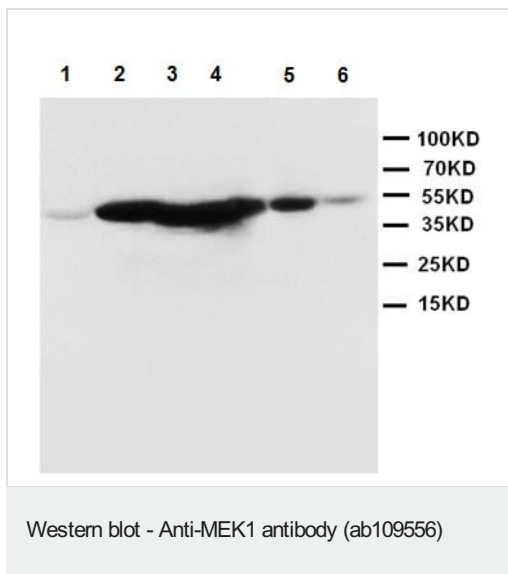
Immunohistochemistry (Formalin/PFA-fixed paraffin-embedded sections) of Human Mammary Cancer Tissue staining MEK1 using ab109556 at 1 μ g/ml.

Immunohistochemistry (Formalin/PFA-fixed paraffin-embedded sections) - Anti-MEK1 antibody (ab109556)



Immunohistochemistry (Formalin/PFA-fixed paraffin-embedded sections) of Human Lung Cancer Tissue staining MEK1 using ab109556 at 1 μ g/ml.

Immunohistochemistry (Formalin/PFA-fixed paraffin-embedded sections) - Anti-MEK1 antibody (ab109556)



All lanes : Anti-MEK1 antibody (ab109556) at 1 µg/ml

Lane 1 : Rat thymus tissue lysate

Lane 2 : Rat skeletal muscle tissue lysate

Lane 3 : Rat kidney tissue lysate

Lane 4 : Rat lung tissue lysate

Lane 5 : CEM whole cell lysate

Lane 6 : Colo320 whole cell lysate

Predicted band size: 43 kDa

Please note: All products are "FOR RESEARCH USE ONLY. NOT FOR USE IN DIAGNOSTIC PROCEDURES"

Our Abpromise to you: Quality guaranteed and expert technical support

- Replacement or refund for products not performing as stated on the datasheet
- Valid for 12 months from date of delivery
- Response to your inquiry within 24 hours
- We provide support in Chinese, English, French, German, Japanese and Spanish
- Extensive multi-media technical resources to help you
- We investigate all quality concerns to ensure our products perform to the highest standards

If the product does not perform as described on this datasheet, we will offer a refund or replacement. For full details of the Abpromise, please visit <https://www.abcam.cn/abpromise> or contact our technical team.

Terms and conditions

- Guarantee only valid for products bought direct from Abcam or one of our authorized distributors