


Anti-ME1 antibody ab97445

★★★★★ 1 Abreviews 21 References 2 图像

概述	
产品名称	Anti-ME1抗体
描述	兔多克隆抗体to ME1
宿主	Rabbit
经测试应用	适用于: IHC-P, WB, ICC/IF
种属反应性	与反应: Mouse, Rat, Human 预测可用于: Cow 
免疫原	Recombinant fragment corresponding to a region within amino acids 161-489 of Human ME1 (NP_002386).
常规说明	<p>The Life Science industry has been in the grips of a reproducibility crisis for a number of years. Abcam is leading the way in addressing this with our range of recombinant monoclonal antibodies and knockout edited cell lines for gold-standard validation. Please check that this product meets your needs before purchasing.</p> <p>If you have any questions, special requirements or concerns, please send us an inquiry and/or contact our Support team ahead of purchase. Recommended alternatives for this product can be found below, along with publications, customer reviews and Q&amp;As</p>
性能	
形式	Liquid
存放说明	Shipped at 4°C. Upon delivery aliquot. Store at -20°C or -80°C. Avoid freeze / thaw cycle.
存储溶液	pH: 7.00 Preservative: 0.025% Proclin 300 Constituents: 79% PBS, 20% Glycerol (glycerin, glycerine)
纯度	Immunogen affinity purified
克隆	多克隆
同种型	IgG
应用	

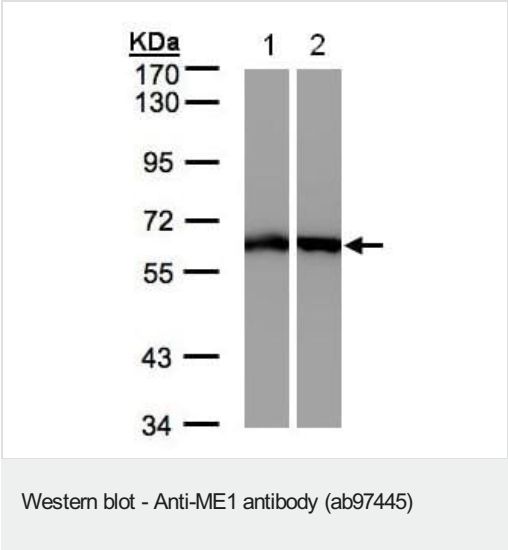
“应用说明”部分 下显示的仅为推荐的起始稀释度;实际最佳的稀释度/浓度应由使用者检定。

应用	Ab评论	说明
IHC-P		Use at an assay dependent concentration.
WB	★★★★★ (1)	1/500 - 1/3000. Predicted molecular weight: 64 kDa.
ICC/IF		1/100 - 1/200.

靶标

组织特异性	Expressed in all tissues tested including liver, placenta and white adipose tissue.
序列相似性	Belongs to the malic enzymes family.
细胞定位	Cytoplasm.

图片



All lanes : Anti-ME1 antibody (ab97445) at 1/500 dilution

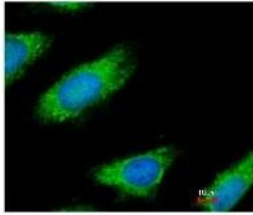
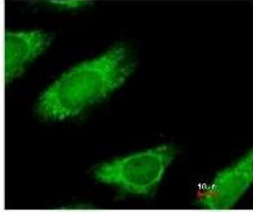
Lane 1 : A431 whole cell lysate

Lane 2 : HeLa S3 whole cell lysate

Lysates/proteins at 30 µg per lane.

Predicted band size: 64 kDa

7.5% SDS PAGE



Immunofluorescence analysis of ME1 in paraformaldehyde fixed HeLa, using ab97445 at a 1/200 dilution.  
Lower image: merged with DNA probe.

Immunocytochemistry/ Immunofluorescence - Anti-ME1 antibody (ab97445)

**Please note:** All products are "FOR RESEARCH USE ONLY. NOT FOR USE IN DIAGNOSTIC PROCEDURES"

### Our Abpromise to you: Quality guaranteed and expert technical support

- Replacement or refund for products not performing as stated on the datasheet
- Valid for 12 months from date of delivery
- Response to your inquiry within 24 hours
- We provide support in Chinese, English, French, German, Japanese and Spanish
- Extensive multi-media technical resources to help you
- We investigate all quality concerns to ensure our products perform to the highest standards

If the product does not perform as described on this datasheet, we will offer a refund or replacement. For full details of the Abpromise, please visit <https://www.abcam.cn/abpromise> or contact our technical team.

### Terms and conditions

- Guarantee only valid for products bought direct from Abcam or one of our authorized distributors