


Anti-MDH1 antibody [EPR13596(B)] ab181091

重组 RabMAb

2 References **3 图像**

概述

产品名称	Anti-MDH1抗体[EPR13596(B)]
描述	兔单克隆抗体[EPR13596(B)] to MDH1
宿主	Rabbit
经测试应用	适用于: Flow Cyt (Intra), WB
种属反应性	与反应: Human 预测可用于: Mouse, Rat 
免疫原	Synthetic peptide. This information is proprietary to Abcam and/or its suppliers.
阳性对照	Human spleen, HepG2 and Jurkat lysates; Jurkat cells.
常规说明	This product is a recombinant monoclonal antibody, which offers several advantages including: <ul style="list-style-type: none"> - High batch-to-batch consistency and reproducibility - Improved sensitivity and specificity - Long-term security of supply - Animal-free production For more information see here . Our RabMAb [®] technology is a patented hybridoma-based technology for making rabbit monoclonal antibodies. For details on our patents, please refer to RabMAb[®] patents .

性能

形式	Liquid
存放说明	Shipped at 4°C. Store at +4°C short term (1-2 weeks). Upon delivery aliquot. Store at -20°C long term. Avoid freeze / thaw cycle.
存储溶液	Preservative: 0.01% Sodium azide Constituents: 40% Glycerol (glycerin, glycerine), 59% PBS, 0.05% BSA
纯度	Tissue culture supernatant
克隆	单克隆
克隆编号	EPR13596(B)
同种型	IgG

应用

The Abpromise guarantee **Abpromise™**承诺保证使用ab181091于以下的经测试应用

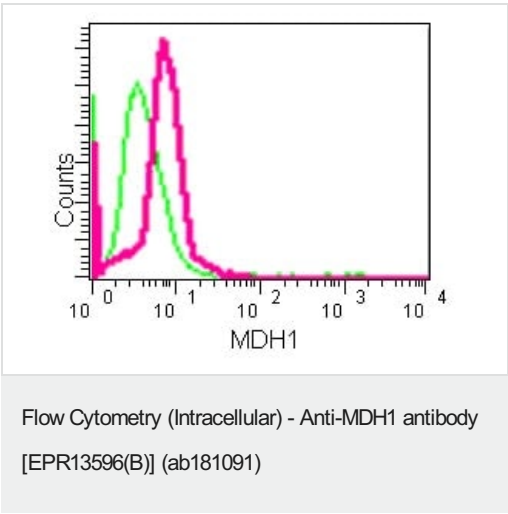
“应用说明”部分 下显示的仅为推荐的起始稀释度;实际最佳的稀释度/浓度应由使用者检定。

应用	Ab评论	说明
Flow Cyt (Intra)		1/100. ab172730 - Rabbit monoclonal IgG, is suitable for use as an isotype control with this antibody.
WB		1/1000 - 1/2000. Detects a band of approximately 36 kDa (predicted molecular weight: 36 kDa).

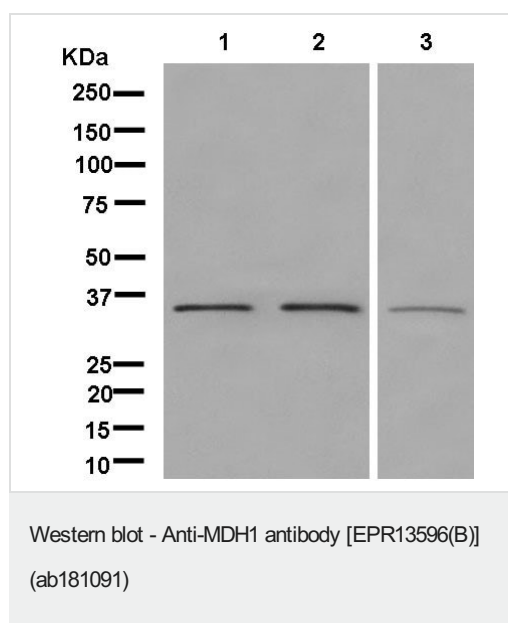
靶标

序列相似性	Belongs to the LDH/MDH superfamily. MDH type 2 family.
翻译后修饰	ISGylated.
细胞定位	Cytoplasm.

图片



Intracellular flow cytometric analysis of 2%paraformaldehyde-fixedJurkat cells labeling MDH1 with ab181091 at 1/100 dilution (red) compared to a Rabbit monoclonal IgG isotype control (green), followed by Goat anti rabbit IgG (FITC) secondary antibody at 1/150 dilution.



All lanes : Anti-MDH1 antibody [EPR13596(B)] (ab181091) at 1/2000 dilution

Lane 1 : Human spleen lysate

Lane 2 : HepG2 cell lysate

Lane 3 : HeLa cell lysate

Lysates/proteins at 20 µg per lane.

Secondary

All lanes : Goat Anti-Rabbit IgG, (H+L), Peroxidase conjugate at 1/1000 dilution

Predicted band size: 36 kDa

Observed band size: 36 kDa

Why choose a recombinant antibody?

Research with confidence
Consistent and reproducible results

Long-term and scalable supply
Recombinant technology

Success from the first experiment
Confirmed specificity

Ethical standards compliant
Animal-free production

Anti-MDH1 antibody [EPR13596(B)] (ab181091)

Please note: All products are "FOR RESEARCH USE ONLY. NOT FOR USE IN DIAGNOSTIC PROCEDURES"

Our Abpromise to you: Quality guaranteed and expert technical support

- Replacement or refund for products not performing as stated on the datasheet
- Valid for 12 months from date of delivery
- Response to your inquiry within 24 hours

- We provide support in Chinese, English, French, German, Japanese and Spanish
- Extensive multi-media technical resources to help you
- We investigate all quality concerns to ensure our products perform to the highest standards

If the product does not perform as described on this datasheet, we will offer a refund or replacement. For full details of the Abpromise, please visit <https://www.abcam.cn/abpromise> or contact our technical team.

Terms and conditions

- Guarantee only valid for products bought direct from Abcam or one of our authorized distributors