

Anti-MDH1 antibody ab175455

[1 References](#) [2 图像](#)

概述

产品名称	Anti-MDH1抗体
描述	山羊多克隆抗体to MDH1
宿主	Goat
经测试应用	适用于: WB
种属反应性	与反应: Mouse, Rat, Human, Pig 预测可用于: Chicken, Cow, Cat, Dog, Xenopus laevis, Xenopus tropicalis 
免疫原	Synthetic peptide corresponding to Human MDH1 aa 135-149 (internal sequence). NP_001186040.1; NP_005908.1; NP_001186041.1. Sequence: TNCLTASKSAPSIPK Database link: P40925 Run BLAST with Run BLAST with
阳性对照	WB: Human, mouse, pig and rat heart lysates.
常规说明	The Life Science industry has been in the grips of a reproducibility crisis for a number of years. Abcam is leading the way in addressing this with our range of recombinant monoclonal antibodies and knockout edited cell lines for gold-standard validation. Please check that this product meets your needs before purchasing. If you have any questions, special requirements or concerns, please send us an inquiry and/or contact our Support team ahead of purchase. Recommended alternatives for this product can be found below, along with publications, customer reviews and Q&As

性能

形式	Liquid
存放说明	Shipped at 4°C. Store at +4°C short term (1-2 weeks). Upon delivery aliquot. Store at -20°C long term. Avoid freeze / thaw cycle.
存储溶液	pH: 7.30 Preservative: 0.02% Sodium azide Constituents: 0.5% BSA, 99% Tris buffered saline
纯度	Immunogen affinity purified

克隆 多克隆
同种型 IgG

应用

The Abpromise guarantee **Abpromise™**承诺保证使用ab175455于以下的经测试应用

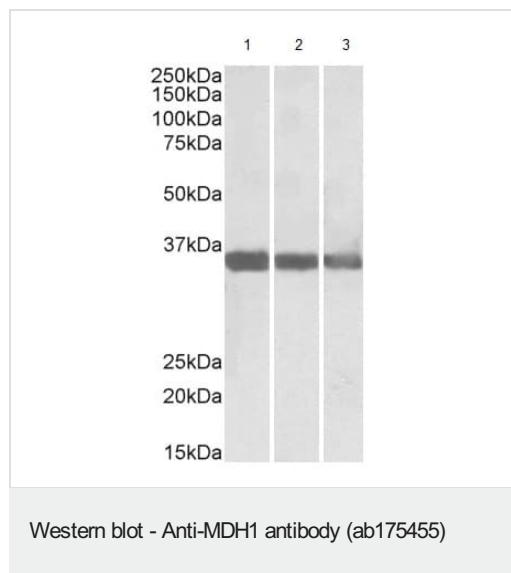
“应用说明”部分 下显示的仅为推荐的起始稀释度;实际最佳的稀释度/浓度应由使用者检定。

应用	Ab评论	说明
WB		Use a concentration of 0.01 - 0.03 µg/ml. Detects a band of approximately 36 kDa (predicted molecular weight: 36 kDa). 1 hour primary incubation is recommended for this product.

靶标

序列相似性 Belongs to the LDH/MDH superfamily. MDH type 2 family.
翻译后修饰 ISGylated.
细胞定位 Cytoplasm.

图片



All lanes : Anti-MDH1 antibody (ab175455) at 0.01 µg/ml

Lane 1 : Human heart lysate (in RIPA buffer)

Lane 2 : Mouse heart lysate (in RIPA buffer)

Lane 3 : Rat heart lysate (in RIPA buffer)

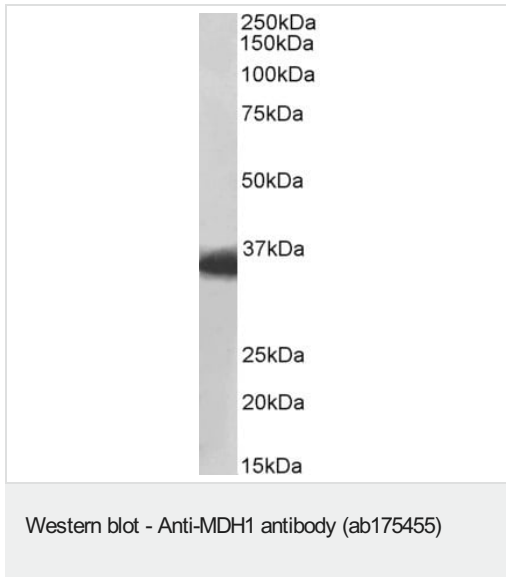
Lysates/proteins at 35 µg per lane.

Developed using the ECL technique.

Predicted band size: 36 kDa

Observed band size: 36 kDa

Primary incubation was 1 hour.



Anti-MDH1 antibody (ab175455) at 0.01 µg/ml + Pig heart lysate (in RIPA buffer) at 35 µg

Developed using the ECL technique.

Predicted band size: 36 kDa

Observed band size: 36 kDa

Primary incubation was 1 hour.

Please note: All products are "FOR RESEARCH USE ONLY. NOT FOR USE IN DIAGNOSTIC PROCEDURES"

Our Abpromise to you: Quality guaranteed and expert technical support

- Replacement or refund for products not performing as stated on the datasheet
- Valid for 12 months from date of delivery
- Response to your inquiry within 24 hours
- We provide support in Chinese, English, French, German, Japanese and Spanish
- Extensive multi-media technical resources to help you
- We investigate all quality concerns to ensure our products perform to the highest standards

If the product does not perform as described on this datasheet, we will offer a refund or replacement. For full details of the Abpromise, please visit <https://www.abcam.cn/abpromise> or contact our technical team.

Terms and conditions

- Guarantee only valid for products bought direct from Abcam or one of our authorized distributors