


### Anti-MDC1 antibody ab11171

★★★★★ [1 Abreviews](#) [31 References](#) [3 图像](#)

#### 概述

产品名称	Anti-MDC1抗体
描述	兔多克隆抗体to MDC1
宿主	Rabbit
经测试应用	适用于: WB, IP, IHC-P
种属反应性	与反应: Human 预测可用于: Chimpanzee 
免疫原	Synthetic peptide corresponding to Human MDC1 aa 1375-1425.
常规说明	<p>The Life Science industry has been in the grips of a reproducibility crisis for a number of years. Abcam is leading the way in addressing this with our range of recombinant monoclonal antibodies and knockout edited cell lines for gold-standard validation. Please check that this product meets your needs before purchasing.</p> <p>If you have any questions, special requirements or concerns, please send us an inquiry and/or contact our Support team ahead of purchase. Recommended alternatives for this product can be found below, along with publications, customer reviews and Q&amp;As</p>

#### 性能

形式	Liquid
存放说明	Shipped at 4°C. Upon delivery aliquot and store at -20°C. Avoid freeze / thaw cycles.
存储溶液	pH: 7 Preservative: 0.1% Sodium azide Constituents: 0.021% PBS, 1.764% Sodium citrate, 1.815% Tris
纯度	Immunogen affinity purified
纯化说明	Antibodies were affinity purified using the peptide immobilized on solid support.
克隆	多克隆
同种型	IgG

#### 应用

The Abpromise guarantee

**Abpromise™** 承诺保证使用ab11171于以下的经测试应用

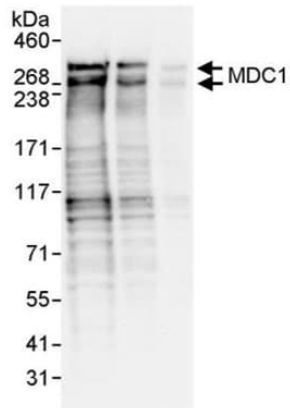
“应用说明”部分 下显示的仅为推荐的起始稀释度;实际最佳的稀释度/浓度应由使用者检定。

应用	Ab评论	说明
WB	★★★★★ (1)	1/5000 - 1/25000. Detects a band of approximately 250 kDa (predicted molecular weight: 220 kDa).
IP		Use at 2-4 µg/mg of lysate.
IHC-P		Use at an assay dependent concentration.

## 靶标

<b>功能</b>	Required for checkpoint mediated cell cycle arrest in response to DNA damage within both the S phase and G2/M phases of the cell cycle. May serve as a scaffold for the recruitment of DNA repair and signal transduction proteins to discrete foci of DNA damage marked by 'Ser-139' phosphorylation of histone H2AFX. Also required for downstream events subsequent to the recruitment of these proteins. These include phosphorylation and activation of the ATM, CHEK1/CHK1 and CHEK2/CHK2/CDS1 kinases, and stabilization of TP53 and apoptosis. ATM and CHEK2 may also be activated independently by a parallel pathway mediated by TP53BP1.
<b>组织特异性</b>	Highly expressed in testis.
<b>序列相似性</b>	Contains 2 BRCT domains. Contains 1 FHA domain.
<b>结构域</b>	Tandemly repeated BRCT domains are characteristic of proteins involved in DNA damage signaling. In MDC1, these repeats are required for localization to chromatin which flanks sites of DNA damage marked by 'Ser-139' phosphorylation of H2AFX.
<b>翻译后修饰</b>	Phosphorylated upon exposure to ionizing radiation (IR), ultraviolet radiation (UV), and hydroxyurea (HU). Phosphorylation in response to IR requires ATM, NBN, and possibly CHEK2. Also phosphorylated during the G2/M phase of the cell cycle and during activation of the mitotic spindle checkpoint.
<b>细胞定位</b>	Nucleus. Associated with chromatin. Relocalizes to discrete nuclear foci following DNA damage, this requires 'Ser-139' phosphorylation of H2AFX. Colocalizes with APTX at sites of DNA double-strand breaks.

## 图片



Western blot - Anti-MDC1 antibody (ab11171)

**All lanes** : Anti-MDC1 antibody (ab11171) at 0.1  $\mu\text{g/ml}$

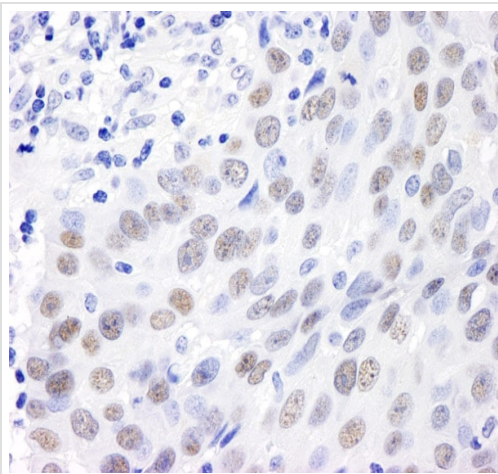
**Lane 1** : HeLa whole cell lysate at 50  $\mu\text{g}$

**Lane 2** : HeLa whole cell lysate at 15  $\mu\text{g}$

**Lane 3** : HeLa whole cell lysate at 5  $\mu\text{g}$

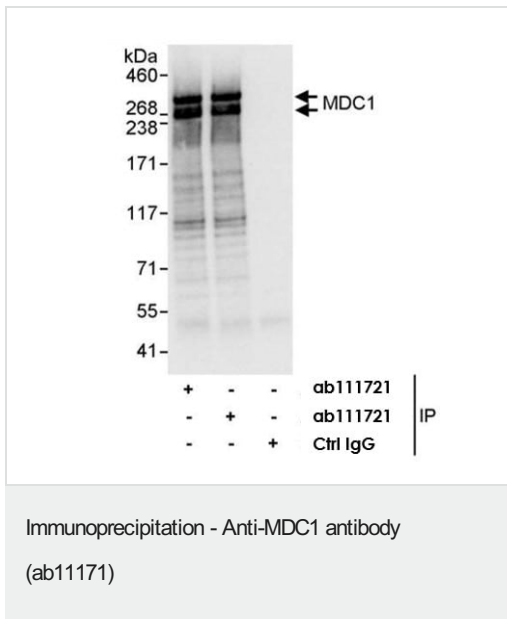
**Predicted band size:** 220 kDa

**Exposure time:** 10 seconds



Immunohistochemistry (Formalin/PFA-fixed paraffin-embedded sections) - Anti-MDC1 antibody (ab11171)

Immunohistochemistry (Formalin/PFA-fixed paraffin-embedded sections) analysis of human breast carcinoma tissue labelling MDC1 with ab11171 at 1/1000 (1 $\mu\text{g/ml}$ ). Detection: DAB.



1 mg of HeLa whole cell lysate was incubated with ab11171, 3 µg/mL. For western blotting ab11171, 1 µg/mL was used to confirm successful immunoprecipitation.

**Please note:** All products are "FOR RESEARCH USE ONLY. NOT FOR USE IN DIAGNOSTIC PROCEDURES"

### Our Abpromise to you: Quality guaranteed and expert technical support

- Replacement or refund for products not performing as stated on the datasheet
- Valid for 12 months from date of delivery
- Response to your inquiry within 24 hours
- We provide support in Chinese, English, French, German, Japanese and Spanish
- Extensive multi-media technical resources to help you
- We investigate all quality concerns to ensure our products perform to the highest standards

If the product does not perform as described on this datasheet, we will offer a refund or replacement. For full details of the Abpromise, please visit <https://www.abcam.cn/abpromise> or contact our technical team.

### Terms and conditions

- Guarantee only valid for products bought direct from Abcam or one of our authorized distributors