

Anti-MD2 antibody ab24182

★★★★★ [15 Abreviews](#) [38 References](#) [10 图像](#)

概述

产品名称	Anti-MD2抗体
描述	兔多克隆抗体to MD2
宿主	Rabbit
经测试应用	适用于: WB, ICC/IF, IHC-P
种属反应性	与反应: Mouse, Rat, Human
免疫原	<p>Synthetic peptide corresponding to Human MD2. MD-2 antibody was raised against a peptide corresponding to 13 amino acids near the center of human MD-2. The immunogen is located within the last 50 amino acids of MD-2.</p> <p>Database link: Q9Y6Y9 (Peptide available as ab39815)</p>
常规说明	<p>The Life Science industry has been in the grips of a reproducibility crisis for a number of years. Abcam is leading the way in addressing this with our range of recombinant monoclonal antibodies and knockout edited cell lines for gold-standard validation. Please check that this product meets your needs before purchasing.</p> <p>If you have any questions, special requirements or concerns, please send us an inquiry and/or contact our Support team ahead of purchase. Recommended alternatives for this product can be found below, along with publications, customer reviews and Q&As</p>

性能

形式	Liquid
存放说明	Shipped at 4°C. Store at +4°C short term (1-2 weeks). Store at +4°C.
存储溶液	<p>pH: 7.2</p> <p>Preservative: 0.02% Sodium azide</p> <p>Constituent: PBS</p>
纯度	Affinity purified
纯化说明	Via peptide column.
克隆	多克隆
同种型	IgG

应用

The Abpromise guarantee **Abpromise™**承诺保证使用ab24182于以下的经测试应用

“应用说明”部分 下显示的仅为推荐的起始稀释度;实际最佳的稀释度/浓度应由使用者检定。

应用	Ab评论	说明
WB	★★★★☆ (5)	Use a concentration of 0.5 - 2 µg/ml. Detects a band of approximately 25 kDa (predicted molecular weight: 18 kDa).
ICC/IF	★★★★★ (2)	Use at an assay dependent concentration.
IHC-P	★★★★☆ (5)	Use at an assay dependent concentration.

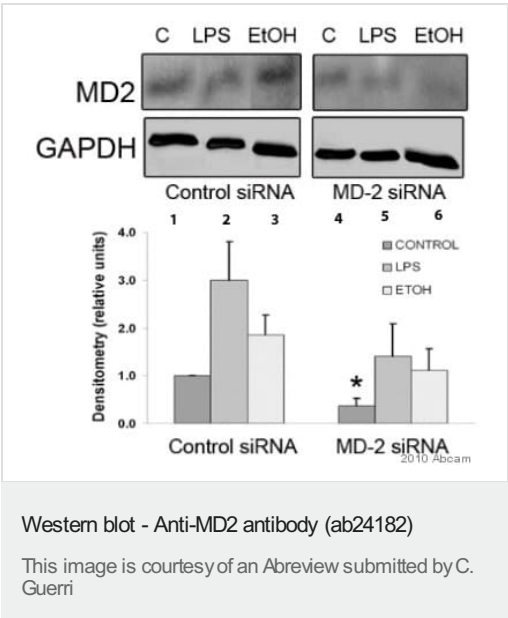
靶标

功能 Cooperates with TLR4 in the innate immune response to bacterial lipopolysaccharide (LPS), and with TLR2 in the response to cell wall components from Gram-positive and Gram-negative bacteria. Enhances TLR4-dependent activation of NF-kappa-B. Cells expressing both MD2 and TLR4, but not TLR4 alone, respond to LPS.

翻译后修饰 N-glycosylated; high-mannose.

细胞定位 Secreted > extracellular space.

图片



All lanes : Anti-MD2 antibody (ab24182) at 2 µg/ml (in 5% milk in TBS/T 0.1% (blocking buffer) for 12 hours at 4°C)

Lane 1 : Whole cell lysate of rat cortical astrocytes treated with control siRNA for 96 hours

Lane 2 : Whole cell lysate of rat cortical astrocytes treated with control siRNA for 96 hours and LPS (50 ng/ml) for 10 minutes

Lane 3 : Whole cell lysate of rat cortical astrocytes treated with control siRNA for 96 hours and ethanol (50 mM) for 10 minutes

Lane 4 : Whole cell lysate of rat cortical astrocytes treated with MD2 siRNA for 96 hours

Lane 5 : Whole cell lysate of rat cortical astrocytes treated with MD2 siRNA for 96 hours and LPS (50 ng/ml) for 10 minutes

Lane 6 : Whole cell lysate of rat cortical astrocytes treated with MD2 siRNA for 96 hours and ethanol (50 mM) for 10 minutes

Lysates/proteins at 40 µg per lane.

Secondary

All lanes : An HRP-conjugated Goat anti-rabbit IgG at 1/20000

dilution

Developed using the ECL technique.

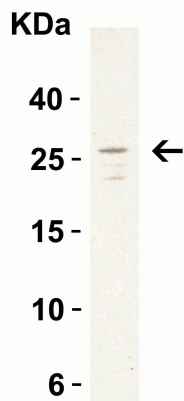
Performed under reducing conditions.

Predicted band size: 18 kDa

Observed band size: 25 kDa

Exposure time: 2 minutes

Blocking Step: 5% Milk for 1 hour at room temperature.



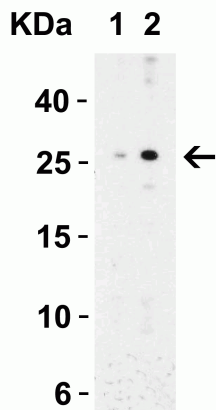
Western blot - Anti-MD2 antibody (ab24182)

Anti-MD2 antibody (ab24182) at 1 µg/ml + Daudi cell lysate at 15 µg

Secondary

Goat anti-rabbit IgG HRP conjugate at 1/10000 dilution

Predicted band size: 18 kDa



Western blot - Anti-MD2 antibody (ab24182)

Lane 1 : Anti-TRIM5 delta antibody (**ab24181**) at 0.5 µg/ml

Lane 2 : Anti-TRIM5 delta antibody (**ab24181**) at 1 µg/ml

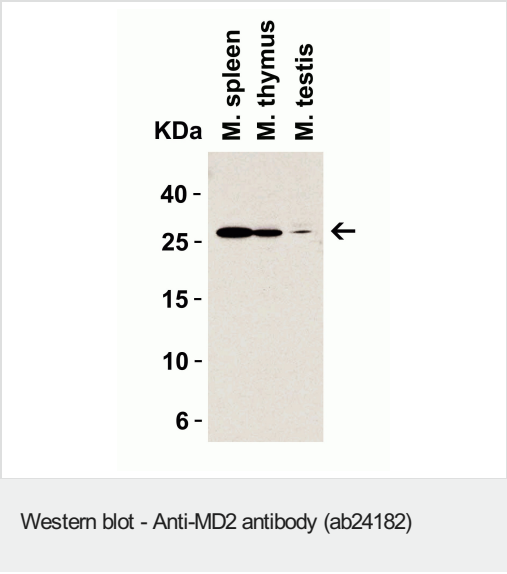
All lanes : Mouse spleen tissue

Lysates/proteins at 15 µg per lane.

Secondary

All lanes : Goat anti-rabbit IgG HRP conjugate at 1/10000 dilution

Predicted band size: 18 kDa



All lanes : Anti-MD2 antibody (ab24182) at 1 µg/ml

Lane 1 : Mouse spleen lysate

Lane 2 : Mouse thymus lysate

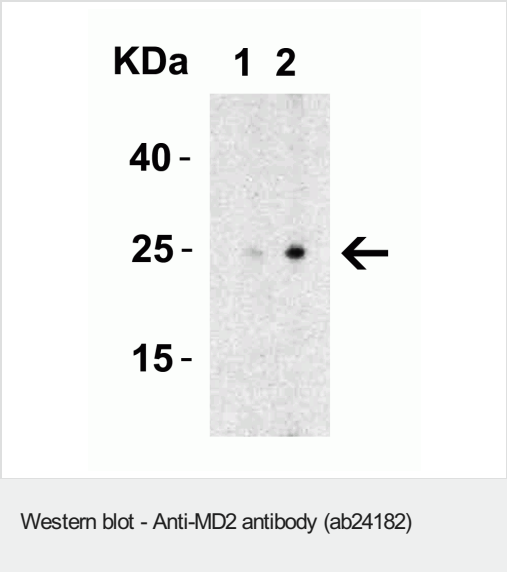
Lane 3 : Mouse testis lysate

Lysates/proteins at 15 µg per lane.

Secondary

All lanes : Goat anti-rabbit IgG HRP conjugate at 1/10000 dilution

Predicted band size: 18 kDa



All lanes : Anti-MD2 antibody (ab24182)

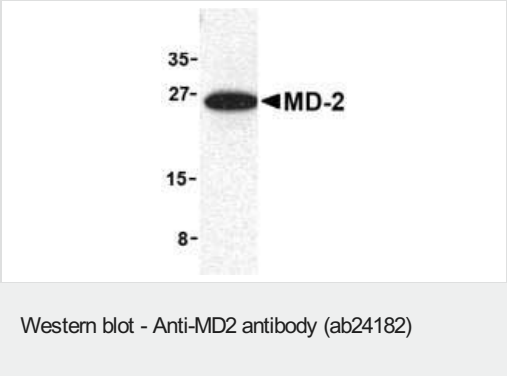
All lanes : Rat spleen lysate

Lysates/proteins at 15 µg per lane.

Secondary

All lanes : Goat anti-rabbit IgG HRP conjugate at 1/10000 dilution

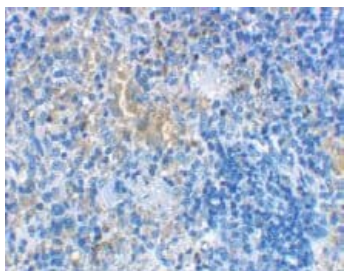
Predicted band size: 18 kDa



Anti-MD2 antibody (ab24182) at 1 µg/ml (mouse spleen lysate)

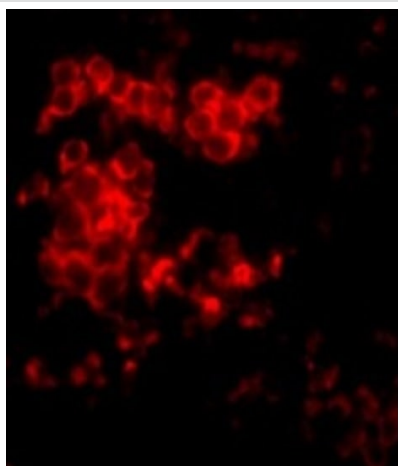
Predicted band size: 18 kDa

Observed band size: 26 kDa



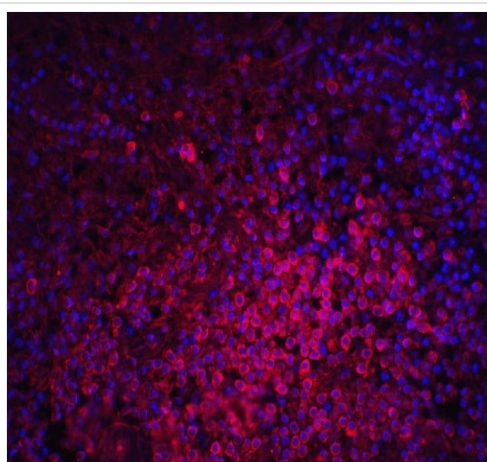
Immunohistochemistry (Formalin/PFA-fixed paraffin-embedded sections) - Anti-MD2 antibody (ab24182)

ab24182 at 2µg/ml staining of MD2 in rat spleen cells by IHC



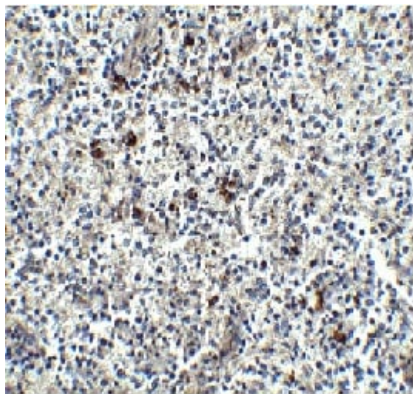
Immunocytochemistry/ Immunofluorescence - Anti-MD2 antibody (ab24182)

Immunofluorescent analysis of MD2 in Rat Spleen cells with ab24182 at 10 µg/mL in ICC/IF.



Immunocytochemistry/ Immunofluorescence - Anti-MD2 antibody (ab24182)

Immunofluorescent analysis of MD2 in human spleen cells with ab24182 at 20 µg/mL in ICC/IF.



Immunohistochemical analysis of human spleen tissue stained for MD2 using ab24182 at 2.5µg/mL.

Immunohistochemistry (Formalin/PFA-fixed paraffin-embedded sections) - Anti-MD2 antibody (ab24182)

Please note: All products are "FOR RESEARCH USE ONLY. NOT FOR USE IN DIAGNOSTIC PROCEDURES"

Our Abpromise to you: Quality guaranteed and expert technical support

- Replacement or refund for products not performing as stated on the datasheet
- Valid for 12 months from date of delivery
- Response to your inquiry within 24 hours
- We provide support in Chinese, English, French, German, Japanese and Spanish
- Extensive multi-media technical resources to help you
- We investigate all quality concerns to ensure our products perform to the highest standards

If the product does not perform as described on this datasheet, we will offer a refund or replacement. For full details of the Abpromise, please visit <https://www.abcam.cn/abpromise> or contact our technical team.

Terms and conditions

- Guarantee only valid for products bought direct from Abcam or one of our authorized distributors