


Anti-MCP1 antibody ab73680

★★★★★ [1 Abreviews](#) [9 References](#) [1 图像](#)

概述

产品名称	Anti-MCP1抗体
描述	兔多克隆抗体to MCP1
宿主	Rabbit
经测试应用	适用于: WB
种属反应性	与反应: Human 预测可用于: Chimpanzee, Rhesus monkey, Orangutan 
免疫原	Synthetic peptide corresponding to Human MCP1 aa 50 to the C-terminus (C terminal) conjugated to keyhole limpet haemocyanin. (Peptide available as ab73679)
阳性对照	This antibody gave a positive signal in the following Human Whole Cell Lysates: HCT 116, HeLa
常规说明	<p>The Life Science industry has been in the grips of a reproducibility crisis for a number of years. Abcam is leading the way in addressing this with our range of recombinant monoclonal antibodies and knockout edited cell lines for gold-standard validation. Please check that this product meets your needs before purchasing.</p> <p>If you have any questions, special requirements or concerns, please send us an inquiry and/or contact our Support team ahead of purchase. Recommended alternatives for this product can be found below, along with publications, customer reviews and Q&As</p>

性能

形式	Liquid
存放说明	Shipped at 4°C. Store at +4°C short term (1-2 weeks). Upon delivery aliquot. Store at -20°C or -80°C. Avoid freeze / thaw cycle.
存储溶液	pH: 7.40 Preservative: 0.02% Sodium azide Constituent: PBS
纯度	Batches of this product that have a concentration < 1mg/ml may have BSA added as a stabilising agent. If you would like information about the formulation of a specific lot, please contact our scientific support team who will be happy to help. Immunogen affinity purified

克隆 多克隆
同种型 IgG

应用

The Abpromise guarantee **Abpromise™** 承诺保证使用 ab73680 于以下的经测试应用

“应用说明”部分 下显示的仅为推荐的起始稀释度；实际最佳的稀释度/浓度应由使用者检定。

应用	Ab评论	说明
WB		Use a concentration of 1 µg/ml. Detects a band of approximately 17 kDa (predicted molecular weight: 11 kDa).

靶标

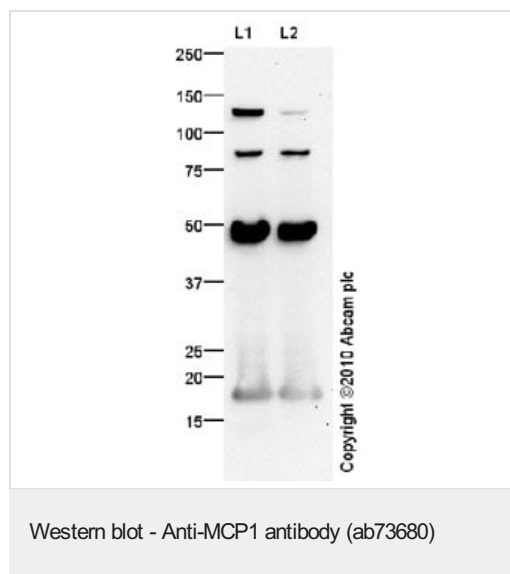
功能 Chemotactic factor that attracts monocytes and basophils but not neutrophils or eosinophils. Augments monocyte anti-tumor activity. Has been implicated in the pathogenesis of diseases characterized by monocytic infiltrates, like psoriasis, rheumatoid arthritis or atherosclerosis. May be involved in the recruitment of monocytes into the arterial wall during the disease process of atherosclerosis.

序列相似性 Belongs to the intercrine beta (chemokine CC) family.

翻译后修饰 Processing at the N-terminus can regulate receptor and target cell selectivity. Deletion of the N-terminal residue converts it from an activator of basophil to an eosinophil chemoattractant.

细胞定位 Secreted.

图片



All lanes : Anti-MCP1 antibody (ab73680) at 1 µg/ml

Lane 1 : HeLa (Human epithelial carcinoma cell line) Whole Cell Lysate

Lane 2 : HCT 116 (Human Colorectal Carcinoma) Whole Cell Lysate

Lysates/proteins at 10 µg per lane.

Secondary

All lanes : Goat Anti-Rabbit IgG H&L (HRP) (**ab97051**) at 1/10000 dilution

Developed using the ECL technique.

Performed under reducing conditions.

Predicted band size: 11 kDa

Observed band size: 17 kDa

Additional bands at: 125 kDa, 50 kDa (possible glycosylated form), 80 kDa. We are unsure as to the identity of these extra bands.

The expression profile observed is consistent with what has been described in the literature (e.g. PMID 12957789). We believe the 50kDa band is a glycosylated form of Human MCP1.

Please note: All products are "FOR RESEARCH USE ONLY. NOT FOR USE IN DIAGNOSTIC PROCEDURES"

Our Abpromise to you: Quality guaranteed and expert technical support

- Replacement or refund for products not performing as stated on the datasheet
- Valid for 12 months from date of delivery
- Response to your inquiry within 24 hours

- We provide support in Chinese, English, French, German, Japanese and Spanish
- Extensive multi-media technical resources to help you
- We investigate all quality concerns to ensure our products perform to the highest standards

If the product does not perform as described on this datasheet, we will offer a refund or replacement. For full details of the Abpromise, please visit <https://www.abcam.cn/abpromise> or contact our technical team.

Terms and conditions

- Guarantee only valid for products bought direct from Abcam or one of our authorized distributors