

Anti-MCP1 antibody [2H5] ab21396

★★★★★ [1 Abreviews](#) [12 References](#) [1 图像](#)

概述

产品名称	Anti-MCP1抗体[2H5]
描述	亚美尼亚仓鼠单克隆抗体[2H5] to MCP1
宿主	Armenian hamster
特异性	This antibody is specific to mouse MCP-1.
经测试应用	适用于: ELISA
种属反应性	与反应: Recombinant fragment
免疫原	Recombinant full length protein corresponding to Mouse MCP1. CHO expressed, recombinant mouse MCP-1.
阳性对照	IHC- central nervous system of rats or mice with experimental autoimmune encephalomyelitis.
常规说明	<p>The Life Science industry has been in the grips of a reproducibility crisis for a number of years. Abcam is leading the way in addressing this with our range of recombinant monoclonal antibodies and knockout edited cell lines for gold-standard validation. Please check that this product meets your needs before purchasing.</p> <p>If you have any questions, special requirements or concerns, please send us an inquiry and/or contact our Support team ahead of purchase. Recommended alternatives for this product can be found below, along with publications, customer reviews and Q&As</p>

性能

形式	Liquid
存放说明	Shipped at 4°C. Store at +4°C short term (1-2 weeks). Store at -20°C or -80°C. Avoid freeze / thaw cycle.
存储溶液	pH: 7.20 Preservative: 0.09% Sodium azide Constituent: PBS
纯度	Affinity purified
纯化说明	Purity >95% by SDS-PAGE.
克隆	单克隆
克隆编号	2H5
同种型	IgG

应用

The Abpromise guarantee **Abpromise™**承诺保证使用ab21396于以下的经测试应用

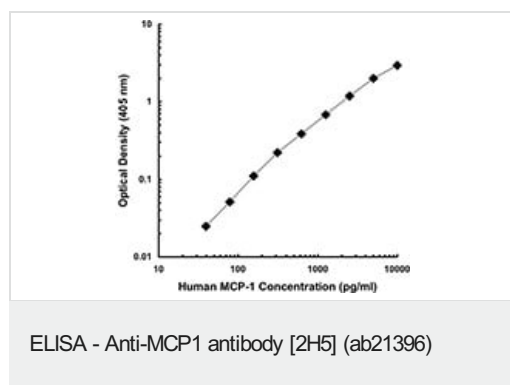
“应用说明”部分 下显示的仅为推荐的起始稀释度;实际最佳的稀释度/浓度应由使用者检定。

应用	Ab评论	说明
ELISA	★★★★★ (1)	Use a concentration of 5 - 10 µg/ml. To obtain a linear standard curve, serial dilutions of MCP-1 recombinant protein ranging from 2000 to 15 pg/ml are recommended for each ELISA plate.

靶标

功能	Chemotactic factor that attracts monocytes and basophils but not neutrophils or eosinophils. Augments monocyte anti-tumor activity. Has been implicated in the pathogenesis of diseases characterized by monocytic infiltrates, like psoriasis, rheumatoid arthritis or atherosclerosis. May be involved in the recruitment of monocytes into the arterial wall during the disease process of atherosclerosis.
序列相似性	Belongs to the intercrine beta (chemokine CC) family.
翻译后修饰	Processing at the N-terminus can regulate receptor and target cell selectivity. Deletion of the N-terminal residue converts it from an activator of basophil to an eosinophil chemoattractant.
细胞定位	Secreted.

图片



Ab21396 staining human MCP-1 by ELISA. Image shows a standard curve obtained with increasing concentrations of human MCP-1.

Please note: All products are "FOR RESEARCH USE ONLY. NOT FOR USE IN DIAGNOSTIC PROCEDURES"

Our Abpromise to you: Quality guaranteed and expert technical support

- Replacement or refund for products not performing as stated on the datasheet
- Valid for 12 months from date of delivery
- Response to your inquiry within 24 hours

- We provide support in Chinese, English, French, German, Japanese and Spanish
- Extensive multi-media technical resources to help you
- We investigate all quality concerns to ensure our products perform to the highest standards

If the product does not perform as described on this datasheet, we will offer a refund or replacement. For full details of the Abpromise, please visit <https://www.abcam.cn/abpromise> or contact our technical team.

Terms and conditions

- Guarantee only valid for products bought direct from Abcam or one of our authorized distributors