



Anti-MCM4 (phospho S54) antibody ab74014

1 图像

概述

产品名称	Anti-MCM4 (phospho S54)抗体
描述	兔多克隆抗体to MCM4 (phospho S54)
宿主	Rabbit
经测试应用	适用于: WB
种属反应性	与反应: African green monkey 预测可用于: Mouse 
免疫原	Synthetic peptide corresponding to Human MCM4 (phospho S54).  Run BLAST with ExPASy  Run BLAST with NCBI
阳性对照	Extracts from COS-7 cells treated with nocodazole (1uM, 16hours).
常规说明	<p>The Life Science industry has been in the grips of a reproducibility crisis for a number of years. Abcam is leading the way in addressing this with our range of recombinant monoclonal antibodies and knockout edited cell lines for gold-standard validation. Please check that this product meets your needs before purchasing.</p> <p>If you have any questions, special requirements or concerns, please send us an inquiry and/or contact our Support team ahead of purchase. Recommended alternatives for this product can be found below, along with publications, customer reviews and Q&As</p>

性能

形式	Liquid
存放说明	Shipped at 4°C. Upon delivery aliquot and store at -20°C. Avoid repeated freeze / thaw cycles.
存储溶液	pH: 7.40 Preservative: 0.02% Sodium azide Constituents: 50% Glycerol (glycerin, glycerine), 0.87% Sodium chloride, PBS
纯度	Without Mg ²⁺ and Ca ²⁺ Immunogen affinity purified
纯化说明	ab74014 was affinity-purified from rabbit antiserum by affinity-chromatography using epitope-specific phosphopeptide. The antibody against non-phosphopeptide was removed by chromatography using non-phosphopeptide corresponding to the phosphorylation site.
克隆	多克隆

同种型lgG

应用

The Abpromise guarantee **Abpromise™**承诺保证使用ab74014于以下的经测试应用

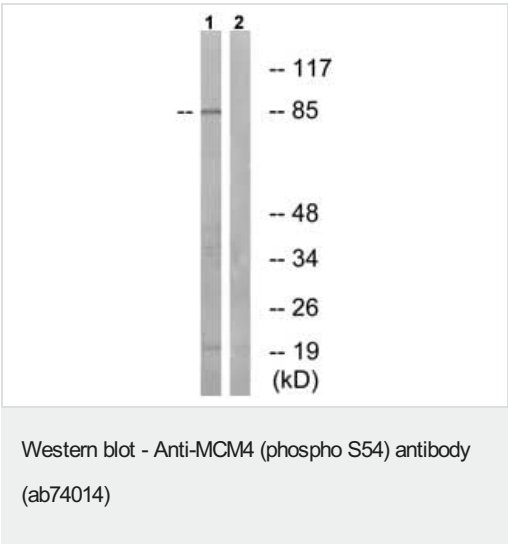
“应用说明”部分 下显示的仅为推荐的起始稀释度;实际最佳的稀释度/浓度应由使用者检定。

应用	Ab评论	说明
WB		1/500 - 1/1000. Predicted molecular weight: 96 kDa.

靶标

功能	Acts as component of the MCM2-7 complex (MCM complex) which is the putative replicative helicase essential for 'once per cell cycle' DNA replication initiation and elongation in eukaryotic cells. The active ATPase sites in the MCM2-7 ring are formed through the interaction surfaces of two neighboring subunits such that a critical structure of a conserved arginine finger motif is provided in trans relative to the ATP-binding site of the Walker A box of the adjacent subunit. The six ATPase active sites, however, are likely to contribute differentially to the complex helicase activity.
序列相似性	Belongs to the MCM family. Contains 1 MCM domain.
细胞定位	Nucleus.

图片



All lanes : Anti-MCM4 (phospho S54) antibody (ab74014) at 1/500 dilution

Lane 1 : Extracts from COS-7 cells treated with nocodazole (1uM, 16hours)

Lane 2 : Extracts from COS-7 cells treated with nocodazole (1uM, 16hours) with immunising phosphopeptide at 5 µg

Lysates/proteins at 5 µg per lane.

Predicted band size: 96 kDa

Observed band size: 88 kDa

Additional bands at: 20 kDa. We are unsure as to the identity of these extra bands.

Please note: All products are "FOR RESEARCH USE ONLY. NOT FOR USE IN DIAGNOSTIC PROCEDURES"

Our Abpromise to you: Quality guaranteed and expert technical support

- Replacement or refund for products not performing as stated on the datasheet
- Valid for 12 months from date of delivery
- Response to your inquiry within 24 hours

- We provide support in Chinese, English, French, German, Japanese and Spanish
- Extensive multi-media technical resources to help you
- We investigate all quality concerns to ensure our products perform to the highest standards

If the product does not perform as described on this datasheet, we will offer a refund or replacement. For full details of the Abpromise, please visit <https://www.abcam.cn/abpromise> or contact our technical team.

Terms and conditions

- Guarantee only valid for products bought direct from Abcam or one of our authorized distributors