


Anti-MCM4 antibody [EPR5245] ab124836

重组 RabMAb

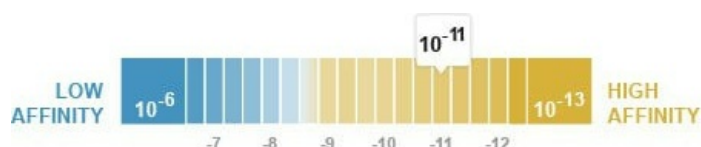
2 References 4 图像

概述

产品名称	Anti-MCM4抗体[EPR5245]
描述	兔单克隆抗体[EPR5245] to MCM4
宿主	Rabbit
经测试应用	适用于: Flow Cyt (Intra), WB 不适用于: ICC/IF or IHC-P
种属反应性	与反应: Human 预测可用于: Mouse 
免疫原	Synthetic peptide within Human MCM4 aa 800-900 (C terminal). The exact sequence is proprietary.
阳性对照	HeLa, Molt-4, and A431 cell lysates and Molt-4 cells.
常规说明	This product is a recombinant monoclonal antibody, which offers several advantages including: <ul style="list-style-type: none"> - High batch-to-batch consistency and reproducibility - Improved sensitivity and specificity - Long-term security of supply - Animal-free production For more information see here . Our RabMAb [®] technology is a patented hybridoma-based technology for making rabbit monoclonal antibodies. For details on our patents, please refer to RabMAb[®] patents . Rat: We have preliminary internal testing data to indicate this antibody may not react with this species. Please contact us for more information.

性能

形式	Liquid
存放说明	Shipped at 4°C. Store at -20°C. Stable for 12 months at -20°C.
解离常数 (K_D)	K _D = 1.80 x 10 ⁻¹¹ M



[Learn more about K_D](#)

存储溶液	pH: 7.20 Preservative: 0.05% Sodium azide Constituents: 40% Glycerol (glycerin, glycerine), 9.85% Tris glycine, 50% Tissue culture supernatant
纯度	Protein A purified
克隆	单克隆
克隆编号	EPR5245
同种型	IgG

应用

The Abpromise guarantee

Abpromise™ 承诺保证使用 ab124836 于以下的经测试应用

“应用说明”部分下显示的仅为推荐的起始稀释度；实际最佳的稀释度/浓度应由使用者检定。

应用	Ab评论	说明
Flow Cyt (Intra)		1/100 - 1/500. ab172730 - Rabbit monoclonal IgG, is suitable for use as an isotype control with this antibody.
WB		1/50000 - 1/200000. Predicted molecular weight: 97 kDa.

应用说明

Is unsuitable for ICC/IF or IHC-P.

靶标

功能

Acts as component of the MCM2-7 complex (MCM complex) which is the putative replicative helicase essential for 'once per cell cycle' DNA replication initiation and elongation in eukaryotic cells. The active ATPase sites in the MCM2-7 ring are formed through the interaction surfaces of two neighboring subunits such that a critical structure of a conserved arginine finger motif is provided in trans relative to the ATP-binding site of the Walker A box of the adjacent subunit. The six ATPase active sites, however, are likely to contribute differentially to the complex helicase activity.

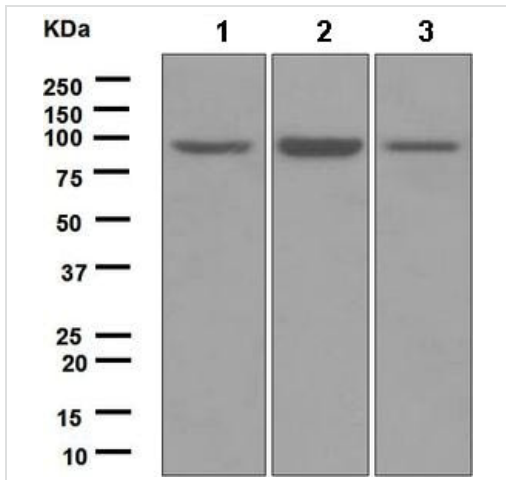
序列相似性

Belongs to the MCM family.
Contains 1 MCM domain.

细胞定位

Nucleus.

图片



Western blot - Anti-MCM4 antibody [EPR5245]
(ab124836)

All lanes : Anti-MCM4 antibody [EPR5245] (ab124836) at 1/50000 dilution

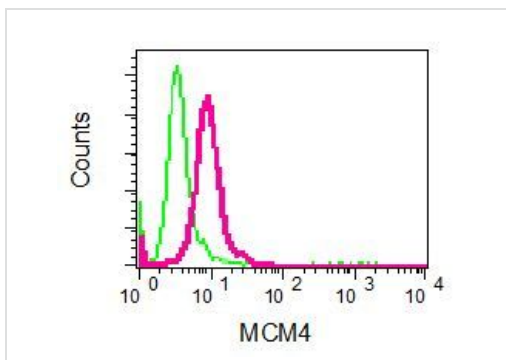
Lane 1 : HeLa cell lysate

Lane 2 : Molt-4 cell lysate

Lane 3 : A431 cell lysate

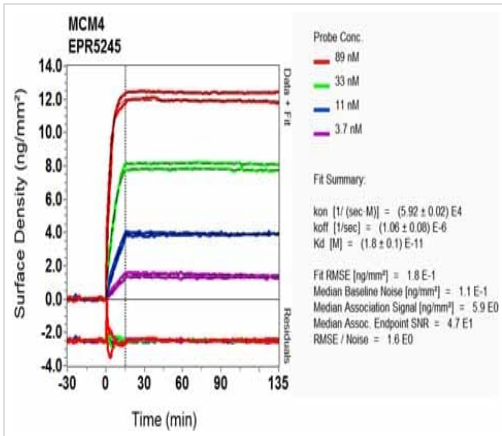
Lysates/proteins at 10 µg per lane.

Predicted band size: 97 kDa



Flow Cytometry (Intracellular) - Anti-MCM4 antibody
[EPR5245] (ab124836)

Intracellular flow cytometric analysis of permeabilized Molt-4 cells using anti-MCM4 in red (ab124836) or a rabbit IgG in green (negative).



OI-RD Scanning - Anti-MCM4 antibody [EPR5245]
(ab124836)

Equilibrium disassociation constant (K_D)

Learn more about K_D

[Click here to learn more about \$K_D\$](#)

Why choose a recombinant antibody?

Research with confidence
Consistent and reproducible results

Long-term and scalable supply
Recombinant technology

Success from the first experiment
Confirmed specificity

Ethical standards compliant
Animal-free production

Anti-MCM4 antibody [EPR5245] (ab124836)

Please note: All products are "FOR RESEARCH USE ONLY. NOT FOR USE IN DIAGNOSTIC PROCEDURES"

Our Abpromise to you: Quality guaranteed and expert technical support

- Replacement or refund for products not performing as stated on the datasheet
- Valid for 12 months from date of delivery
- Response to your inquiry within 24 hours
- We provide support in Chinese, English, French, German, Japanese and Spanish
- Extensive multi-media technical resources to help you
- We investigate all quality concerns to ensure our products perform to the highest standards

If the product does not perform as described on this datasheet, we will offer a refund or replacement. For full details of the Abpromise, please visit <https://www.abcam.cn/abpromise> or contact our technical team.

Terms and conditions

- Guarantee only valid for products bought direct from Abcam or one of our authorized distributors