


# Anti-MCM2 (phospho S40 + S41) antibody ab70371

**3 References**   **3 图像**

### 概述

产品名称	Anti-MCM2 (phospho S40 + S41)抗体
描述	兔多克隆抗体to MCM2 (phospho S40 + S41)
宿主	Rabbit
经测试应用	适用于: IHC-P, WB, Flow Cyt (Intra)
种属反应性	与反应: Human 预测可用于: Mouse, Rat, Rabbit, Horse, Guinea pig, Cow, Dog, Pig, Xenopus laevis, Chimpanzee, Rhesus monkey, Gorilla, Orangutan, Xenopus tropicalis, Platypus 
免疫原	Synthetic peptide corresponding to Human MCM2 (phospho S40 + S41).
阳性对照	Whole cell lysate from asynchronous 293T cells
常规说明	<p>The Life Science industry has been in the grips of a reproducibility crisis for a number of years. Abcam is leading the way in addressing this with our range of recombinant monoclonal antibodies and knockout edited cell lines for gold-standard validation. Please check that this product meets your needs before purchasing.</p> <p>If you have any questions, special requirements or concerns, please send us an inquiry and/or contact our Support team ahead of purchase. Recommended alternatives for this product can be found below, along with publications, customer reviews and Q&amp;As</p>

### 性能

形式	Liquid
存放说明	Shipped at 4°C. Upon delivery aliquot and store at -20°C. Avoid freeze / thaw cycles.
存储溶液	<p>pH: 6.8</p> <p>Preservative: 0.09% Sodium azide</p> <p>Constituents: 0.1% BSA, Tris buffered saline</p>
纯度	Immunogen affinity purified
克隆	多克隆
同种型	IgG

### 应用

## The Abpromise guarantee

**Abpromise™** 承诺保证使用 ab70371 于以下的经测试应用

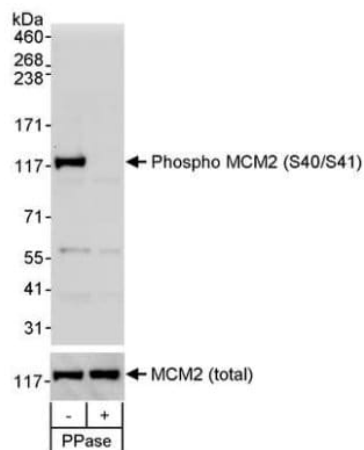
“应用说明”部分 下显示的仅为推荐的起始稀释度;实际最佳的稀释度/浓度应由使用者检定。

应用	Ab 评论	说明
IHC-P		1/100 - 1/500. Perform heat mediated antigen retrieval with citrate buffer pH 6 before commencing with IHC staining protocol.
WB		1/1000 - 1/5000. Detects a band of approximately 117 kDa (predicted molecular weight: 100 kDa).
Flow Cyt (Intra)		Use 0.1 µg for 10 <sup>6</sup> cells. 0.1 µg per 1 X 10 <sup>6</sup> cells in a 150 µl volume. <b>ab171870</b> - Rabbit polyclonal IgG, is suitable for use as an isotype control with this antibody.

## 靶标

功能	Acts as component of the MCM2-7 complex (MCM complex) which is the putative replicative helicase essential for 'once per cell cycle' DNA replication initiation and elongation in eukaryotic cells. The active ATPase sites in the MCM2-7 ring are formed through the interaction surfaces of two neighboring subunits such that a critical structure of a conserved arginine finger motif is provided in trans relative to the ATP-binding site of the Walker A box of the adjacent subunit. The six ATPase active sites, however, are likely to contribute differentially to the complex helicase activity. Required for the entry in S phase and for cell division.
序列相似性	Belongs to the MCM family. Contains 1 MCM domain.
翻译后修饰	Phosphorylated on Ser-108 by ATR in proliferating cells. Ser-108 phosphorylation is increased by genotoxic agents. Ser-40 is mediated by the CDC7-DBF4 and CDC7-DBF4B complexes, while Ser-53 phosphorylation is only mediated by the CDC7-DBF4 complex. Phosphorylation by the CDC7-DBF4 complex during G1/S phase is required for the initiation of DNA replication.
细胞定位	Nucleus.

## 图片



Western blot - Anti-MCM2 (phospho S40 + S41) antibody (ab70371)

**All lanes :** Anti-MCM2 (phospho S40 + S41) antibody (ab70371) at 0.1  $\mu\text{g/ml}$

**Lane 1 :** Whole cell lysate from asynchronous 293T cells

**Lane 2 :** Whole cell lysate from asynchronous 293T cells treated with a phosphatase

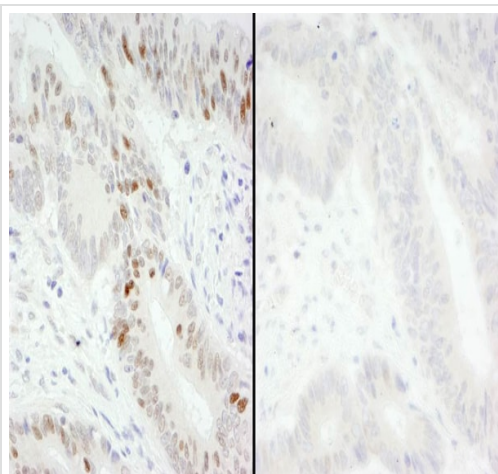
Lysates/proteins at 50  $\mu\text{g}$  per lane.

**Predicted band size:** 100 kDa

**Observed band size:** 117 kDa

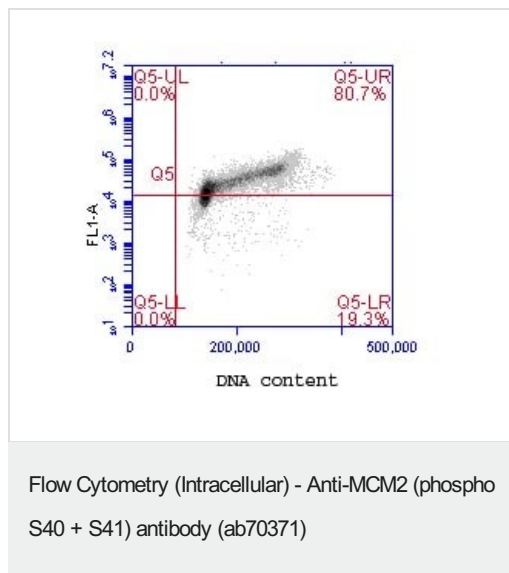
**Additional bands at:** 60 kDa. We are unsure as to the identity of these extra bands.

The bottom panel shows total MCM2 staining; the blot was stripped and then blotted with rabbit anti-total MCM2 antibody at 0.1  $\mu\text{g/ml}$ . Detection: Chemiluminescence with exposure times of 30 seconds for upper and lower panel.



Immunohistochemistry (Formalin/PFA-fixed paraffin-embedded sections) - Anti-MCM2 (phospho S40 + S41) antibody (ab70371)

Immunohistochemistry (Formalin/PFA-fixed paraffin-embedded sections) analysis of human colon carcinoma mock phosphatase treated section (left) and calf intestinal phosphatase-treated section (right) tissues labelling MCM2 (phospho S40 + S41) with ab70371 at 1/200 (1 $\mu\text{g/ml}$ ). Detection: DAB.



ab70371 at 0.1µg/ml staining MCM2 (phospho S40 + S41) by Flow Cytometry.  $1 \times 10^6$  jurkat cells were fixed in 1.5% PFA and permeabilized in 90% MeOH. DNA content was simultaneously analyzed via PI stain.

**Please note:** All products are "FOR RESEARCH USE ONLY. NOT FOR USE IN DIAGNOSTIC PROCEDURES"

### Our Abpromise to you: Quality guaranteed and expert technical support

- Replacement or refund for products not performing as stated on the datasheet
- Valid for 12 months from date of delivery
- Response to your inquiry within 24 hours
- We provide support in Chinese, English, French, German, Japanese and Spanish
- Extensive multi-media technical resources to help you
- We investigate all quality concerns to ensure our products perform to the highest standards

If the product does not perform as described on this datasheet, we will offer a refund or replacement. For full details of the Abpromise, please visit <https://www.abcam.cn/abpromise> or contact our technical team.

### Terms and conditions

- Guarantee only valid for products bought direct from Abcam or one of our authorized distributors