


Anti-MCM2 (phospho S27) antibody [EPR4119] ab109459

重组 RabMAb

6 图像

概述

| | |
|--------------|--|
| 产品名称 | Anti-MCM2 (phospho S27)抗体[EPR4119] |
| 描述 | 兔单克隆抗体[EPR4119] to MCM2 (phospho S27) |
| 宿主 | Rabbit |
| 经测试应用 | 适用于: WB, IP, IHC-P, ICC/IF 不适用于: Flow Cyt |
| 种属反应性 | 与反应: Human 预测可用于: Mouse, Rat  |
| 免疫原 | Synthetic peptide. This information is proprietary to Abcam and/or its suppliers. |
| 阳性对照 | HeLa whole cell lysate (ab150035) and HeLa cells. Human cervical carcinoma tissue. Human tonsil tissue. |
| 常规说明 | This product is a recombinant monoclonal antibody, which offers several advantages including: <ul style="list-style-type: none"> - High batch-to-batch consistency and reproducibility - Improved sensitivity and specificity - Long-term security of supply - Animal-free production For more information see here . Our RabMAb [®] technology is a patented hybridoma-based technology for making rabbit monoclonal antibodies. For details on our patents, please refer to RabMAb[®] patents . |

性能

| | |
|-------------|--|
| 形式 | Liquid |
| 存放说明 | Shipped at 4°C. Store at -20°C. |
| 存储溶液 | pH: 7.20 Preservative: 0.05% Sodium azide Constituents: 0.1% BSA, 40% Glycerol (glycerin, glycerine), 9.85% Tris glycine, 50% Tissue culture supernatant |
| 纯度 | Protein A purified |
| 克隆 | 单克隆 |

克隆编号 EPR4119
同种型 IgG

应用

The Abpromise guarantee **Abpromise™**承诺保证使用ab109459于以下的经测试应用

“应用说明”部分 下显示的仅为推荐的起始稀释度;实际最佳的稀释度/浓度应由使用者检定。

| 应用 | Ab评论 | 说明 |
|--------|------|--|
| WB | | 1/10000 - 1/50000. Predicted molecular weight: 102 kDa. |
| IP | | 1/10 - 1/100. |
| IHC-P | | 1/100 - 1/250. Perform heat mediated antigen retrieval with citrate buffer pH 6 before commencing with IHC staining protocol. Heat up to 98 degrees C, below boiling, and then let cool for 10-20 min. |
| ICC/IF | | 1/100 - 1/250. |

应用说明 Is unsuitable for Flow Cyt.

靶标

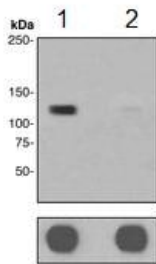
功能 Acts as component of the MCM2-7 complex (MCM complex) which is the putative replicative helicase essential for 'once per cell cycle' DNA replication initiation and elongation in eukaryotic cells. The active ATPase sites in the MCM2-7 ring are formed through the interaction surfaces of two neighboring subunits such that a critical structure of a conserved arginine finger motif is provided in trans relative to the ATP-binding site of the Walker A box of the adjacent subunit. The six ATPase active sites, however, are likely to contribute differentially to the complex helicase activity. Required for the entry in S phase and for cell division.

序列相似性 Belongs to the MCM family.
Contains 1 MCM domain.

翻译后修饰 Phosphorylated on Ser-108 by ATR in proliferating cells. Ser-108 proliferation is increased by genotoxic agents. Ser-40 is mediated by the CDC7-DBF4 and CDC7-DBF4B complexes, while Ser-53 phosphorylation is only mediated by the CDC7-DBF4 complex. Phosphorylation by the CDC7-DBF4 complex during G1/S phase is required for the initiation of DNA replication.

细胞定位 Nucleus.

图片



Western blot - Anti-MCM2 (phospho S27) antibody [EPR4119] (ab109459)

All lanes : Anti-MCM2 (phospho S27) antibody [EPR4119] (ab109459) at 1/10000 dilution

Lane 1 : HeLa cell lysate untreated with alkaline phosphatase

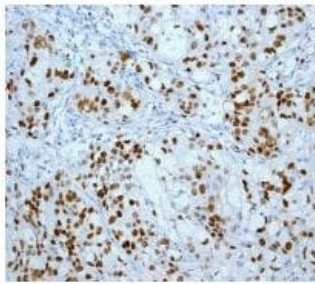
Lane 2 : HeLa cell lysate treated with alkaline phosphatase

Lysates/proteins at 10 µg per lane.

Secondary

All lanes : HRP labelled goat anti-rabbit at 1/2000 dilution

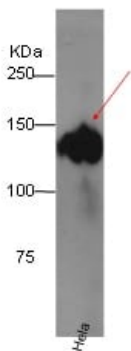
Predicted band size: 102 kDa



Immunohistochemistry (Formalin/PFA-fixed paraffin-embedded sections) - Anti-MCM2 (phospho S27) antibody [EPR4119] (ab109459)

ab109459 at 1/100 dilution staining MCM2 (phospho S27) in paraffin-embedded Human cervical carcinoma tissue by Immunohistochemistry.

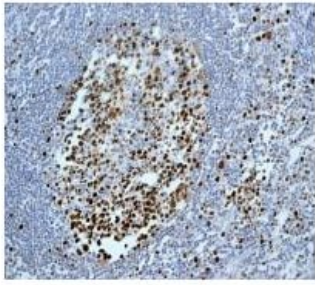
Perform heat mediated antigen retrieval with citrate buffer pH 6 before commencing with IHC staining protocol.



Immunoprecipitation - Anti-MCM2 (phospho S27) antibody [EPR4119] (ab109459)

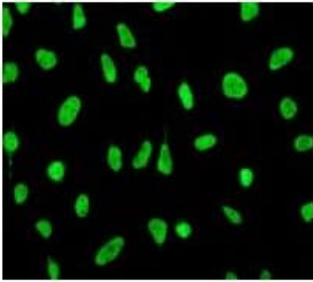
MCM2 was immunoprecipitated from HeLa (Human epithelial cell line from cervix adenocarcinoma) with ab109459 at 1/100 dilution.

Exposure time: 10 second.



Immunohistochemistry (Formalin/PFA-fixed paraffin-embedded sections) - Anti-MCM2 (phospho S27) antibody [EPR4119] (ab109459)

ab109459 at 1/100 dilution staining MCM2 (phospho S27) in paraffin-embedded Human tonsil tissue by Immunohistochemistry. Perform heat mediated antigen retrieval with citrate buffer pH 6 before commencing with IHC staining protocol.



Immunocytochemistry/ Immunofluorescence - Anti-MCM2 (phospho S27) antibody [EPR4119] (ab109459)

ab109459 at 1/100 dilution staining MCM2 (phospho S27) in HeLa cells by Immunofluorescence.

Why choose a recombinant antibody?

| | |
|--|--|
|  <p>Research with confidence Consistent and reproducible results</p> |  <p>Long-term and scalable supply Recombinant technology</p> |
|  <p>Success from the first experiment Confirmed specificity</p> |  <p>Ethical standards compliant Animal-free production</p> |

Anti-MCM2 (phospho S27) antibody [EPR4119] (ab109459)

Please note: All products are "FOR RESEARCH USE ONLY. NOT FOR USE IN DIAGNOSTIC PROCEDURES"

Our Abpromise to you: Quality guaranteed and expert technical support

- Replacement or refund for products not performing as stated on the datasheet

- Valid for 12 months from date of delivery
- Response to your inquiry within 24 hours
- We provide support in Chinese, English, French, German, Japanese and Spanish
- Extensive multi-media technical resources to help you
- We investigate all quality concerns to ensure our products perform to the highest standards

If the product does not perform as described on this datasheet, we will offer a refund or replacement. For full details of the Abpromise, please visit <https://www.abcam.cn/abpromise> or contact our technical team.

Terms and conditions

- Guarantee only valid for products bought direct from Abcam or one of our authorized distributors