

Anti-MCL1 antibody ab28147

8 References [3 图像](#)

概述

产品名称	Anti-MCL1抗体
描述	兔多克隆抗体to MCL1
宿主	Rabbit
特异性	This antibody detects an ~42/43 kDa protein doublet, corresponding to the expected molecular mass of Mcl1 on SDS-PAGE immunoblots. The antibody specificity is confirmed by peptide inhibition studies. An additional protein at ~33kDa may also be detected. Other additional proteins may also be seen in some samples.
经测试应用	适用于: IHC-P, WB, ICC/IF
种属反应性	与反应: Rabbit, Guinea pig, Dog, Human, Pig, Monkey
免疫原	Synthetic peptide corresponding to Human MCL1 aa 121-139 conjugated to Keyhole Limpet Haemocyanin (KLH). Sequence: SPEEELDGYEPEPLGKRPA Run BLAST with Run BLAST with
阳性对照	ICC/IF: Human HeLa cells; IHC-P: Human breast cancer tissue; WB: HeLa, MDCK and RK-13 whole cell lysates.
常规说明	<p>The Life Science industry has been in the grips of a reproducibility crisis for a number of years. Abcam is leading the way in addressing this with our range of recombinant monoclonal antibodies and knockout edited cell lines for gold-standard validation. Please check that this product meets your needs before purchasing.</p> <p>If you have any questions, special requirements or concerns, please send us an inquiry and/or contact our Support team ahead of purchase. Recommended alternatives for this product can be found below, along with publications, customer reviews and Q&As</p>

性能

形式	Liquid
存放说明	Shipped at 4°C. Store at +4°C short term (1-2 weeks). Upon delivery aliquot. Store at -20°C or -80°C. Avoid freeze / thaw cycle.
存储溶液	Preservative: 0.09% Sodium azide Constituent: PBS

纯度	Immunogen affinity purified
克隆	多克隆
同种型	IgG

应用

The Abpromise guarantee **Abpromise™**承诺保证使用ab28147于以下的经测试应用

“应用说明”部分下显示的仅为推荐的起始稀释度;实际最佳的稀释度/浓度应由使用者检定。

应用	Ab评论	说明
IHC-P		Use at an assay dependent concentration.
WB		Use a concentration of 0.1 µg/ml. Predicted molecular weight: 42-43 kDa. 0.1 µg/ml was sufficient for detection of Mcl1 in 20µg of HeLa Heat Shocked Cell Lysate by ECL immunoblot analysis.
ICC/IF		Use at an assay dependent concentration.

靶标

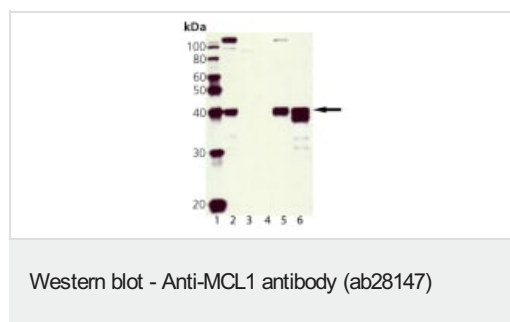
功能 Involved in the regulation of apoptosis versus cell survival, and in the maintenance of viability but not of proliferation. Mediates its effects by interactions with a number of other regulators of apoptosis. Isoform 1 inhibits apoptosis. Isoform 2 promotes apoptosis.

序列相似性 Belongs to the Bcl-2 family.

翻译后修饰 Cleaved by CASP3 during apoptosis. In intact cells cleavage occurs preferentially after Asp-127, yielding a pro-apoptotic 28 kDa C-terminal fragment.
Rapidly degraded in the absence of phosphorylation on Thr-163 in the PEST region.
Phosphorylated on Thr-163. Treatment with taxol or okadaic acid induces phosphorylation on additional sites.

细胞定位 Membrane. Cytoplasm. Mitochondrion. Nucleus > nucleoplasm. Cytoplasmic, associated with mitochondria.

图片



All lanes : Anti-MCL1 antibody (ab28147) at 1/500 dilution

Lane 2 : HeLa whole cell lysate

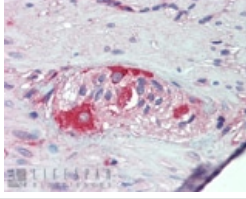
Lane 3 : 3T3 whole cell lysate

Lane 4 : PC-12 whole cell lysate

Lane 5 : MDCK whole cell lysate

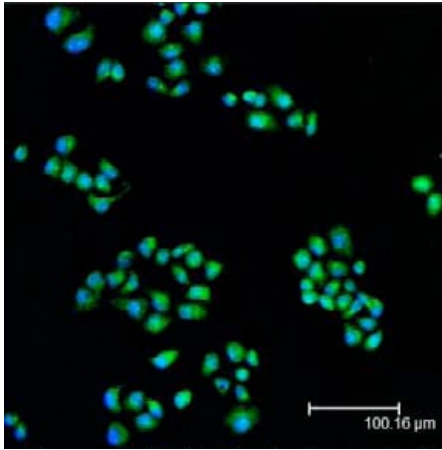
Lane 6 : RK-13 whole cell lysate

Predicted band size: 42-43 kDa



Immunohistochemistry (Formalin/PFA-fixed paraffin-embedded sections) - Anti-MCL1 antibody (ab28147)

ab28147 staining MCL1 in human breast cancer tissue cells by Immunohistochemistry



Immunocytochemistry/ Immunofluorescence - Anti-MCL1 antibody (ab28147)

ab28147 staining MCL1 in human HeLa cells by Immunocytochemistry/ immunofluorescence.

Please note: All products are "FOR RESEARCH USE ONLY. NOT FOR USE IN DIAGNOSTIC PROCEDURES"

Our Abpromise to you: Quality guaranteed and expert technical support

- Replacement or refund for products not performing as stated on the datasheet
- Valid for 12 months from date of delivery
- Response to your inquiry within 24 hours
- We provide support in Chinese, English, French, German, Japanese and Spanish
- Extensive multi-media technical resources to help you
- We investigate all quality concerns to ensure our products perform to the highest standards

If the product does not perform as described on this datasheet, we will offer a refund or replacement. For full details of the Abpromise, please visit <https://www.abcam.cn/abpromise> or contact our technical team.

Terms and conditions

- Guarantee only valid for products bought direct from Abcam or one of our authorized distributors