


### Anti-Matrin 3 antibody ab84422

★★★★★ [2 Abreviews](#) [6 References](#) [5 图像](#)

#### 概述

<b>产品名称</b>	Anti-Matrin 3抗体
<b>描述</b>	兔多克隆抗体to Matrin 3
<b>宿主</b>	Rabbit
<b>经测试应用</b>	<b>适用于:</b> IHC-P, ICC/IF
<b>种属反应性</b>	<b>与反应:</b> Mouse, Human <b>预测可用于:</b> Chimpanzee, Rhesus monkey, Chinese hamster, Orangutan, Bat 
<b>免疫原</b>	Synthetic peptide designed within residues: GFYCKLCSLF YTNEEVAKNT HCSSLPHYQK LKKFLNKLAE ERRQKKET, corresponding to C terminal amino acids 800-847 of Human Matrin 3 (NP_061322.2) <a href="#">Run BLAST with ExPASy</a> <a href="#">Run BLAST with NCBI</a>
<b>阳性对照</b>	IHC: Human: breast carcinoma, colon adenocarcinoma. Mouse: squamous cell carcinoma.
<b>常规说明</b>	The Life Science industry has been in the grips of a reproducibility crisis for a number of years. Abcam is leading the way in addressing this with our range of recombinant monoclonal antibodies and knockout edited cell lines for gold-standard validation. Please check that this product meets your needs before purchasing.  If you have any questions, special requirements or concerns, please send us an inquiry and/or contact our Support team ahead of purchase. Recommended alternatives for this product can be found below, along with publications, customer reviews and Q&As

#### 性能

<b>形式</b>	Liquid
<b>存放说明</b>	Shipped at 4°C. Upon delivery aliquot and store at -20°C. Avoid freeze / thaw cycles.
<b>存储溶液</b>	pH: 6.8 Preservative: 0.09% Sodium azide Constituents: 0.1% BSA, Tris buffered saline
<b>纯度</b>	Immunogen affinity purified
<b>克隆</b>	多克隆
<b>同种型</b>	IgG

## 应用

**The Abpromise guarantee**      **Abpromise™** 承诺保证使用 ab84422 于以下的经测试应用

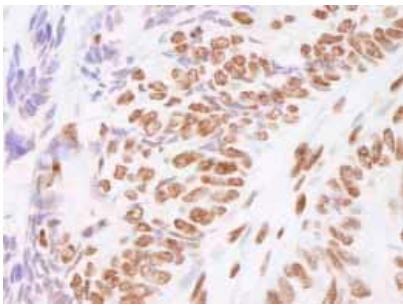
“应用说明”部分 下显示的仅为推荐的起始稀释度;实际最佳的稀释度/浓度应由使用者检定。

应用	Ab评论	说明
IHC-P		1/100 - 1/500. Perform heat mediated antigen retrieval before commencing with IHC staining protocol. Note: expected to work on frozen sections.
ICC/IF	★★★★★ (2)	1/100.

## 靶标

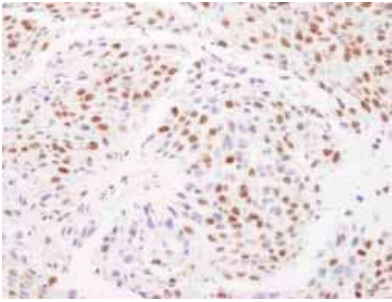
<b>功能</b>	May play a role in transcription or may interact with other nuclear matrix proteins to form the internal fibrogranular network. In association with the SFPQ-NONO heteromer may play a role in nuclear retention of defective RNAs.
<b>疾病相关</b>	Defects in MATR3 are the cause of myopathy distal type 2 (MPD2) [MIM:606070]; also called vocal cord and pharyngeal dysfunction with distal myopathy (VCPDM). MPD2 is a muscular disorder characterized by distal weakness, with onset in hands and feet, associated with vocal cord and pharyngeal weakness causing a nasal voice and swallowing disorders.
<b>序列相似性</b>	Contains 1 matrin-type zinc finger. Contains 2 RRM (RNA recognition motif) domains.
<b>细胞定位</b>	Nucleus matrix.

## 图片



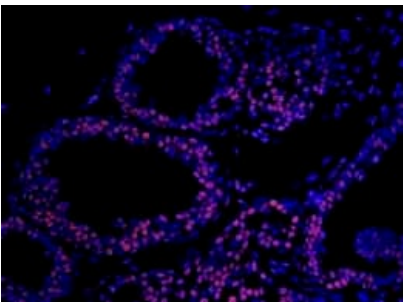
Immunohistochemistry analysis of formalin-fixed, paraffin-embedded Human colon adenocarcinoma using 1/250 ab84422, followed by DAB staining.

Immunohistochemistry (Formalin/PFA-fixed paraffin-embedded sections) - Anti-Matrin 3 antibody (ab84422)



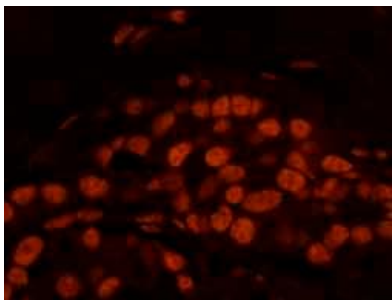
Immunohistochemistry (Formalin/PFA-fixed paraffin-embedded sections) - Anti-Matrin 3 antibody (ab84422)

Immunohistochemistry analysis of formalin-fixed, paraffin-embedded Mouse squamous cell carcinoma using 1/250 ab84422, followed by DAB staining.



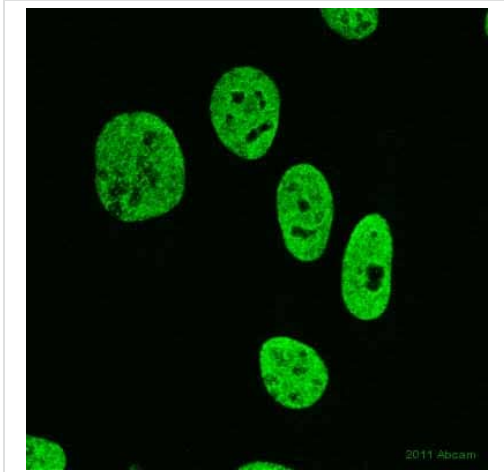
Immunohistochemistry (Formalin/PFA-fixed paraffin-embedded sections) - Anti-Matrin 3 antibody (ab84422)

Detection of Human Matrin 3 by Immunofluorescence.  
Sample: FFPE section of human breast carcinoma.  
Antibody: ab84422 used at a dilution of 1/100.  
Detection: Red-fluorescent Alexa Fluor 555 goat anti-rabbit IgG used at a dilution of 1/500.



Immunohistochemistry (Formalin/PFA-fixed paraffin-embedded sections) - Anti-Matrin 3 antibody (ab84422)

Detection of Human Matrin 3 by Immunofluorescence.  
Sample: FFPE section of Human breast carcinoma.  
Antibody: ab84422 used at a dilution of 1/100.  
Detection: Red-fluorescent Alexa Fluor 555 goat anti-rabbit IgG used at a dilution of 1/500.



Immunocytochemistry/ Immunofluorescence - Anti-Matrin 3 antibody (ab84422)

Image courtesy of Leilani Beltran by Abreview.

ab84422 staining Matrin 3 in human U2OS cells by Immunocytochemistry/ Immunofluorescence.

Cells were fixed in paraformaldehyde, permeabilized using 0.5% NP-40, blocked with 1% BSA for 1 hour a room temperature, then incubated with ab84422 at a 1/100 dilution for 1 hour. The secondary antibody used was an Alexa-Fluor 488 conjugate donkey polyclonal, used at a 1/1000 dilution.

**Please note:** All products are "FOR RESEARCH USE ONLY. NOT FOR USE IN DIAGNOSTIC PROCEDURES"

### Our Abpromise to you: Quality guaranteed and expert technical support

---

- Replacement or refund for products not performing as stated on the datasheet
- Valid for 12 months from date of delivery
- Response to your inquiry within 24 hours
- We provide support in Chinese, English, French, German, Japanese and Spanish
- Extensive multi-media technical resources to help you
- We investigate all quality concerns to ensure our products perform to the highest standards

If the product does not perform as described on this datasheet, we will offer a refund or replacement. For full details of the Abpromise, please visit <https://www.abcam.cn/abpromise> or contact our technical team.

### Terms and conditions

---

- Guarantee only valid for products bought direct from Abcam or one of our authorized distributors