


Anti-MATH2/NEUROD6 antibody ab85824

★★★★★ [1 Abreviews](#) [5 References](#) [2 图像](#)

概述

产品名称	Anti-MATH2/NEUROD6抗体
描述	兔多克隆抗体to MATH2/NEUROD6
宿主	Rabbit
特异性	Replenishment batches of ab85824 are tested in WB. Previous batches were additionally validated in ICC/IF. This application is still expected to work and is covered by our Abpromise guarantee.
经测试应用	适用于: WB, ICC/IF
种属反应性	与反应: Mouse, Rat, Human 预测可用于: Cow, Monkey 
免疫原	Synthetic peptide corresponding to Human MATH2/NEUROD6 aa 300 to the C-terminus (C terminal) conjugated to keyhole limpet haemocyanin. (Peptide available as ab95917)
阳性对照	This antibody gave a positive signal in the following tissue lysates: Human brain; Mouse brain; Rat brain, as well as the following whole cell lysates: PC12; U87mg; U373 MG Nuclear. ICC/IF: U-87 MG cell line.
常规说明	<p>The Life Science industry has been in the grips of a reproducibility crisis for a number of years. Abcam is leading the way in addressing this with our range of recombinant monoclonal antibodies and knockout edited cell lines for gold-standard validation. Please check that this product meets your needs before purchasing.</p> <p>If you have any questions, special requirements or concerns, please send us an inquiry and/or contact our Support team ahead of purchase. Recommended alternatives for this product can be found below, along with publications, customer reviews and Q&As</p>

性能

形式	Liquid
存放说明	Shipped at 4°C. Store at +4°C short term (1-2 weeks). Upon delivery aliquot. Store at -20°C or -80°C. Avoid freeze / thaw cycle.
存储溶液	pH: 7.40 Preservative: 0.02% Sodium azide Constituent: PBS

Batches of this product that have a concentration < 1mg/ml may have BSA added as a stabilising agent. If you would like information about the formulation of a specific lot, please contact our scientific support team who will be happy to help.

纯度	Immunogen affinity purified
克隆	多克隆
同种型	IgG

应用

The Abpromise guarantee Abpromise™ 承诺保证使用ab85824于以下的经测试应用

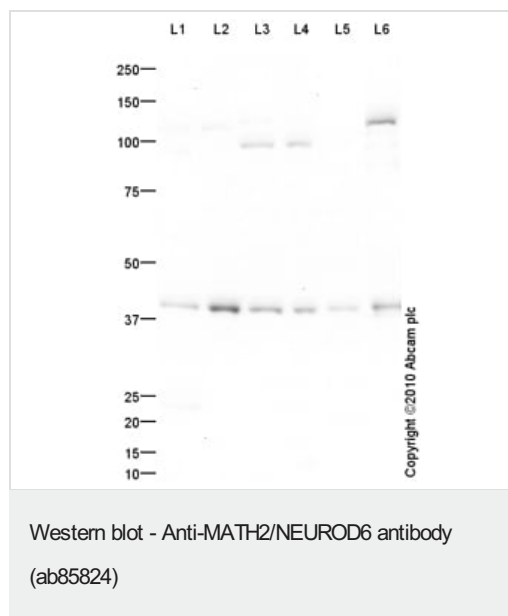
“应用说明”部分 下显示的仅为推荐的起始稀释度;实际最佳的稀释度/浓度应由使用者检定。

应用	Ab评论	说明
WB		Use a concentration of 1 µg/ml. Detects a band of approximately 40 kDa (predicted molecular weight: 38 kDa).
ICC/IF		Use a concentration of 5 µg/ml.

靶标

功能	Activates E box-dependent transcription in collaboration with TCF3/E47. May be a trans-acting factor involved in the development and maintenance of the mammalian nervous system. Transactivates the promoter of its own gene.
序列相似性	Contains 1 basic helix-loop-helix (bHLH) domain.
细胞定位	Nucleus.

图片



All lanes : Anti-MATH2/NEUROD6 antibody (ab85824) at 1 µg/ml

Lane 1 : PC12 (Rat adrenal pheochromocytoma cell line) Whole Cell Lysate

Lane 2 : U-87 MG (Human glioblastoma astrocytoma) Whole Cell Lysate

Lane 3 : Brain (Mouse) Tissue Lysate

Lane 4 : Brain (Rat) Tissue Lysate

Lane 5 : Human brain tissue lysate - total protein ([ab29466](#))

Lane 6 : U373 MG (Human glioblastoma-astrocytoma, epithelial-like cell line) Nuclear Lysate ([ab14902](#))

Lysates/proteins at 10 µg per lane.

Secondary

All lanes : Goat polyclonal to Rabbit IgG - H&L - Pre-Adsorbed (HRP) at 1/3000 dilution

Developed using the ECL technique.

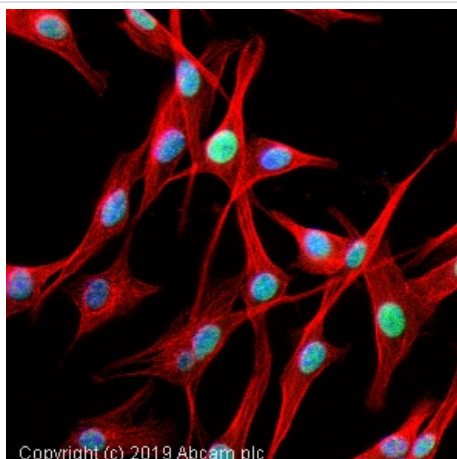
Performed under reducing conditions.

Predicted band size: 38 kDa

Observed band size: 40 kDa

Additional bands at: 100 kDa, 120 kDa. We are unsure as to the identity of these extra bands.

Exposure time: 16 minutes



Immunocytochemistry/ Immunofluorescence - Anti-MATH2/NEUROD6 antibody (ab85824)

ab85824 staining MATH2/NEUROD6 in U-87 MG cells. The cells were fixed with 100% methanol (5 min), permeabilized with 0.1% Triton X-100 for 5 minutes and then blocked with 1% BSA/10% normal goat serum/0.3M glycine in 0.1% PBS-Tween for 1h. The cells were then incubated with the antibody ab85824 at 5µg/ml and **ab7291** (Mouse monoclonal to alpha Tubulin - Loading Control) used at a 1/1000 dilution overnight at +4°C. The secondary antibodies were **ab150081**, Goat Anti-Rabbit IgG H&L (Alexa Fluor® 488) preadsorbed, (pseudo-colored green) and **ab150120**, Goat polyclonal Secondary Antibody to Mouse IgG - H&L (Alexa Fluor® 594) preadsorbed, (colored red), both used at a 1/1000 dilution for 1 hour at room temperature. DAPI was used to stain the cell nuclei (colored blue) at a concentration of 1.43 µM for 1 hour at room temperature.

Please note: All products are "FOR RESEARCH USE ONLY. NOT FOR USE IN DIAGNOSTIC PROCEDURES"

Our Abpromise to you: Quality guaranteed and expert technical support

- Replacement or refund for products not performing as stated on the datasheet
- Valid for 12 months from date of delivery
- Response to your inquiry within 24 hours
- We provide support in Chinese, English, French, German, Japanese and Spanish
- Extensive multi-media technical resources to help you
- We investigate all quality concerns to ensure our products perform to the highest standards

If the product does not perform as described on this datasheet, we will offer a refund or replacement. For full details of the Abpromise, please visit <https://www.abcam.cn/abpromise> or contact our technical team.

Terms and conditions

- Guarantee only valid for products bought direct from Abcam or one of our authorized distributors