


Anti-Mast Cell Chymase antibody [CC1] ab2377

★★★★★ **3 Abreviews** **30 References** **2 图像**

概述

产品名称	Anti-Mast Cell Chymase抗体[CC1]
描述	小鼠单克隆抗体[CC1] to Mast Cell Chymase
宿主	Mouse
经测试应用	适用于: IHC-P 不适用于: WB
种属反应性	与反应: Human 预测可用于: Rat, Pig 
免疫原	Full length native protein (purified). This information is proprietary to Abcam and/or its suppliers.
阳性对照	Tonsil. IHC-P: FFPE human tonsil tissue sections.
常规说明	<p>Mast cells contain a number of preformed chemicals mediators such as histamine, chymase, carboxypeptidase and proteolytic tryptase. Human Mast Cell Chymase is considered to be an important marker of mast cells as well as an important mediator of inflammation.</p> <p>This antibody clone is manufactured by Abcam. If you require a custom buffer formulation or conjugation for your experiments, please contact orders@abcam.com.</p> <p>The Life Science industry has been in the grips of a reproducibility crisis for a number of years. Abcam is leading the way in addressing this with our range of recombinant monoclonal antibodies and knockout edited cell lines for gold-standard validation. Please check that this product meets your needs before purchasing.</p> <p>If you have any questions, special requirements or concerns, please send us an inquiry and/or contact our Support team ahead of purchase. Recommended alternatives for this product can be found below, along with publications, customer reviews and Q&As</p>

性能

形式	Liquid
存放说明	Shipped at 4°C. Store at +4°C short term (1-2 weeks). Store at -20°C or -80°C. Avoid freeze / thaw cycle.
存储溶液	<p>pH: 7.40</p> <p>Preservative: 0.02% Sodium azide</p> <p>Constituents: PBS, 6.97% L-Arginine</p>

纯度	Protein G purified
Primary antibody说明	Mast cells contain a number of preformed chemicals mediators such as histamine, chymase, carboxypeptidase and proteolytic tryptase. Human Mast Cell Chymase is considered to be an important marker of mast cells as well as an important mediator of inflammation.
克隆	单克隆
克隆编号	CC1
骨髓瘤	unknown
同种型	IgG1
轻链类型	unknown

应用

The Abpromise guarantee Abpromise™承诺保证使用ab2377于以下的经测试应用

“应用说明”部分 下显示的仅为推荐的起始稀释度;实际最佳的稀释度/浓度应由使用者检定。

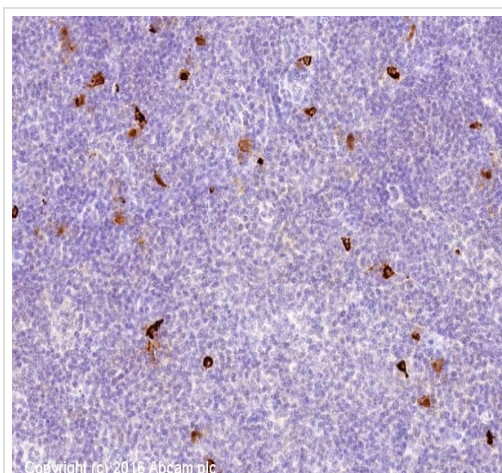
应用	Ab评论	说明
IHC-P	<div> ★ ★ ★ ★ ★ (2) </div>	Use a concentration of 0.2 µg/ml. Perform heat mediated antigen retrieval with citrate buffer pH 6 before commencing with IHC staining protocol.

应用说明 Is unsuitable for WB.

靶标

功能	Major secreted protease of mast cells with suspected roles in vasoactive peptide generation, extracellular matrix degradation, and regulation of gland secretion.
组织特异性	Mast cells in lung, heart, skin and placenta. Expressed in both normal skin and in urticaria pigmentosa lesions.
序列相似性	Belongs to the peptidase S1 family. Granzyme subfamily. Contains 1 peptidase S1 domain.
细胞定位	Secreted. Cytoplasmic granule. Mast cell granules.

图片

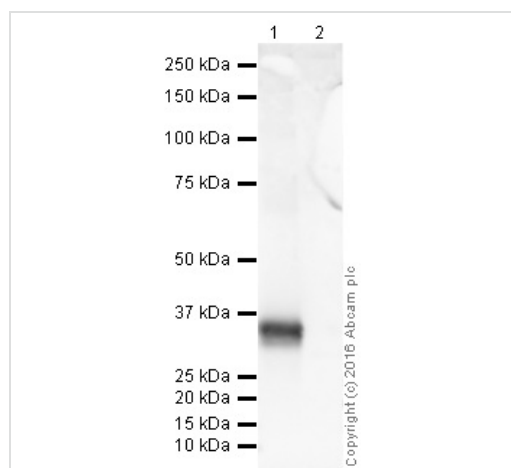


Immunohistochemistry (Formalin/PFA-fixed paraffin-embedded sections) - Anti-Mast Cell Chymase antibody [CC1] (ab2377)

IHC image of Mast Cell Chymase staining in human tonsil formalin fixed paraffin embedded tissue section*, performed on a Leica Bond™ system using the standard protocol F. The section was pre-treated using heat mediated antigen retrieval with sodium citrate buffer (pH6, epitope retrieval solution 1) for 20 mins. The section was then incubated with ab2377, 0.2µg/ml, for 15 mins at room temperature and detected using an HRP conjugated compact polymer system. DAB was used as the chromogen. The section was then counterstained with haematoxylin and mounted with DPX.

For other IHC staining systems (automated and non-automated) customers should optimize variable parameters such as antigen retrieval conditions, primary antibody concentration and antibody incubation times.

**Tissue obtained from the Human Research Tissue Bank, supported by the NIHR Cambridge Biomedical Research Centre*



Western blot - Anti-Mast Cell Chymase antibody [CC1] (ab2377)

All lanes : Anti-Mast Cell Chymase antibody [CC1] (ab2377) at 1 µg/ml

Lane 1 : Recombinant Human Chymase Protein

Lane 2 : Recombinant Human Mast Cell Tryptase protein (denatured) ([ab134529](#))

Lysates/proteins at 0.1 µg per lane.

Secondary

All lanes : Goat polyclonal to Mouse IgG - H&L - Pre-Adsorbed (HRP) at 1/5000 dilution

Developed using the ECL technique.

Performed under reducing conditions.

Predicted band size: 27 kDa

Observed band size: 35 kDa

Exposure time: 30 seconds

Ab2377 recognises recombinant human mast cell chymase.
However, endogenous protein is not detected in WB due to low
expression, therefore we do not guarantee this antibody in WB.

Please note: All products are "FOR RESEARCH USE ONLY. NOT FOR USE IN DIAGNOSTIC PROCEDURES"

Our Abpromise to you: Quality guaranteed and expert technical support

- Replacement or refund for products not performing as stated on the datasheet
- Valid for 12 months from date of delivery
- Response to your inquiry within 24 hours
- We provide support in Chinese, English, French, German, Japanese and Spanish
- Extensive multi-media technical resources to help you
- We investigate all quality concerns to ensure our products perform to the highest standards

If the product does not perform as described on this datasheet, we will offer a refund or replacement. For full details of the Abpromise, please visit <https://www.abcam.cn/abpromise> or contact our technical team.

Terms and conditions

- Guarantee only valid for products bought direct from Abcam or one of our authorized distributors