

Anti-Mast Cell Chymase antibody ab111239

★★★★★ [1 Abreviews](#) [7 References](#) [2 图像](#)

概述

产品名称	Anti-Mast Cell Chymase抗体
描述	山羊多克隆抗体 to Mast Cell Chymase
宿主	Goat
经测试应用	适用于: IHC-P
种属反应性	与反应: Human
免疫原	Synthetic peptide corresponding to Human Mast Cell Chymase aa 50-150 (internal sequence) (Cysteine residue). Run BLAST with Expasy Run BLAST with NCBI
阳性对照	Human testis and tonsil tissue
常规说明	<p>The Life Science industry has been in the grips of a reproducibility crisis for a number of years. Abcam is leading the way in addressing this with our range of recombinant monoclonal antibodies and knockout edited cell lines for gold-standard validation. Please check that this product meets your needs before purchasing.</p> <p>If you have any questions, special requirements or concerns, please send us an inquiry and/or contact our Support team ahead of purchase. Recommended alternatives for this product can be found below, along with publications, customer reviews and Q&As</p>

性能

形式	Liquid
存放说明	Shipped at 4°C. Store at +4°C short term (1-2 weeks). Upon delivery aliquot. Store at -20°C long term.
存储溶液	pH: 7.30 Preservative: 0.02% Sodium azide Constituents: Tris buffered saline, 0.5% BSA
纯度	Immunogen affinity purified
克隆	多克隆
同种型	IgG

应用

The Abpromise guarantee **Abpromise™**承诺保证使用ab111239于以下的经测试应用

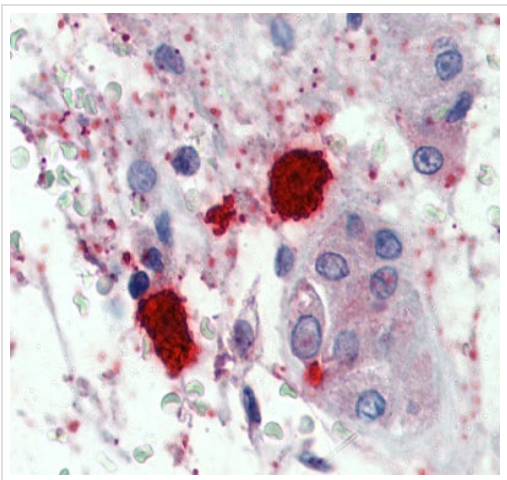
“应用说明”部分 下显示的仅为推荐的起始稀释度;实际最佳的稀释度/浓度应由使用者检定。

应用	Ab评论	说明
IHC-P		Use a concentration of 1.5 - 3.75 µg/ml. Perform heat mediated antigen retrieval with citrate buffer pH 6 before commencing with IHC staining protocol.

靶标

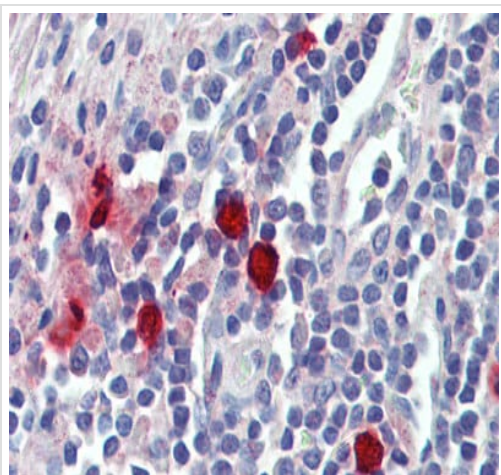
功能	Major secreted protease of mast cells with suspected roles in vasoactive peptide generation, extracellular matrix degradation, and regulation of gland secretion.
组织特异性	Mast cells in lung, heart, skin and placenta. Expressed in both normal skin and in urticaria pigmentosa lesions.
序列相似性	Belongs to the peptidase S1 family. Granzyme subfamily. Contains 1 peptidase S1 domain.
细胞定位	Secreted. Cytoplasmic granule. Mast cell granules.

图片



Immunohistochemistry (Formalin/PFA-fixed paraffin-embedded sections) - Anti-Mast Cell Chymase antibody (ab111239)

ab111239, at 1.5 µg/ml, staining Mast Cell Chymase in formalin fixed, paraffin embedded Human testis tissue by Immunohistochemistry. Biotinylated secondary antibody, followed by alkaline phosphatase streptavidin and chromogen were used to develop staining.



Immunohistochemistry (Formalin/PFA-fixed paraffin-embedded sections) - Anti-Mast Cell Chymase antibody (ab111239)

ab111239, at 1.5 µg/ml, staining Mast Cell Chymase in formalin fixed, paraffin embedded Human tonsil tissue by Immunohistochemistry. Biotinylated secondary antibody, followed by alkaline phosphatase streptavidin and chromogen were used to develop staining.

Please note: All products are "FOR RESEARCH USE ONLY. NOT FOR USE IN DIAGNOSTIC PROCEDURES"

Our Abpromise to you: Quality guaranteed and expert technical support

- Replacement or refund for products not performing as stated on the datasheet
- Valid for 12 months from date of delivery
- Response to your inquiry within 24 hours
- We provide support in Chinese, English, French, German, Japanese and Spanish
- Extensive multi-media technical resources to help you
- We investigate all quality concerns to ensure our products perform to the highest standards

If the product does not perform as described on this datasheet, we will offer a refund or replacement. For full details of the Abpromise, please visit <https://www.abcam.cn/abpromise> or contact our technical team.

Terms and conditions

- Guarantee only valid for products bought direct from Abcam or one of our authorized distributors