

Anti-MASS1 antibody ab115621

2 图像

概述

产品名称	Anti-MASS1抗体
描述	兔多克隆抗体to MASS1
宿主	Rabbit
经测试应用	适用于: IHC-P
种属反应性	与反应: Human
免疫原	Synthetic peptide derived from the N terminal extracellular domain of Human MASS1.
阳性对照	Human Brain cortex and Lung (respiratory epithelium) tissues.
常规说明	<p>The Life Science industry has been in the grips of a reproducibility crisis for a number of years. Abcam is leading the way in addressing this with our range of recombinant monoclonal antibodies and knockout edited cell lines for gold-standard validation. Please check that this product meets your needs before purchasing.</p> <p>If you have any questions, special requirements or concerns, please send us an inquiry and/or contact our Support team ahead of purchase. Recommended alternatives for this product can be found below, along with publications, customer reviews and Q&As</p>

性能

形式	Liquid
存放说明	Shipped at 4°C. Store at -80°C.
存储溶液	pH: 7.4 Preservative: 0.1% Sodium azide Constituent: 99% PBS
纯度	Protein A purified
克隆	多克隆
同种型	IgG

应用

The Abpromise guarantee **Abpromise™**承诺保证使用ab115621于以下的经测试应用

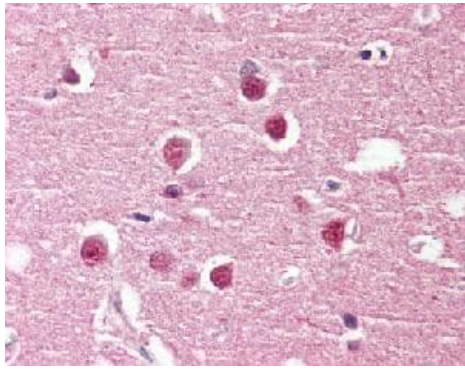
“应用说明”部分 下显示的仅为推荐的起始稀释度;实际最佳的稀释度/浓度应由使用者检定。

应用	Ab评论	说明
IHC-P		Use a concentration of 5 - 10 µg/ml. Formalin-fixed Paraffin-embedded tissues requires pretreatment with Proteinase K.

靶标

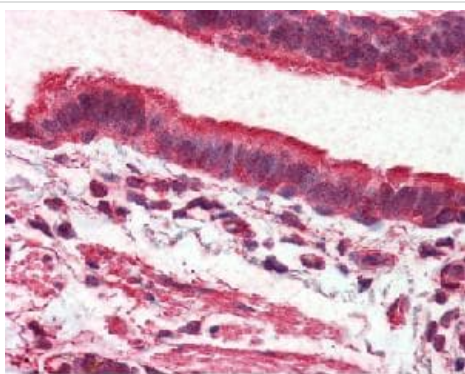
功能	Receptor that may have an important role in the development of the central nervous system.
组织特异性	Expressed at low levels in adult tissues.
疾病相关	<p>Defects in GPR98 are the cause of Usher syndrome type 2C (USH2C) [MIM:605472]. USH is a genetically heterogeneous condition characterized by the association of retinitis pigmentosa with sensorineural deafness. Age at onset and differences in auditory and vestibular function distinguish Usher syndrome type 1 (USH1), Usher syndrome type 2 (USH2) and Usher syndrome type 3 (USH3). USH2 is characterized by congenital mild hearing impairment with normal vestibular responses.</p> <p>Defects in GPR98 may be a cause of familial febrile convulsions type 4 (FEB4) [MIM:604352]; also known as familial febrile seizures 4. Febrile convulsions are seizures associated with febrile episodes in childhood without any evidence of intracranial infection or defined pathologic or traumatic cause. It is a common condition, affecting 2-5% of children aged 3 months to 5 years. The majority are simple febrile seizures (generally defined as generalized onset, single seizures with a duration of less than 30 minutes). Complex febrile seizures are characterized by focal onset, duration greater than 30 minutes, and/or more than one seizure in a 24 hour period. The likelihood of developing epilepsy following simple febrile seizures is low. Complex febrile seizures are associated with a moderately increased incidence of epilepsy.</p>
序列相似性	<p>Belongs to the G-protein coupled receptor 2 family. LN-TM7 subfamily.</p> <p>Contains 35 Calx-beta domains.</p> <p>Contains 6 EAR repeats.</p> <p>Contains 1 GPS domain.</p>
发展阶段	Isoform 1 is 4 times more abundant than isoform 2 in most tissues tested, despite wide variations in absolute levels of expression. Isoform 3 is expressed at about 1.5 times isoform 1 levels in most tissues examined. In fetal testis, isoform 3 is expressed almost exclusively.
细胞定位	Cell membrane.

图片



Immunohistochemistry (Formalin/PFA-fixed paraffin-embedded sections) - Anti-MASS1 antibody (ab115621)

ab115621, at 5-10 μ g/ml, staining MASS1 in Formalin-fixed, Paraffin-embedded Human Brain cortex tissue by Immunohistochemistry.



Immunohistochemistry (Formalin/PFA-fixed paraffin-embedded sections) - Anti-MASS1 antibody (ab115621)

ab115621, at 5-10 μ g/ml, staining MASS1 in Formalin-fixed, Paraffin-embedded Human lung, respiratory epithelium tissue by Immunohistochemistry.

Please note: All products are "FOR RESEARCH USE ONLY. NOT FOR USE IN DIAGNOSTIC PROCEDURES"

Our Abpromise to you: Quality guaranteed and expert technical support

- Replacement or refund for products not performing as stated on the datasheet
- Valid for 12 months from date of delivery
- Response to your inquiry within 24 hours

- We provide support in Chinese, English, French, German, Japanese and Spanish
- Extensive multi-media technical resources to help you
- We investigate all quality concerns to ensure our products perform to the highest standards

If the product does not perform as described on this datasheet, we will offer a refund or replacement. For full details of the Abpromise, please visit <https://www.abcam.cn/abpromise> or contact our technical team.

Terms and conditions

- Guarantee only valid for products bought direct from Abcam or one of our authorized distributors